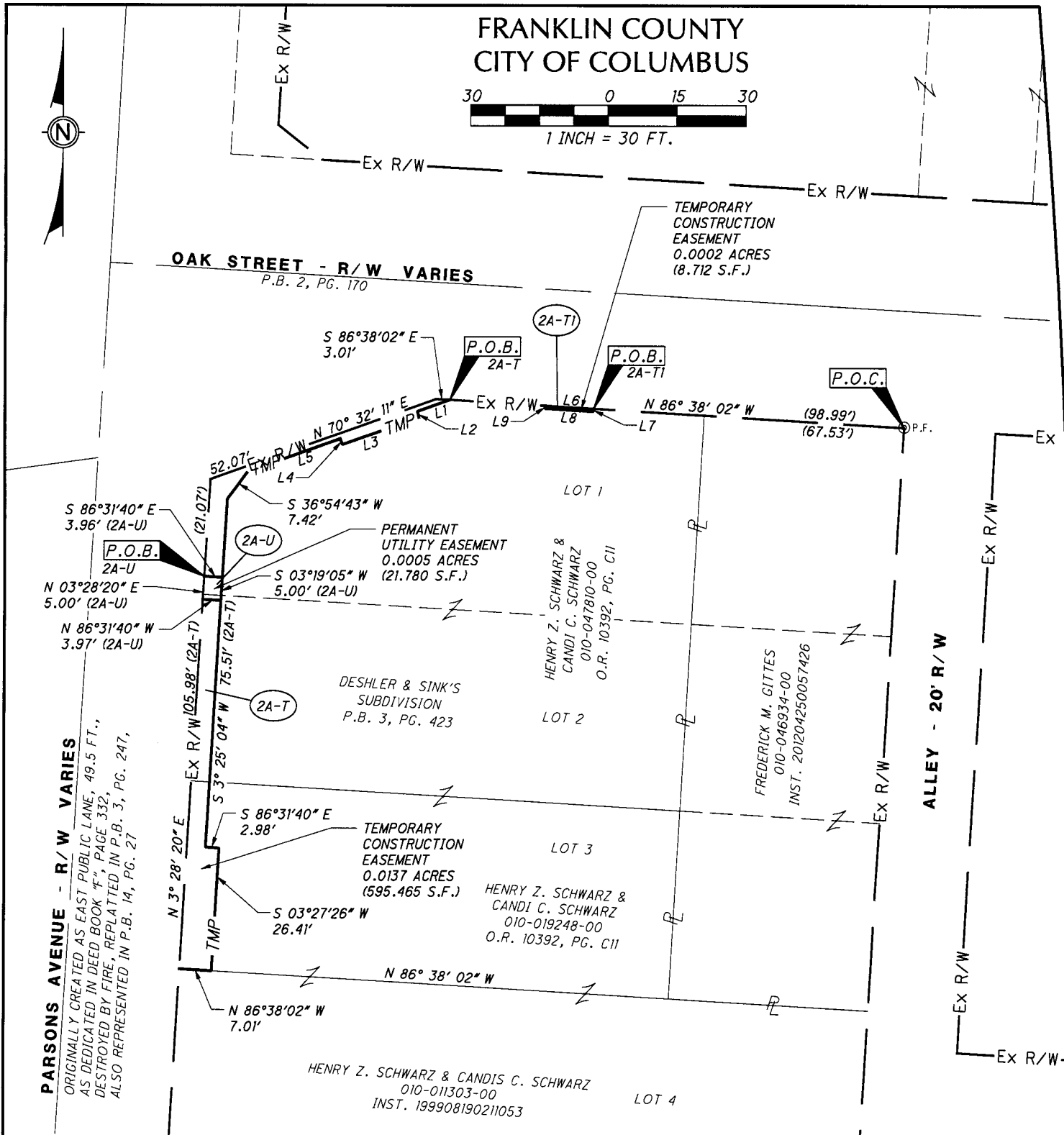
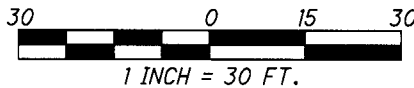




# PERMANENT UTILITY EASEMENT 2A-U & TEMPORARY CONSTRUCTION EASEMENTS 2A-T & 2A-T1

FRANKLIN COUNTY  
CITY OF COLUMBUS



**BASIS OF BEARINGS:**

BEARINGS ARE BASED ON THE BEARING BETWEEN FRANKLIN COUNTY ENGINEER'S MONUMENTS "FRANK43" AND "FRANK143" BEING S 87°56'15" E, AS MEASURED ON GRID NORTH, OF THE OHIO STATE PLANE COORDINATE SYSTEM, SOUTH ZONE (2011).

**LEGEND:**

- ⊙ P.F. 3/4" PIPE (FOUND)
- P.O.C. POINT OF COMMENCEMENT
- P.O.B. POINT OF BEGINNING

**PERTINENT DOCUMENTS USED:**

DESHLER & SINK'S SUBDIVISION - P.B. 3, PG. 423  
INST. 19990190211053  
INST. 201204250057426  
O.R. 10392, PG. C11

**LINE TABLE**

LINE	BEARING	DISTANCE
L1	S 70°33'40" W	7.64'
L2	S 19°12'31" E	1.32'
L3	S 70°32'11" W	17.62'
L4	N 19°12'31" W	1.32'
L5	S 70°33'40" W	21.34'
L6	S 86°38'02" E	10.66'
L7	S 03°21'58" W	0.60'
L8	N 86°38'02" W	10.66'
L9	N 03°21'58" E	0.60'

**RECEIVED**

NOV 10 2015

Franklin County Engineer  
Dean C. Ringle, P.E., P.S.



*Steven L. Mullaney*  
STEVEN L. MULLANEY, P.S. 7900

11/9/2015  
DATE