

F-9-E



Evans, Mechwart, Hambleton & Tilton, Inc.
Engineers • Surveyors • Planners • Scientists
5500 New Albany Road, Columbus, OH 43054
Phone: 614.775.4500 Toll Free: 888.775.3648
emht.com

SURVEY OF ACREAGE PARCEL

SECTION 14, TOWNSHIP 5, RANGE 22

REFUGEE LANDS

CITY OF COLUMBUS, COUNTY OF FRANKLIN, STATE OF OHIO

Date: December 29, 2015

Job No. 2015-0904

Scale: 1" = 40'

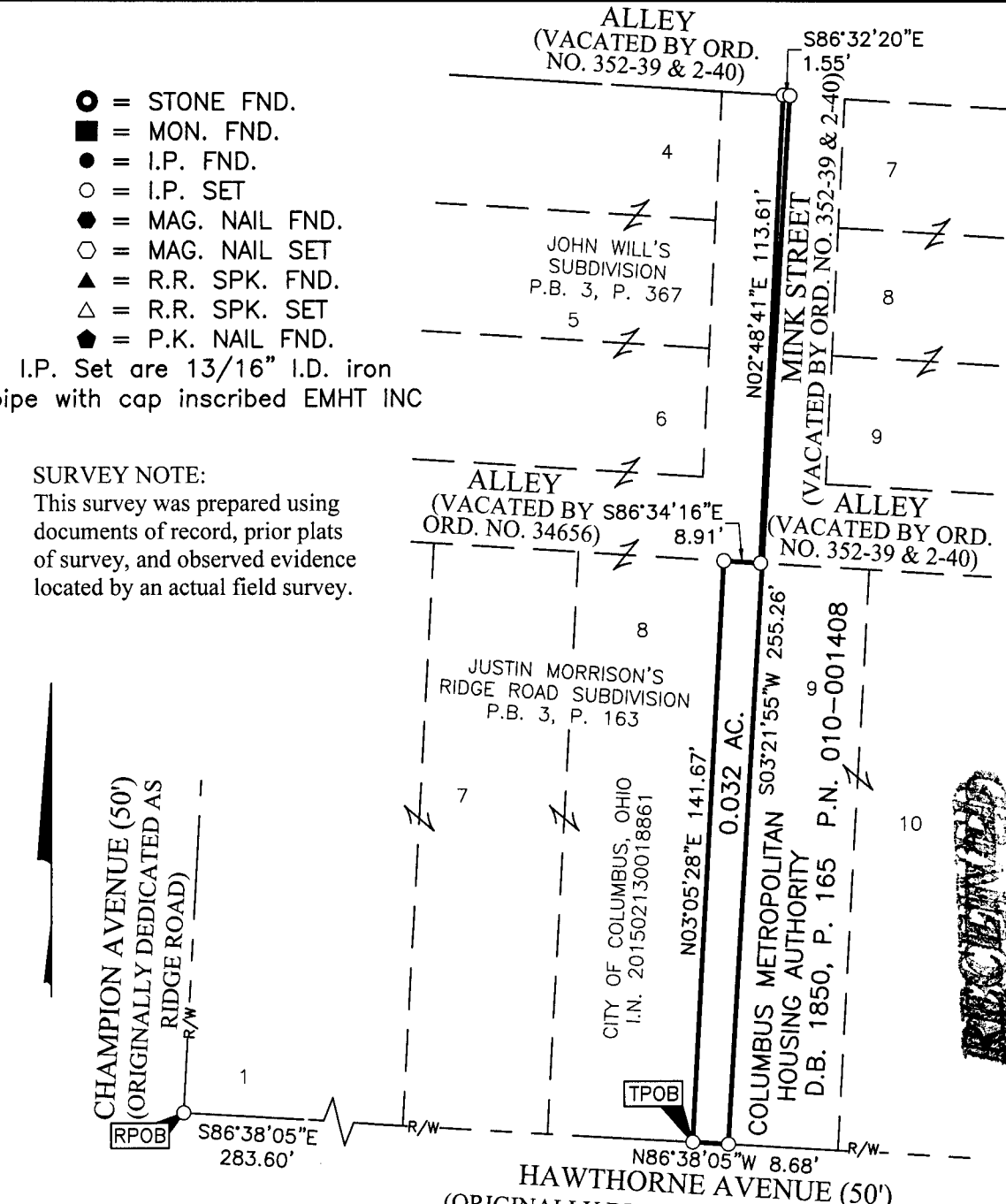
- = STONE FND.
- = MON. FND.
- = I.P. FND.
- = I.P. SET
- ◆ = MAG. NAIL FND.
- = MAG. NAIL SET
- ▲ = R.R. SPK. FND.
- △ = R.R. SPK. SET
- ◆ = P.K. NAIL FND.

I.P. Set are 13/16" I.D. iron pipe with cap inscribed EMHT INC

SURVEY NOTE:

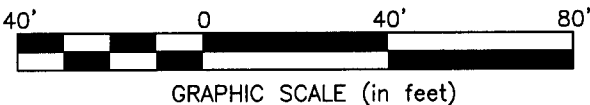
This survey was prepared using documents of record, prior plats of survey, and observed evidence located by an actual field survey.

U:\20150904\DWG\04SHEETS\BOUNDARY\20150904-VS-BNDY-31.DWG plotted by MARGUS, MARCUS on 12/29/2015 9:07:26 AM last saved by MMAGERS on 12/29/2015 8:51:36 AM



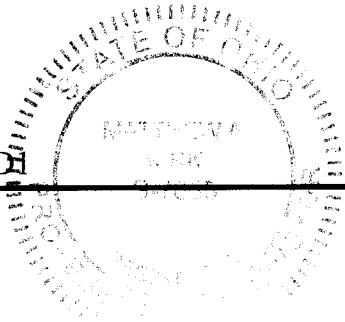
BASIS OF BEARINGS:

The Bearings shown hereon are based on the Ohio State Plane Coordinate System South Zone as per NAD83 (NSRS2007). Said bearings originated from a field traverse which was tied (referenced) to said coordinate system by GPS observations of Franklin County Engineering Department monuments "FRANK 65" and "FRANK 165". A bearing of North 03° 03' 34" East, for the easterly right-of-way line of Champion Avenue is designated the basis of bearings for this survey.



JAN 14 2016

Franklin County Engineer
Dean C. Ringle, P.E., P.S.



By Matthew A. Kirk
Matthew A. Kirk
Professional Surveyor No. 7865

29 DEC 15
Date

31-WD