

F-9-E



Evans, Mechwart, Hambleton & Tilton, Inc.  
Engineers • Surveyors • Planners • Scientists  
5500 New Albany Road, Columbus, OH 43054  
Phone: 614.775.4500 Toll Free: 888.775.3648  
emht.com

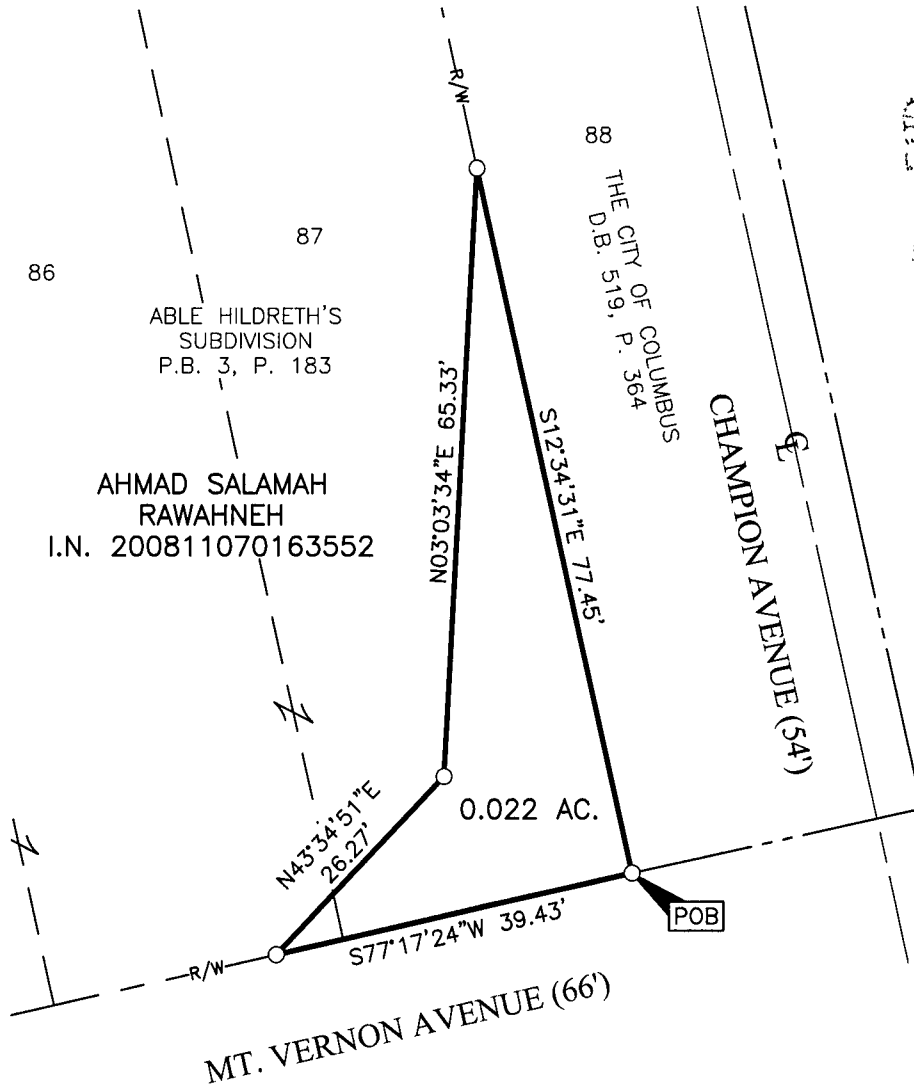
# SURVEY OF ACREAGE PARCEL

SECTION 14, TOWNSHIP 5, RANGE 22  
REFUGEE LANDS  
CITY OF COLUMBUS, COUNTY OF FRANKLIN, STATE OF OHIO

Date: December 29, 2015

Job No. 2015-0904

Scale: 1" = 20'



RECEIVED  
JAN 07 2016

Franklin County Engineer  
Dean C. Ringlo, P.E., P.S.

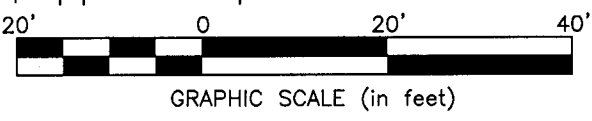
JAN 07 2016

Franklin County Engineer  
Dean C. Ringlo, P.E., P.S.

I:\20150904\DWG\04SHEETS\BOUNDARY\20150904-VS-BNDY-30.DWG plotted by MAGERS, MARCUS on 12/29/2015 9:06:57 AM last saved by MMAGERS on 12/29/2015 8:35:13 AM

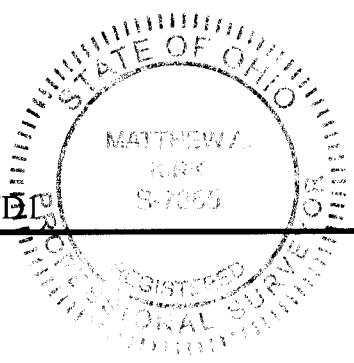
- = STONE FND.
- = MON. FND.
- = I.P. FND.
- = I.P. SET
- ◆ = MAG. NAIL FND.
- = MAG. NAIL SET
- ▲ = R.R. SPK. FND.
- △ = R.R. SPK. SET
- ◆ = P.K. NAIL FND.

I.P. Set are 13/16" I.D. iron pipe with cap inscribed EMHT INC



**BASIS OF BEARINGS:**  
The Bearings shown hereon are based on the Ohio State Plane Coordinate System South Zone as per NAD83 (NSRS2007). Said bearings originated from a field traverse which was tied (referenced) to said coordinate system by GPS observations of Franklin County Engineering Department monuments "FRANK 65" and "FRANK 165". A bearing of North 03° 03' 34" East, for the easterly right-of-way line of Champion Avenue is designated the basis of bearings for this survey.

**SURVEY NOTE:**  
This survey was prepared using documents of record, prior plats of survey, and observed evidence located by an actual field survey.



By Matthew A. Kirk  
Matthew A. Kirk  
Professional Surveyor No. 7865

29 DEC 15  
Date

30-WEL