

F-9-E



Evans, Mechwart, Hambleton & Tilton, Inc.  
Engineers • Surveyors • Planners • Scientists  
5500 New Albany Road, Columbus, OH 43054  
Phone: 614.775.4300 Toll Free: 888.775.3648  
emht.com

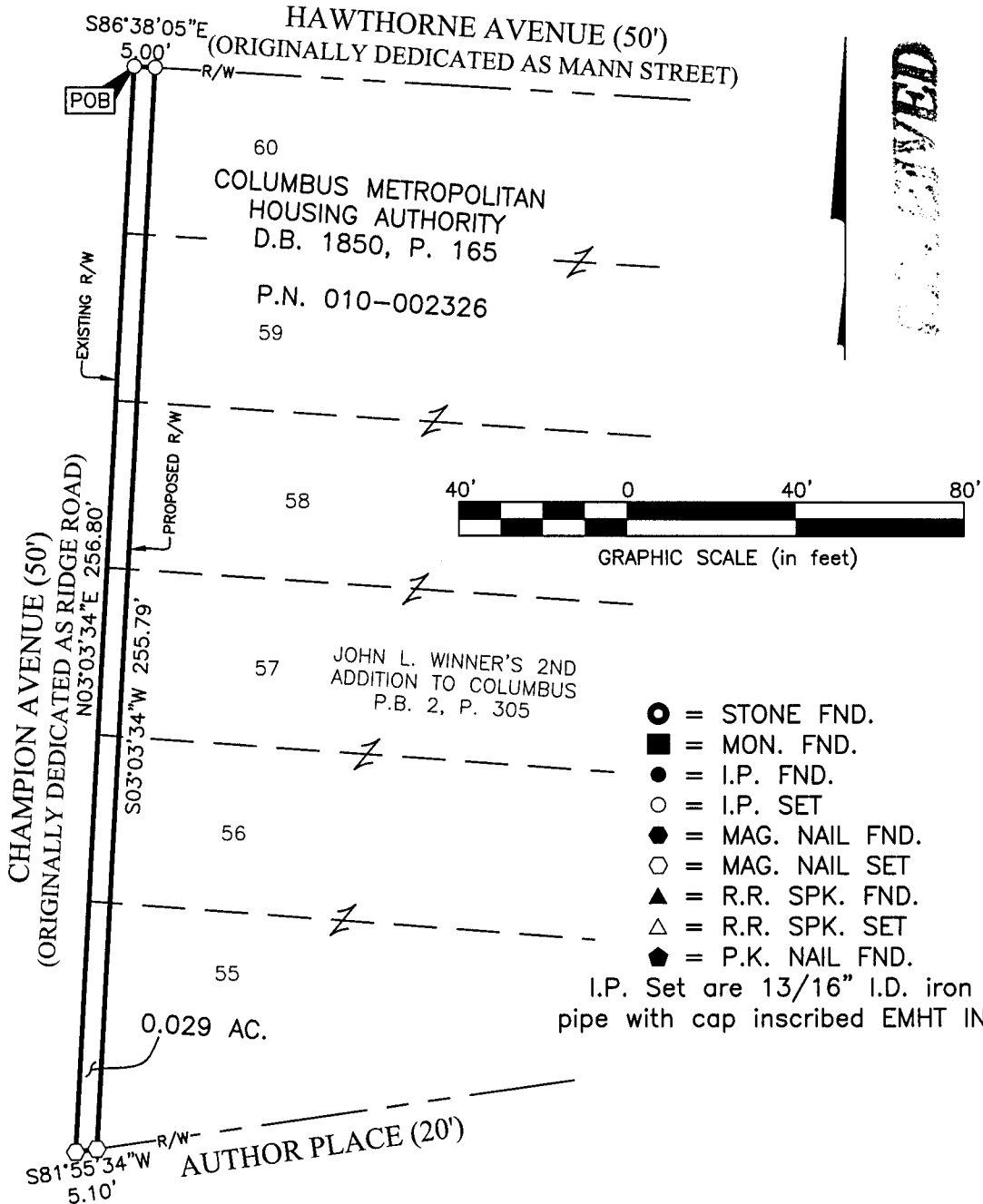
# SURVEY OF ACREAGE PARCEL

SECTION 14, TOWNSHIP 5, RANGE 22  
REFUGEE LANDS  
CITY OF COLUMBUS, COUNTY OF FRANKLIN, STATE OF OHIO

Date: December 29, 2015

Job No. 2015-0904

Scale: 1" = 40'



RECEIVED

JAN 0 / 2016

Franklin County Engineer  
Dean C. Ringle, P.E., P.S.

- = STONE FND.
- = MON. FND.
- = I.P. FND.
- = I.P. SET
- = MAG. NAIL FND.
- = MAG. NAIL SET
- ▲ = R.R. SPK. FND.
- △ = R.R. SPK. SET
- ◆ = P.K. NAIL FND.

I.P. Set are 13/16" I.D. iron pipe with cap inscribed EMHT INC

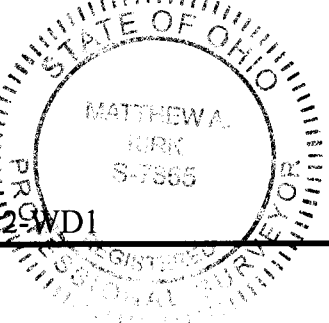
### BASIS OF BEARINGS:

The Bearings shown hereon are based on the Ohio State Plane Coordinate System South Zone as per NAD83 (NSRS2007). Said bearings originated from a field traverse which was tied (referenced) to said coordinate system by GPS observations of Franklin County Engineering Department monuments "FRANK 65" and "FRANK 165". A bearing of North 03° 03' 34" East, for the easterly right-of-way line of Champion Avenue is designated the basis of bearings for this survey.

### SURVEY NOTE:

This survey was prepared using documents of record, prior plats of survey, and observed evidence located by an actual field survey.

U:\20150904\DWG\04SHEETS\BOUNDARY\20150904-VS-BNDY-22.DWG plotted by KIRK, MATTHEW on 12/29/2015 1:07:52 PM last saved by KIRK, MATTHEW on 12/29/2015 1:07:36 PM



By Matthew A. Kirk Date 29 DEC 15  
Matthew A. Kirk  
Professional Surveyor No. 7865