



Evans, Mechwart, Hambleton & Tilton, Inc.
Engineers • Surveyors • Planners • Scientists
5500 New Albany Road, Columbus, OH 43054
Phone: 614.775.4500 Toll Free: 888.775.3648
emht.com

SURVEY OF ACREAGE PARCEL

SECTION 14, TOWNSHIP 5, RANGE 22

REFUGEE LANDS

CITY OF COLUMBUS, COUNTY OF FRANKLIN, STATE OF OHIO

Date: January 12, 2016

Job No. 2015-0904

Scale: 1" = 20'

- = I.P. FND.
- = I.P. SET
- = MAG. NAIL FND.
- = MAG. NAIL SET

I.P. Set are 13/16" I.D. iron pipe with cap inscribed EMHT INC

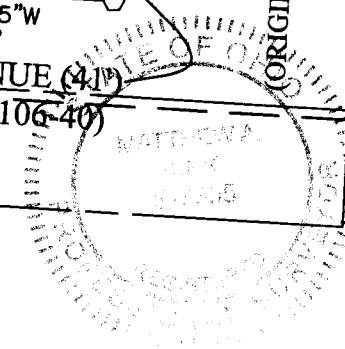
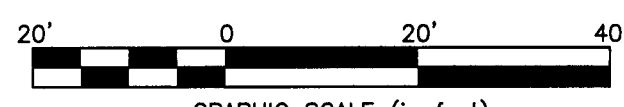
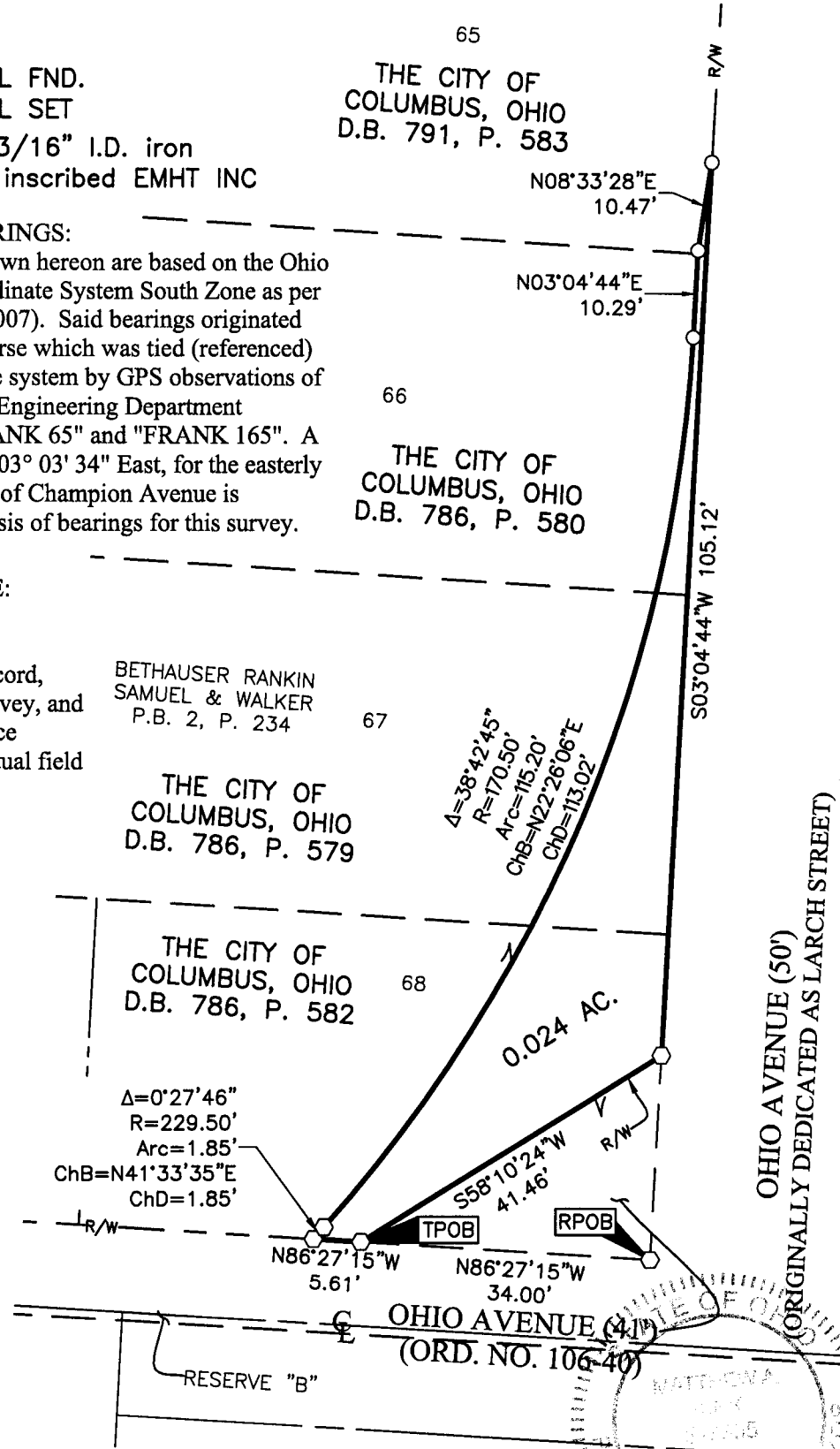
BASIS OF BEARINGS:

The Bearings shown hereon are based on the Ohio State Plane Coordinate System South Zone as per NAD83 (NSRS2007). Said bearings originated from a field traverse which was tied (referenced) to said coordinate system by GPS observations of Franklin County Engineering Department monuments "FRANK 65" and "FRANK 165". A bearing of North 03° 03' 34" East, for the easterly right-of-way line of Champion Avenue is designated the basis of bearings for this survey.

SURVEY NOTE:

This survey was prepared using documents of record, prior plats of survey, and observed evidence located by an actual field survey.

J:\20150904\DWG\04-SHEETS\BOUNDARY\20150904-VS-BNDY-6.DWG plotted by MAGERS, MARCUS on 1/12/2016 1:02:16 PM last saved by MMAGERS on 12/17/2015 12:54:08 PM



RECEIVED

By Matthew A. Kirk 12 JAN 16
 Matthew A. Kirk
 Professional Surveyor No. 7865
 Date

6-WD1

JAN 14 2016

Franklin County Engineer
Dean C. Ringle, P.E., P.S.