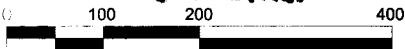


RECEIVED

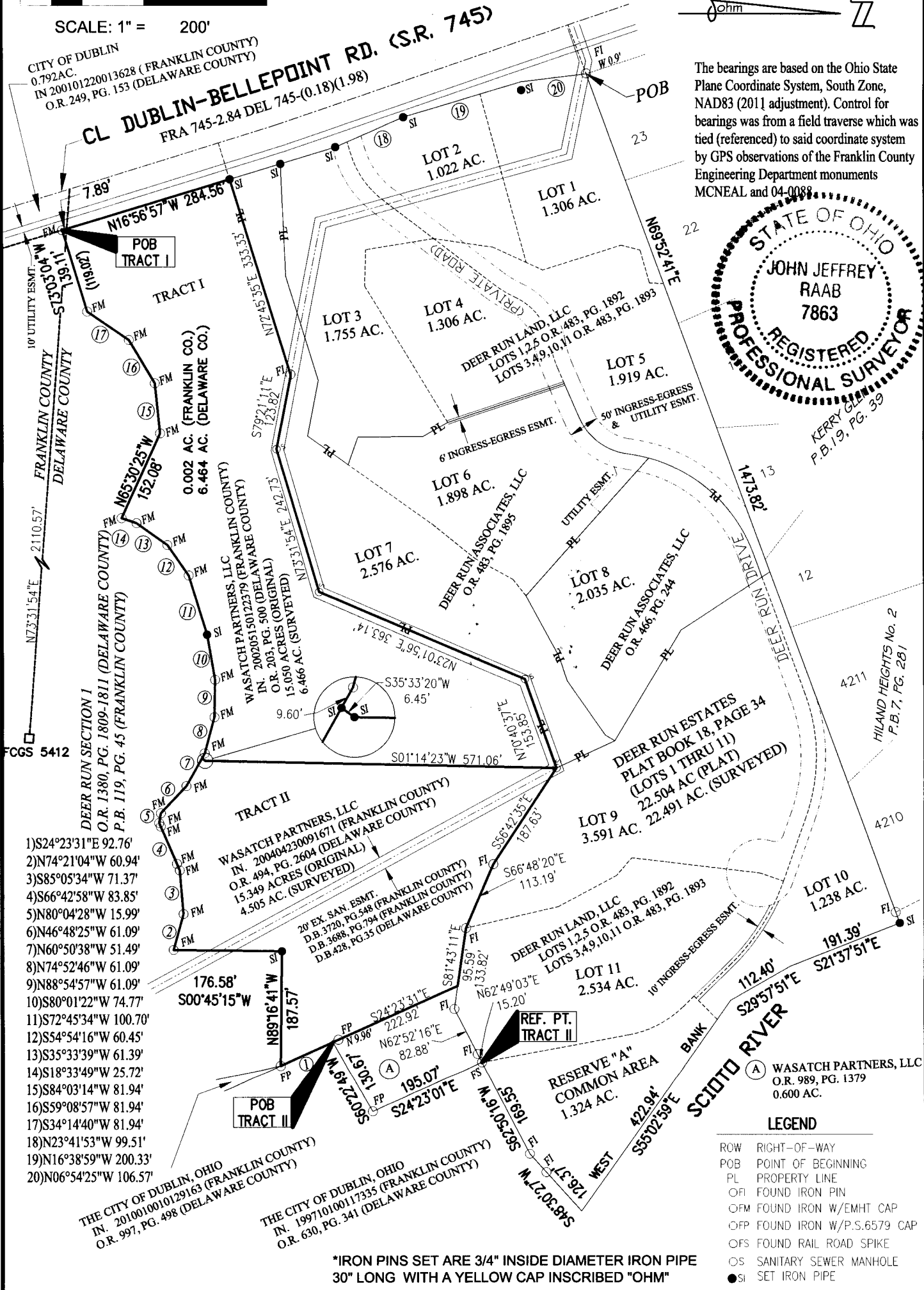
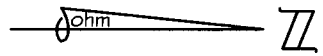
A-1-B.C

FEB 03 2016

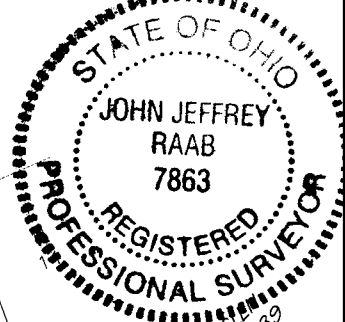
Franklin County Engineer STATE OF OHIO, DELAWARE & FRANKLIN COUNTIES
Duane C. Pligio, R.E., P.S. CITY OF DUBLIN, VMS 2545



SCALE: 1" = 200'



The bearings are based on the Ohio State Plane Coordinate System, South Zone, NAD83 (2011 adjustment). Control for bearings was from a field traverse which was tied (referenced) to said coordinate system by GPS observations of the Franklin County Engineering Department monuments MCNEAL and 04-0088.



- 1) S24°23'31"E 92.76'
- 2) N74°21'04"W 60.94'
- 3) S85°05'34"W 71.37'
- 4) S66°42'58"W 83.85'
- 5) N80°04'28"W 15.99'
- 6) N46°48'25"W 61.09'
- 7) N60°50'38"W 51.49'
- 8) N74°52'46"W 61.09'
- 9) N88°54'57"W 61.09'
- 10) S80°01'22"W 74.77'
- 11) S72°45'34"W 100.70'
- 12) S54°54'16"W 60.45'
- 13) S35°33'39"W 61.39'
- 14) S18°33'49"W 25.72'
- 15) S84°03'14"W 81.94'
- 16) S59°08'57"W 81.94'
- 17) S34°14'40"W 81.94'
- 18) N23°41'53"W 99.51'
- 19) N16°38'59"W 200.33'
- 20) N06°54'25"W 106.57'

LEGEND

- ROW RIGHT-OF-WAY
- POB POINT OF BEGINNING
- PL PROPERTY LINE
- FI FOUND IRON PIN
- OFM FOUND IRON W/EMHT CAP
- OFF FOUND IRON W/P.S.6579 CAP
- OFS FOUND RAIL ROAD SPIKE
- OS SANITARY SEWER MANHOLE
- SI SET IRON PIPE

*IRON PINS SET ARE 3/4" INSIDE DIAMETER IRON PIPE 30" LONG WITH A YELLOW CAP INSCRIBED "OHM"

I hereby certify this plat was prepared by using measurements obtained by an actual field survey conducted under my direct supervision in October 28, 2015

John J. Raab
JOHN J. RAAB, P.S. 7863



580 NORTH FOURTH STREET
SUITE 610
COLUMBUS, OH 43215
p (614) 418-9921

DATE: 10-28-15	SHEET: 1 OF 1	JOB NO.: 6481-15-0010
DRAWN BY: SH		
DWG: PLAT-SURVEY		