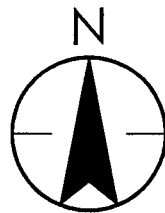


RECEIVED

F-2-F

MAR 23 2016

Franklin County Engineer  
Dean C. Ringle, P.E., P.S.

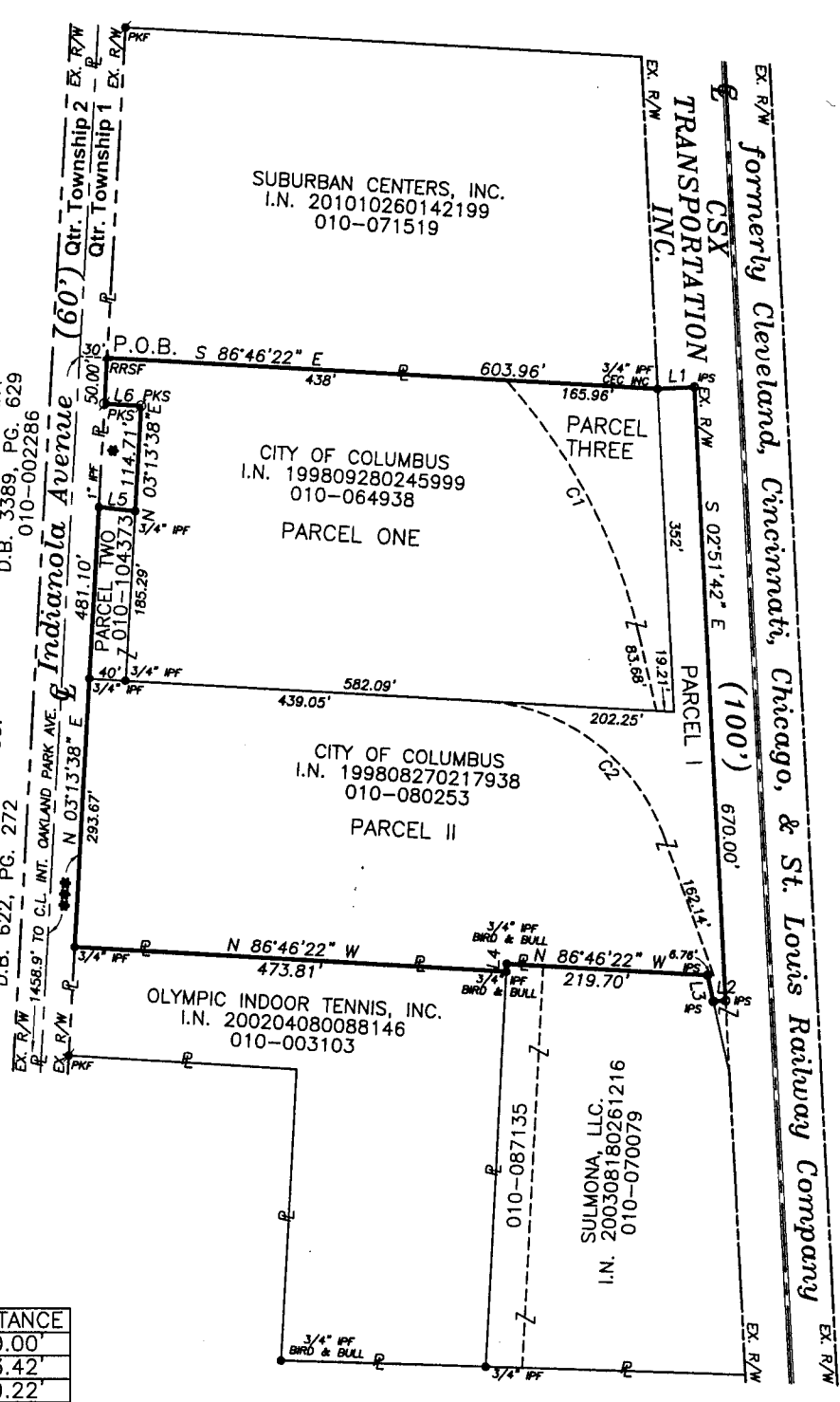


LEGEND

- IPS Iron Pipe Set, 3/4 inch, 30 inches in length, with a yellow cap stamped the name "STANTEC".
- IPF Iron Pipe Found
- ▲ RRSF Railroad Spike Found
- PKS PK Nail Set
- PKF PK Nail Found

PARCEL AC.

ONE	4.159
TWO	0.171
THREE	0.568
I	0.795
II	4.195
TOTAL	9.888



NEW YORK CENTRAL LINES, LLC  
I.N. 200212180325201  
NOW CSX TRANSPORTATION, INC.  
SUCCESSOR BY MERGER  
I.N. 200507210144733  
I.N. 200507210144738  
I.N. 200711080194030  
ORIGINALLY C.C.C. & S.L. RY. CO.  
D.B. 622, PG. 272

CENTRAL OHIO  
TRANSIT AUTHORITY  
D.B. 3389, PG. 629  
010-002286

LINE	BEARING	DISTANCE
L1	N 87°08'18" E	40.00'
L2	S 87°08'18" W	13.42'
L3	N 12°33'22" W	29.22'
L4	S 03°13'38" W	8.40'
L5	S 83°43'29" E	40.06'
L6	N 86°46'22" W	40.00'

CURVE	DELTA	RADIUS	LENGTH	CHORD
C1	29°40'	613.26'	317.53'	314.00'
C2	65°18'	222.67'	253.78'	240.27'



SCALE IN FEET

Boundary Survey of  
**9.888 Acres**  
Lying in

Qtr. Twp. 1, Township-1-N, Range-18-W  
United States Military Lands  
Division of Electricity  
City of Columbus, Franklin County, Ohio  
Scale: 1 inch = 200 Feet

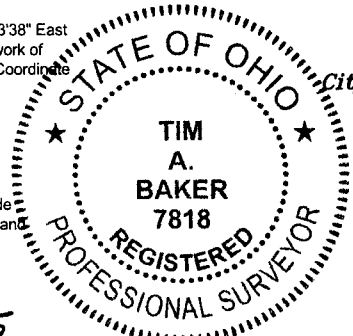
BASIS OF BEARINGS:

The bearings shown hereon are based on the bearing of North 03°13'38" East for the centerline of Indianola Avenue, as determined by a GPS network of field observations performed in November, 2015, Ohio State Plane Coordinate System, South Zone, NSRS 2011.

CERTIFICATION:

I hereby certify that this survey shown on the attached plat was prepared from an on the ground survey on November 18, 2015, made under my direct supervision and that it and the information, courses and distances as shown are correct to the best of my knowledge.

STANTEC CONSULTING SERVICES INC.



*Tim Baker* 12-4-15  
Tim A. Baker Date

Prepared by:

**Stantec**  
1500 Lake Shore Drive  
Columbus, Ohio 43204  
Phone: (614) 486-4383  
Fax: (614) 486-4387

Copyright Reserved  
The Contractor shall verify and be responsible for all dimensions. DO Not scale the drawing - any errors or omissions shall be reported to Stantec without delay. The Copyrights to all designs and drawings are the property of Stantec. Reproduction or use for any purposes other than that authorized by Stantec is forbidden.