

RECEIVED

MAR 10 2016

Franklin County Engineer  
Dean C. Ringle, P.E., P.S.

I-8-B



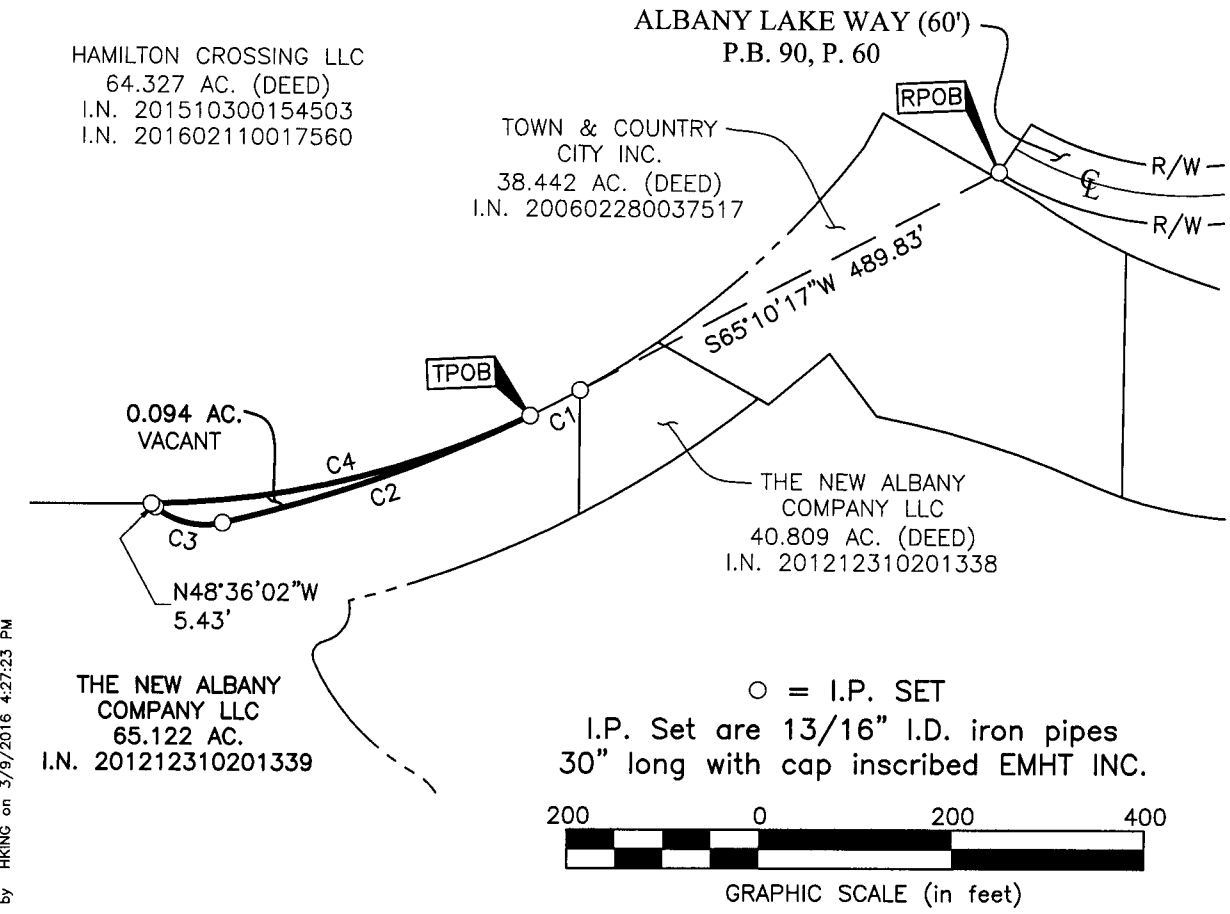
Evans, Mechwart, Hambleton & Tilton, Inc.  
Engineers • Surveyors • Planners • Scientists  
5500 New Albany Road, Columbus, OH 43054  
Phone: 614.775.4500 Toll Free: 888.775.3648  
emht.com

**SURVEY OF ACREAGE PARCEL**  
QUARTER TOWNSHIP 3, TOWNSHIP 2, RANGE 16  
UNITED STATES MILITARY LANDS  
CITY OF COLUMBUS, COUNTY OF FRANKLIN, STATE OF OHIO

Date: March 9, 2016

Job No. 2015-0336

Scale: 1" = 200'

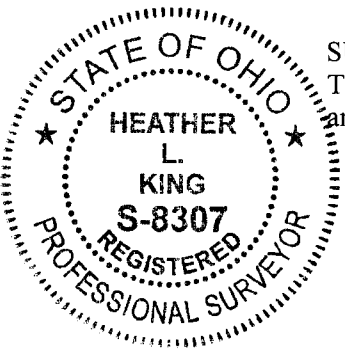


J:\20150336\DWG\04SHEETS\BOUNDARY\20150336-VS-BNDY-02.DWG plotted by KING, HEATHER on 3/9/2016 4:27:48 PM last saved by KING on 3/9/2016 4:27:23 PM Xrefs.

CURVE TABLE					
CURVE	DELTA	RADIUS	ARC	CH. BEARING	CH. DIST.
C1	3°30'24"	950.81'	58.19'	S65°38'09"W	58.18'
C2	13°18'13"	1461.00'	339.23'	S73°34'56"W	338.47'
C3	51°09'55"	83.00'	74.12'	N74°11'00"W	71.68'
C4	24°32'54"	950.81'	407.37'	N79°39'48"E	404.27'

**BASIS OF BEARINGS:**  
Bearings are based on the Ohio State Plane Coordinate System, NAD83, South Zone (2007 Adjustment). Control for bearings was from coordinates of monuments FCGS 8815 & FCGS 8816, having a bearing of North 03° 23' 04" East for a portion of the centerline of Hamilton Road (Relocated), established by the Franklin County Engineering Department, using Global Positioning System procedures and equipment.

**SURVEY NOTE:**  
This survey was prepared using documents of record, prior plats of survey, and observed evidence located by an actual field survey.



By Heather L. King Date 3/10/16  
Heather L. King  
Professional Surveyor No. 8307