

A-4-F



Evans, Mechwart, Hambleton & Tilton, Inc.  
Engineers • Surveyors • Planners • Scientists  
5500 New Albany Road, Columbus, OH 43054  
Phone: 614.775.4500 Toll Free: 888.775.3648  
emht.com

# SURVEY OF ACREAGE PARCEL

SURVEY NUMBER 3453

VIRGINIA MILITARY DISTRICT

CITY OF COLUMBUS, COUNTY OF FRANKLIN, STATE OF OHIO

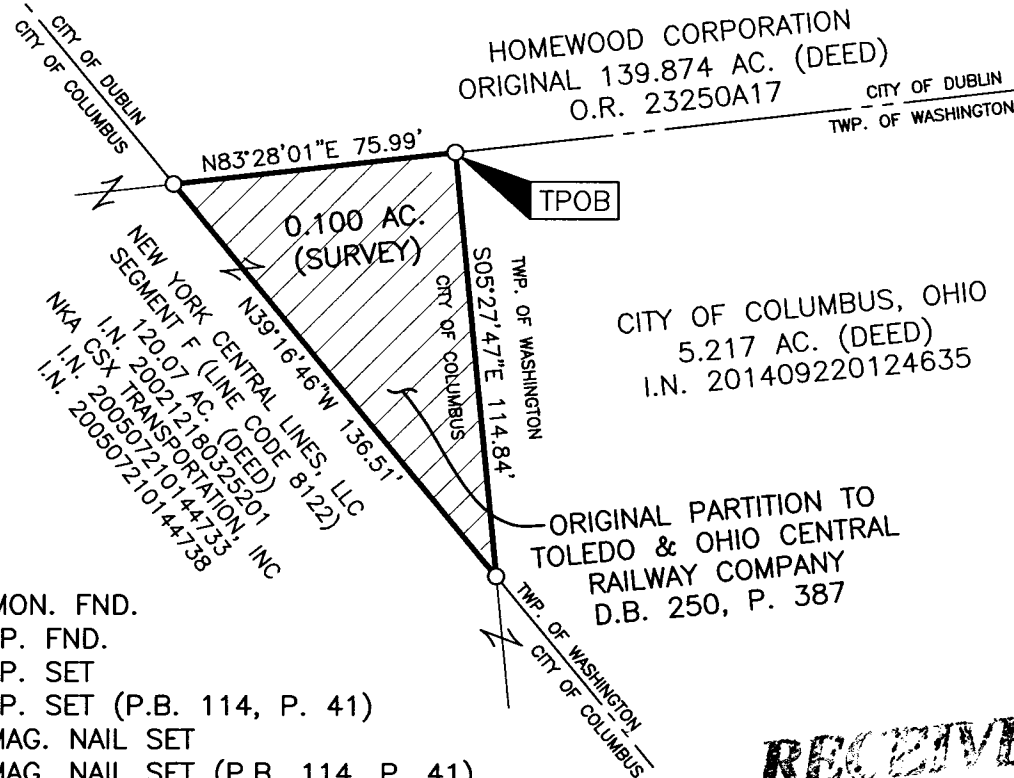
Date: November 20, 2013

Scale: 1" = 50'

Job No. 2012-1129

Revised: March 8, 2016

1/2



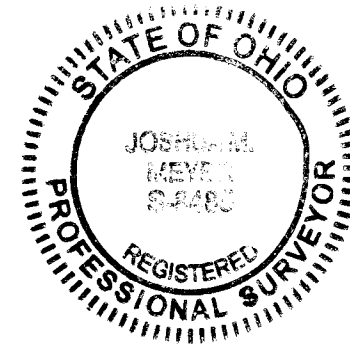
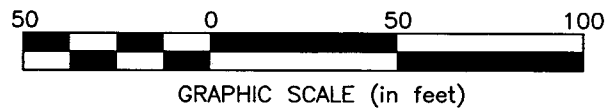
### SURVEY NOTE:

This survey was prepared using documents of record, prior plats of survey, and observed evidence located by an actual field survey.

### BASIS OF BEARINGS:

The bearings shown hereon were transferred from a field traverse originating from and tying to Franklin County Survey Control Monuments, including FCGS 8876 and FCGS 2221, and are based on the Ohio State Plane Coordinate System, South Zone as per NAD 83, 1986 Adjustment, having a calculated bearing of North 88° 53' 20" East.

- = MON. FND.
  - = I.P. FND.
  - = I.P. SET
  - ⊕ = I.P. SET (P.B. 114, P. 41)
  - ⊙ = MAG. NAIL SET
  - ⊕ = MAG. NAIL SET (P.B. 114, P. 41)
- I.P. Set are 13/16" I.D. iron pipe with cap inscribed EMHT INC



RECEIVED

MAR 09 2016

Franklin County Engineer  
Dean C. Ringle, P.E., P.S.

By *J. Meyer*  
Joshua M. Meyer  
Professional Surveyor No. 8485

3-8-2016  
Date

C:\2012\1129\DWG\04SHEETS\BOUNDARY\20121129-16-BNDY-02.DWG plotted by MEYER, JOSH on 3/8/2016 3:51:38 PM last saved by MEYER on 3/8/2016 3:48:14 PM

A-4-F



Evans, Mechwart, Hambleton & Tilton, Inc.  
Engineers • Surveyors • Planners • Scientists  
5500 New Albany Road, Columbus, OH 43054  
Phone: 614.775.4500 Toll Free: 888.775.3648  
emht.com

# SURVEY OF ACREAGE PARCEL

## SURVEY NUMBER 3453

### VIRGINIA MILITARY DISTRICT

### CITY OF COLUMBUS, COUNTY OF FRANKLIN, STATE OF OHIO

Date: November 20, 2013

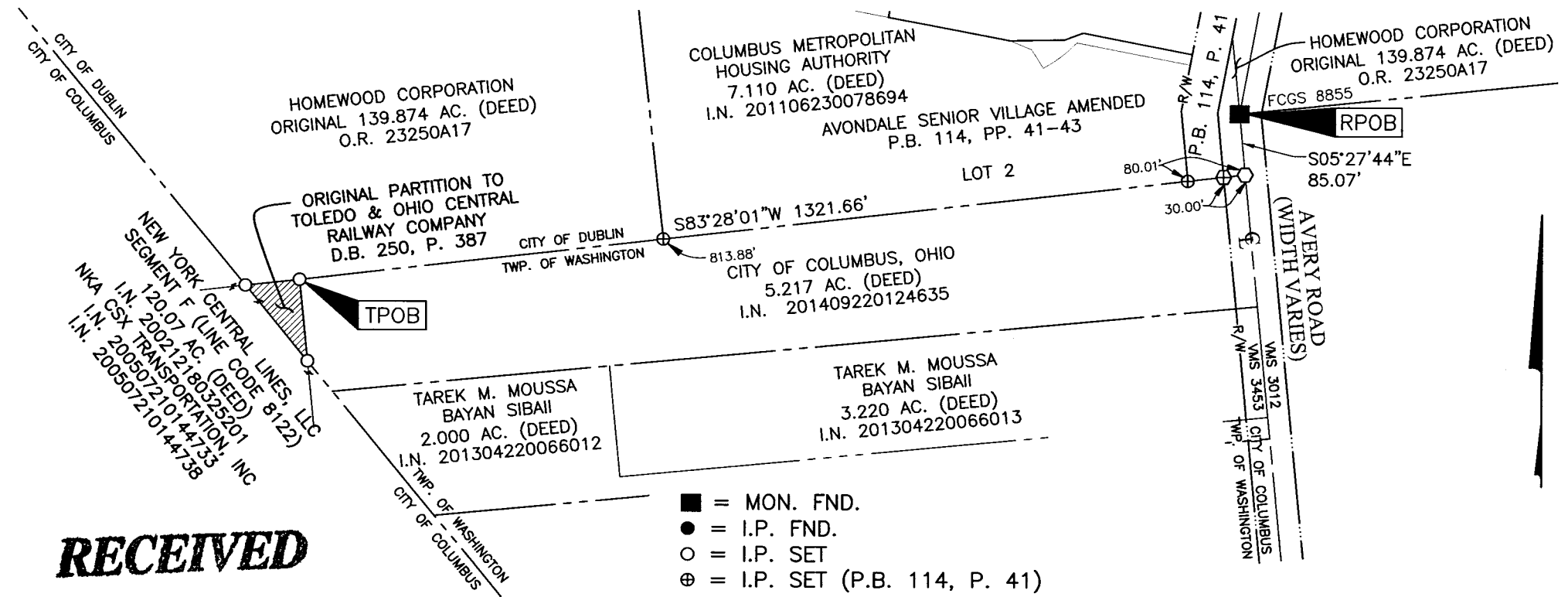
Scale: 1" = 200'

Job No. 2012-1129

Revised: March 8, 2016

2/2

C:\2012\1129\DWG\ASHEETS\BOUNDARY\20121129-16-BNDY-02.DWG plotted by MEYER, JOSI on 3/8/2016 3:52:16 PM last saved by MEYER, JOSI on 3/8/2016 3:48:14 PM



# RECEIVED

MAR 09 2016

Franklin County Engineer  
Dean C. Ringle, P.E., P.S.

- = MON. FND.
  - = I.P. FND.
  - = I.P. SET
  - ⊕ = I.P. SET (P.B. 114, P. 41)
  - ⊙ = MAG. NAIL SET
  - ⊕ = MAG. NAIL SET (P.B. 114, P. 41)
- I.P. Set are 13/16" I.D. iron pipe with cap inscribed EMHT INC

