

G-7-C

P:\2015\150-238\Survey\Draw\150238-SV01-SRV\_ROW.dwg\LAYOU1\LS:(2/9/2016 - mockroyd) - LP: 2/9/2016 4:09 PM

### PLAT OF SURVEY

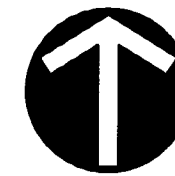
STATE OF OHIO, COUNTY OF FRANKLIN, CITY OF GROVE CITY  
VIRGINIA MILITARY SURVEY NUMBER 6839

**RECEIVED**

FEB 09 2016

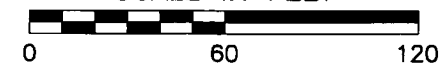
Franklin County Engineer  
**Dean C. Ringle, P.E., P.S.**  
THE VILLAGE AT GANTZ MEADOWS, LLC.  
IN. 200603080044133  
3.892 ACRES

THE VILLAGE AT GANTZ MEADOWS,  
LLC.  
IN. 200603080044135  
5.159 ACRES



NORTH

SCALE IN FEET



LINE TABLE		
LINE #	DIRECTION	LENGTH
L1	S 81°59'51" E	320.78'
L2	S 78°22'48" W	29.78'
L3	N 81°59'51" W	293.60'
L4	N 12°59'45" E	10.03'

#### LEGEND

- IRON PIN FOUND
- IRON PIN SET

#### ACREAGE BREAKDOWN

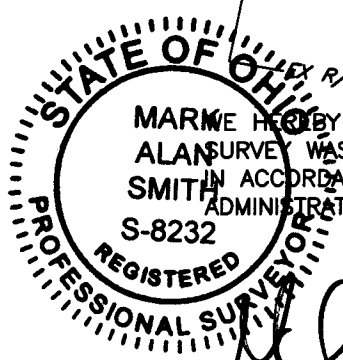
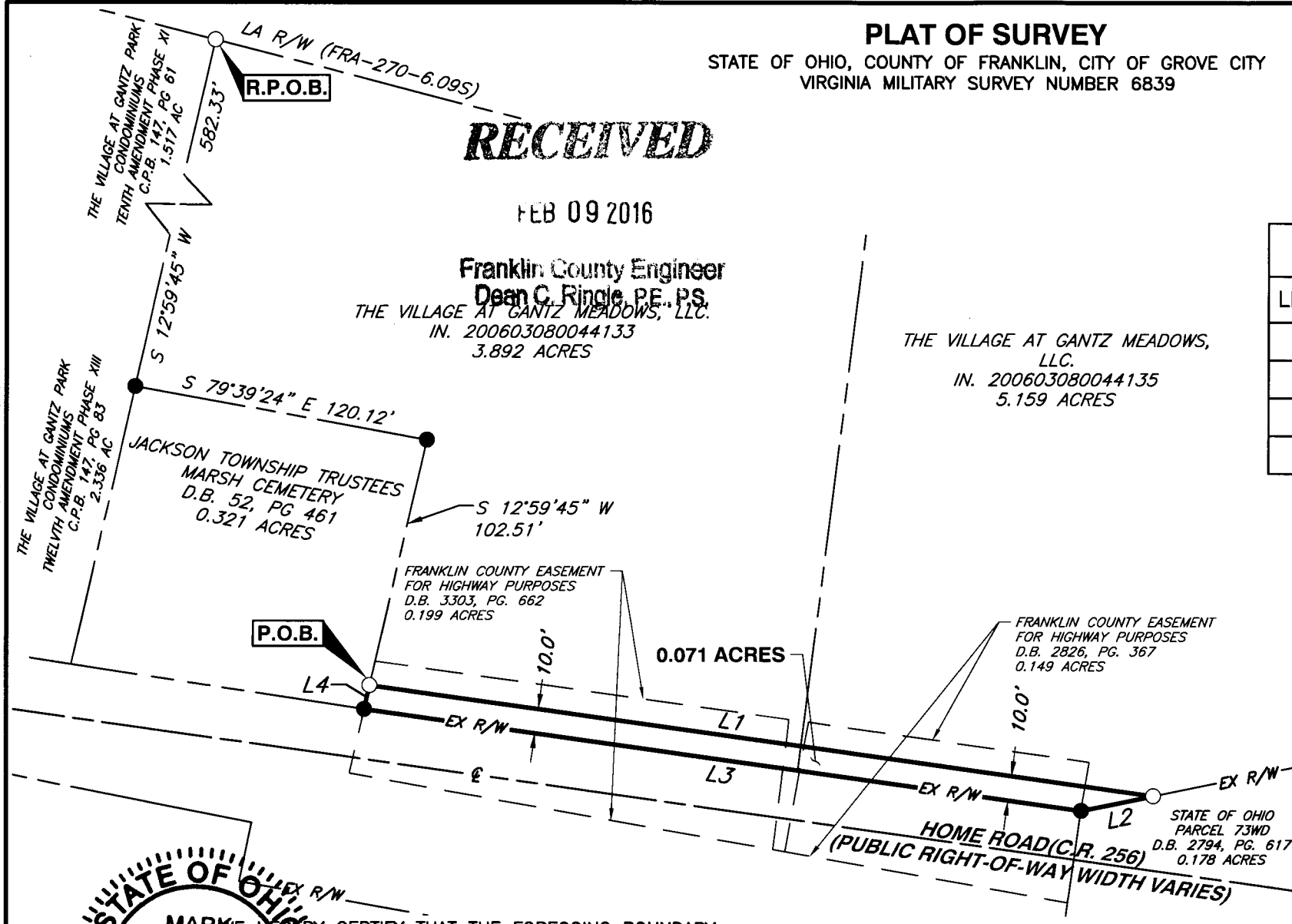
0.041 ACRES - VILLAGE AT GANTZ MEADOWS - 3.892 ACRE TRACT  
 0.030 ACRES - VILLAGE AT GANTZ MEADOWS - 5.159 ACRE TRACT

#### NOTE:

IRON PINS SET ARE 5/8" REBAR, 30 INCHES IN LENGTH, WITH A YELLOW CAP BEARING THE INITIALS "CEC".

#### BASIS OR BEARINGS

THE BEARINGS SHOWN HEREON WERE DETERMINED BY GPS OBSERVATIONS BETWEEN FRANKLIN COUNTY MONUMENTS FCGS 4432 AND FCGS 4428 BASED ON THE STATE PLANE COORDINATE SYSTEM OHIO, SOUTH ZONE, NAD 83 (1986 ADJUSTMENT), IN WHICH SAID MONUMENTS HAVE A BEARING OF NORTH 02°24'45" EAST BETWEEN THEM.



MARK ALAN SMITH  
REGISTERED SURVEYOR NO. 8232

*Handwritten signature*  
DATE 2/10/2016

**CEC**  
Civil & Environmental Consultants, Inc.  
250 Old Wilson Bridge Road · Suite 250 · Worthington, OH 43085  
614-540-6633 · 888-598-6808  
www.cecinc.com

VILLAGE AT GANTZ MEADOWS  
VILLAGE COMMUNITIES  
CITY OF GROVE CITY, OHIO  
  
0.071 ACRES

DRAWN BY: JEC	CHECKED BY: MJA	APPROVED BY: MAS	DRAWING NO.:
DATE: JANUARY 2016	DWG SCALE: 1"=60'	PROJECT NO: 150-238	<b>PLAT</b>