



Evans, Mechwart, Hambleton & Tilton, Inc.  
 Engineers • Surveyors • Planners • Scientists  
 5500 New Albany Road, Columbus, OH 43054  
 Phone: 614.775.4500 Toll Free: 888.775.3648

emht.com

# SURVEY OF ACREAGE PARCEL

SURVEY No. 8231

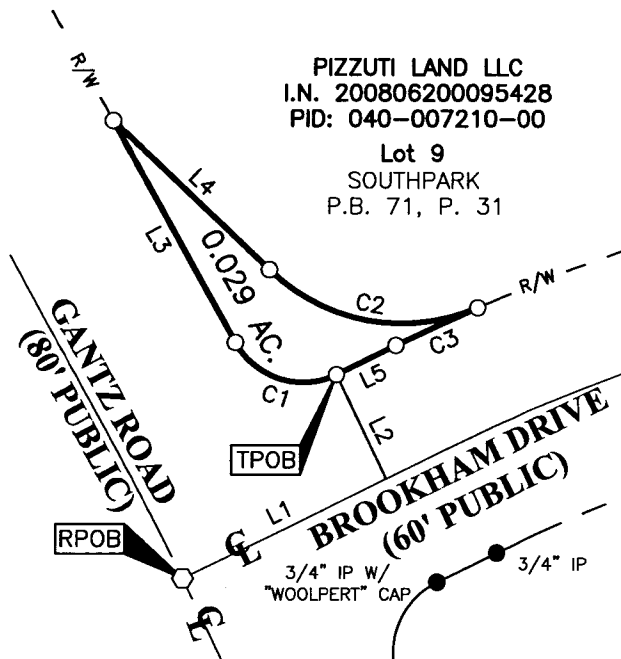
VIRGINIA MILITARY DISTRICT

CITY OF GROVE CITY, COUNTY OF FRANKLIN, STATE OF OHIO

Date: January 19, 2016

Scale: 1" = 50'

Job No. 2015-1151



PIZZUTI LAND LLC  
 I.N. 200806200095428  
 PID: 040-007210-00

Lot 9  
 SOUTHPARK  
 P.B. 71, P. 31

### BASIS OF BEARINGS:

The Bearings shown hereon are based on the Ohio State Plane Coordinate System South Zone as per NAD83 (NSRS2007). Control for bearings was from coordinates of monuments FCGS 5539 and FCGS 0024 RESET, having a bearing of North 08° 51' 44" East, established by the Franklin County Engineering Department, using Global Positioning System procedures and equipment.

### SURVEY NOTE:

This survey was prepared using documents of record, prior plats of survey, and observed evidence located by an actual field survey.

LINE TABLE		
LINE	BEARING	DISTANCE
L1	N63°52'39"E	58.82'
L2	N26°07'21"W	30.00'
L3	N28°49'34"W	65.61'
L4	S46°14'52"E	55.77'
L5	S63°52'39"W	17.41'

**RECEIVED**

JAN 22 2016

Franklin County Engineer  
 Dean C. Ringle, P.E., P.S.



- = I.P. FND.
- = I.P. SET
- = MAG. NAIL SET

I.P. Set are 13/16" I.D. iron pipes  
 30" long with cap inscribed EMHT INC.



GRAPHIC SCALE (in feet)

CURVE TABLE					
CURVE	DELTA	RADIUS	ARC	CH. BEARING	CH. DIST.
C1	87°17'47"	20.00'	30.47'	N72°28'27"W	27.61'
C2	67°20'22"	50.00'	58.76'	S79°55'03"E	55.44'
C3	2°32'05"	530.00'	23.45'	S65°08'42"W	23.45'

By *J.M.M.*  
 Joshua M. Meyer

Professional Surveyor No. 8485

1-19-2016

Date