

DEC 14 2015

Franklin County Engineer
Dean C. Ringle, P.E., P.S.



Evans, Mechwart, Hambleton & Tilton, Inc.
Engineers • Surveyors • Planners • Scientists
5500 New Albany Road, Columbus, OH 43054
Phone: 614.775.4500 Toll Free: 888.775.3648
emht.com

SURVEY OF ACREAGE PARCEL

SURVEY NUMBER 3453

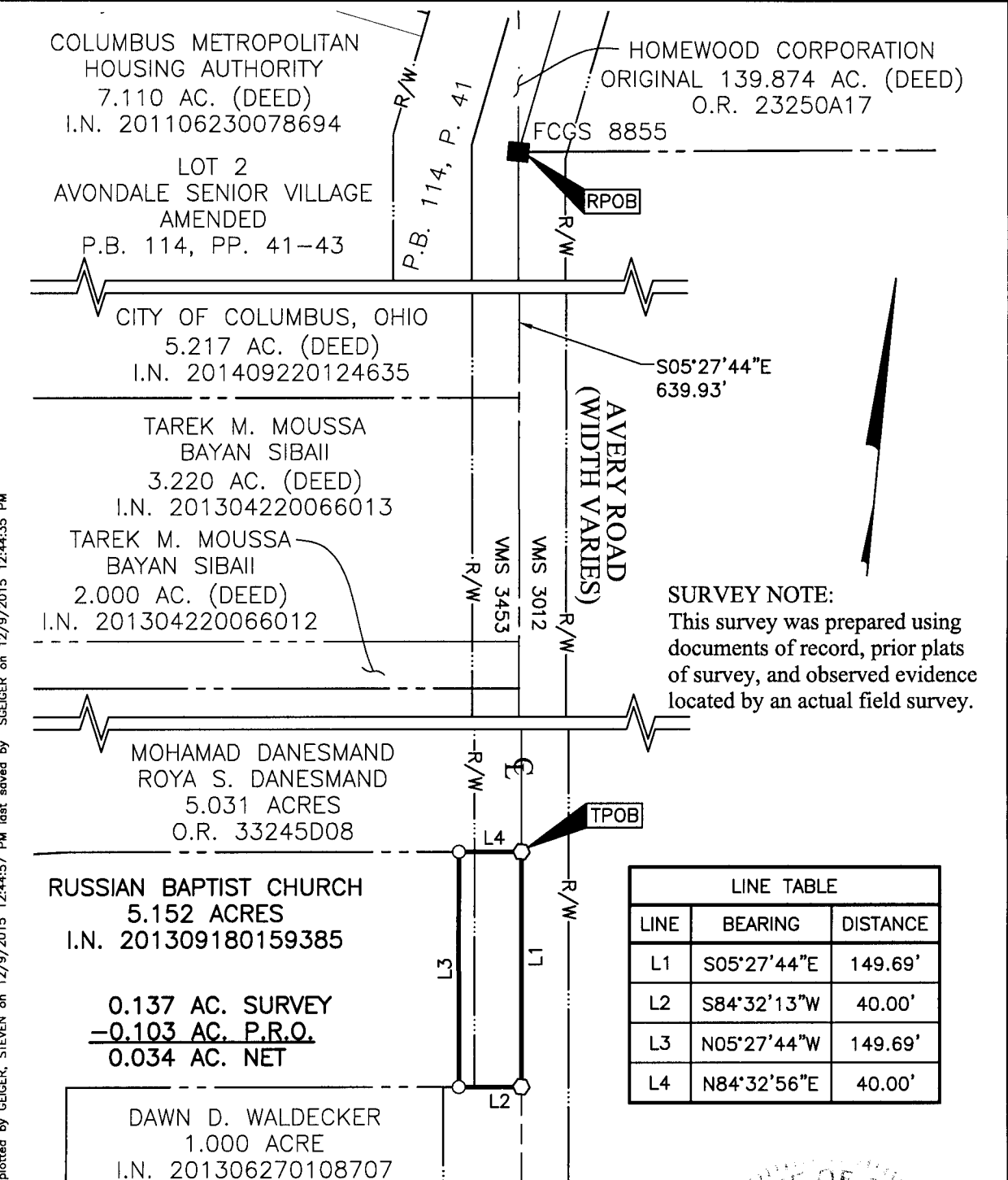
VIRGINIA MILITARY DISTRICT

CITY OF COLUMBUS, COUNTY OF FRANKLIN, STATE OF OHIO

Date: December 9, 2015

Job No. 2012-1129

Scale: 1" = 100'



SURVEY NOTE:
This survey was prepared using documents of record, prior plats of survey, and observed evidence located by an actual field survey.

| LINE TABLE | | |
|------------|-------------|----------|
| LINE | BEARING | DISTANCE |
| L1 | S05°27'44"E | 149.69' |
| L2 | S84°32'13"W | 40.00' |
| L3 | N05°27'44"W | 149.69' |
| L4 | N84°32'56"E | 40.00' |

J:\2012\1129\DWG\04SHEETS\BOUNDARY\20121129-VS-BNDY-05.DWG plotted by GEIGER, STEVEN on 12/9/2015 12:44:57 PM last saved by SGEIGER on 12/9/2015 12:44:35 PM Xrefs:

BASIS OF BEARINGS:

The bearings shown hereon were transferred from a field traverse originating from and tying to Franklin County Survey Control Monuments, including FCGS 8876 and FCGS 2221, and are based on the Ohio State Plane Coordinate System, South Zone as per NAD 83, 1986 Adjustment, having a calculated bearing of North 88° 53' 20" East.

- = MON. FND.
- = I.P. FND.
- = I.P. SET
- = MAG. NAIL SET
- I.P. Set are 13/16" I.D. iron pipe with cap inscribed EMHT INC



GRAPHIC SCALE (in feet)



By Joshua M. Meyer 12-9-2015
Professional Surveyor No. 8485 Date