



Evans, Mechwart, Hambleton & Tilton, Inc.  
 Engineers • Surveyors • Planners • Scientists  
 5500 New Albany Road, Columbus, OH 43054  
 Phone: 614.775.4500 Toll Free: 888.775.3648  
 emht.com

# SURVEY OF ACREAGE PARCEL

## QUARTER TOWNSHIP 2, TOWNSHIP 2, RANGE 17

### UNITED STATES MILITARY LANDS

### CITY OF WESTERVILLE, COUNTY OF FRANKLIN, STATE OF OHIO

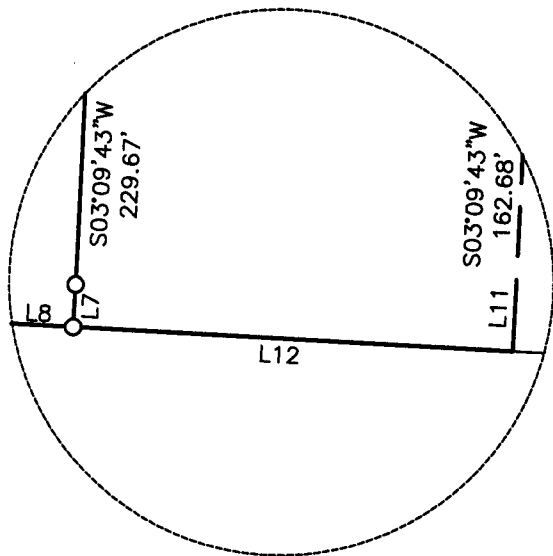
Date: October 2, 2014

Job No. 2013-0183

Scale: 1" = 50'

Revised: January 8, 2015  
 Revised: November 24, 2015

1  
2

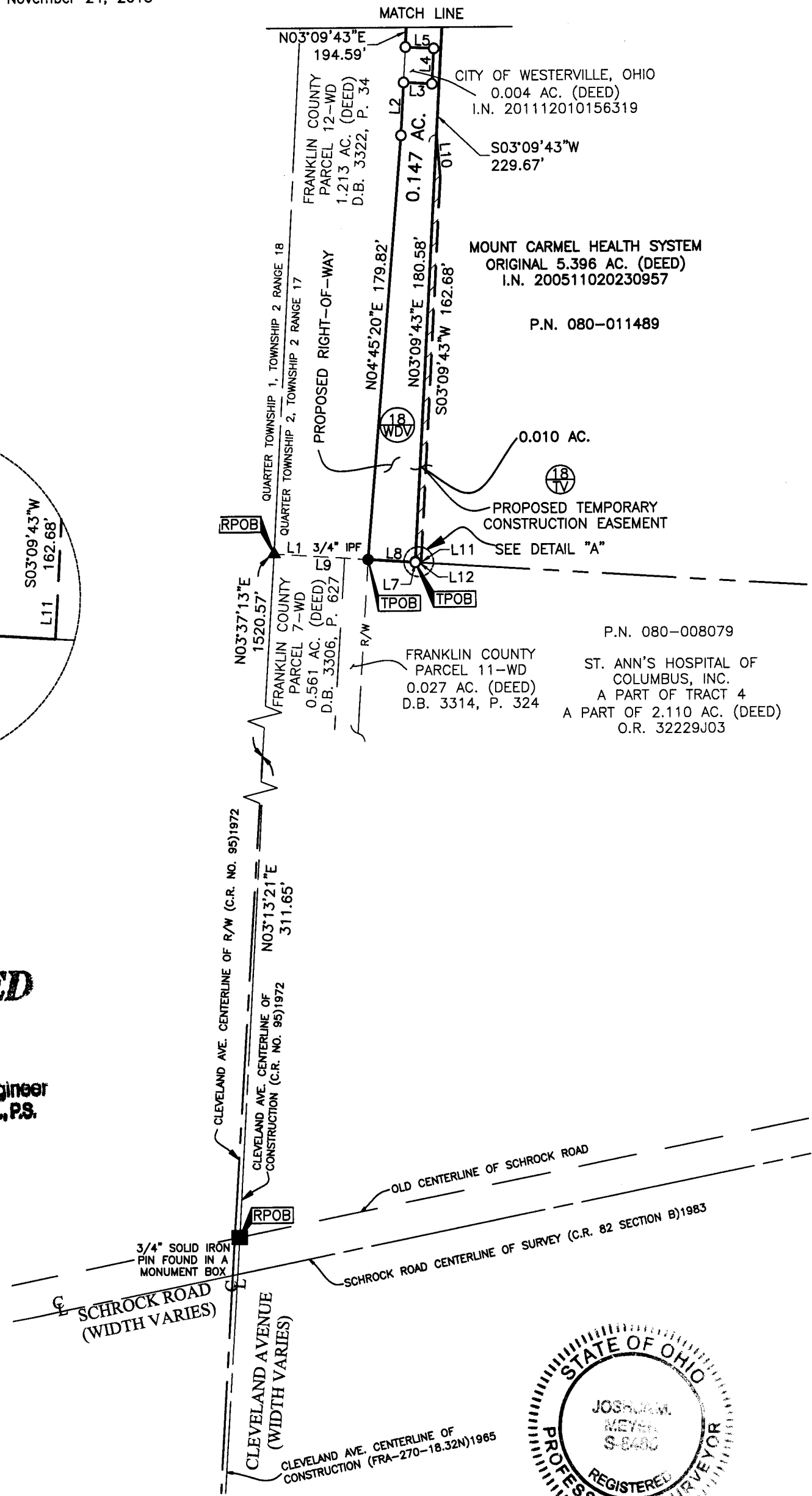


DETAIL "A"  
NOT TO SCALE

**RECEIVED**

NOV 27 2015

Franklin County Engineer  
**Dean C. Ringle, P.E., P.S.**

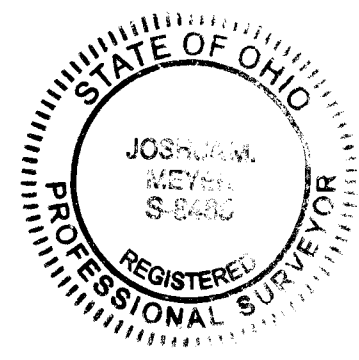


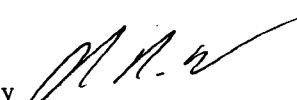
- = STONE FND.
- = MON. FND.
- = 3/4" I.P. FND.
- = I.P. SET
- = MAG. NAIL FND.
- = MAG. NAIL SET
- ▲ = R.R. SPK. FND.
- △ = R.R. SPK. SET
- = P.K. NAIL FND.

I.P. Set are 13/16" I.D. iron pipe with cap inscribed EMHT INC



GRAPHIC SCALE (in feet)



By   
 Joshua M. Meyer  
 Professional Surveyor No. 8485

11-24-2015  
 Date

J:\20130183\DWG\04SHEETS\BOUNDARY\20130183-VS-BNDY-18.DWG plotted by GEIGER, STEVEN on 11/23/2015 9:42:43 AM last saved by SEIGER on 11/23/2015 9:17:03 AM Xrefs: 20130183-CS-REFER-RWAY-F.DWG



Evans, Mechwart, Hambleton & Tilton, Inc.  
 Engineers • Surveyors • Planners • Scientists  
 5500 New Albany Road, Columbus, OH 43054  
 Phone: 614.775.4500 Toll Free: 888.775.3648  
 emht.com

**SURVEY OF ACREAGE PARCEL**  
 QUARTER TOWNSHIP 2, TOWNSHIP 2, RANGE 17  
 UNITED STATES MILITARY LANDS  
 CITY OF WESTERVILLE, COUNTY OF FRANKLIN, STATE OF OHIO

Date: October 2, 2014

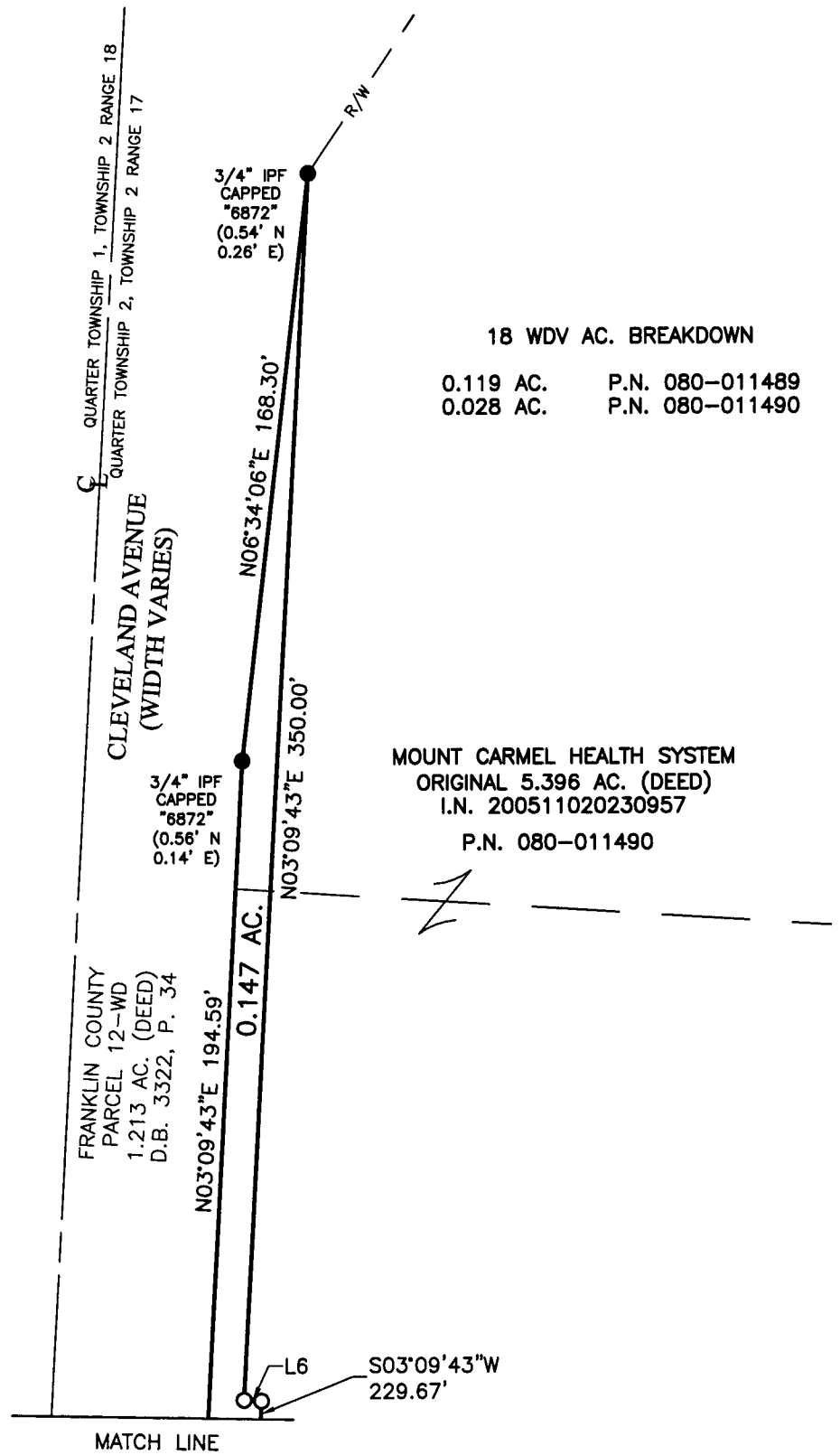
Job No. 2013-0183

Scale: 1" = 50'

Revised: January 8, 2015  
 Revised: November 24, 2015

2  
2

| Line Table  |             |        |
|-------------|-------------|--------|
| Line Number | Direction   | Length |
| L1          | S86°22'47"E | 40.00' |
| L2          | N03°09'43"E | 22.41' |
| L3          | S86°50'17"E | 12.00' |
| L4          | N03°09'43"E | 15.00' |
| L5          | N86°50'17"W | 12.00' |
| L6          | S86°50'17"E | 5.00'  |
| L7          | S03°37'13"W | 0.24'  |
| L8          | N86°22'47"W | 20.00' |
| L9          | S86°22'47"E | 60.00' |
| L10         | S04°46'59"E | 18.09' |
| L11         | S03°37'13"W | 0.25'  |
| L12         | N86°22'47"W | 2.50'  |



**RECEIVED**

NOV 27 2015

Franklin County Engineer  
 Dean C. Ringle, P.E., P.S.

- = STONE FND.
- = MON. FND.
- = 3/4" I.P. FND.
- = I.P. SET
- = MAG. NAIL FND.
- = MAG. NAIL SET
- ▲ = R.R. SPK. FND.
- △ = R.R. SPK. SET
- ◆ = P.K. NAIL FND.

I.P. Set are 13/16" I.D. iron pipe with cap inscribed EMHT INC



GRAPHIC SCALE (in feet)

**BASIS OF BEARINGS:**

The bearings shown on this plat are based on the Ohio State Plane Coordinate System, South Zone, NAD83 (1986). Said bearings originated from a field traverse which was tied (referenced) to said coordinate system by GPS observations and observations of selected Franklin County Engineering Department monuments FRANK 85 and WEST 17. The portion of the centerline of Schrock Road, having a bearing of N78°31'16"E and monumented as shown hereon, is designated the "basis of bearing" for this survey.

**SURVEY NOTE:**

This survey was prepared using documents of record, prior plats of survey, and observed evidence located by an actual field survey.

J:\20130183\DWG\04SHEETS\BOUNDARY\20130183-VS-BNDY-18.DWG plotted by GEIGER, STEVEN on 11/23/2015 9:41:42 AM last saved by SGEIGER on 11/23/2015 9:17:03 AM