

NOV 23 2015

Franklin County Engineer  
Dean C. Ringle, P.E., P.S.

F.S.F



Evans, Mechwart, Hambleton & Tilton, Inc.  
Engineers • Surveyors • Planners • Scientists  
5500 New Albany Road, Columbus, OH 43054  
Phone: 614.775.4300 Toll Free: 888.775.3648  
emht.com

# SURVEY OF ACREAGE PARCEL

QUARTER TOWNSHIP 3, TOWNSHIP 1, RANGE 18  
UNITED STATES MILITARY LANDS  
CITY OF COLUMBUS, COUNTY OF FRANKLIN, STATE OF OHIO

Date: August 24, 2015 Job No. 2015-0673 Scale: 1" = 50'

Revised September 17, 2015  
Revised September 30, 2015  
Revised November 18, 2015

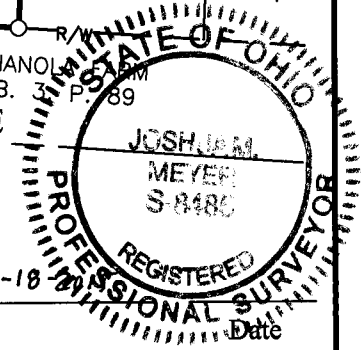
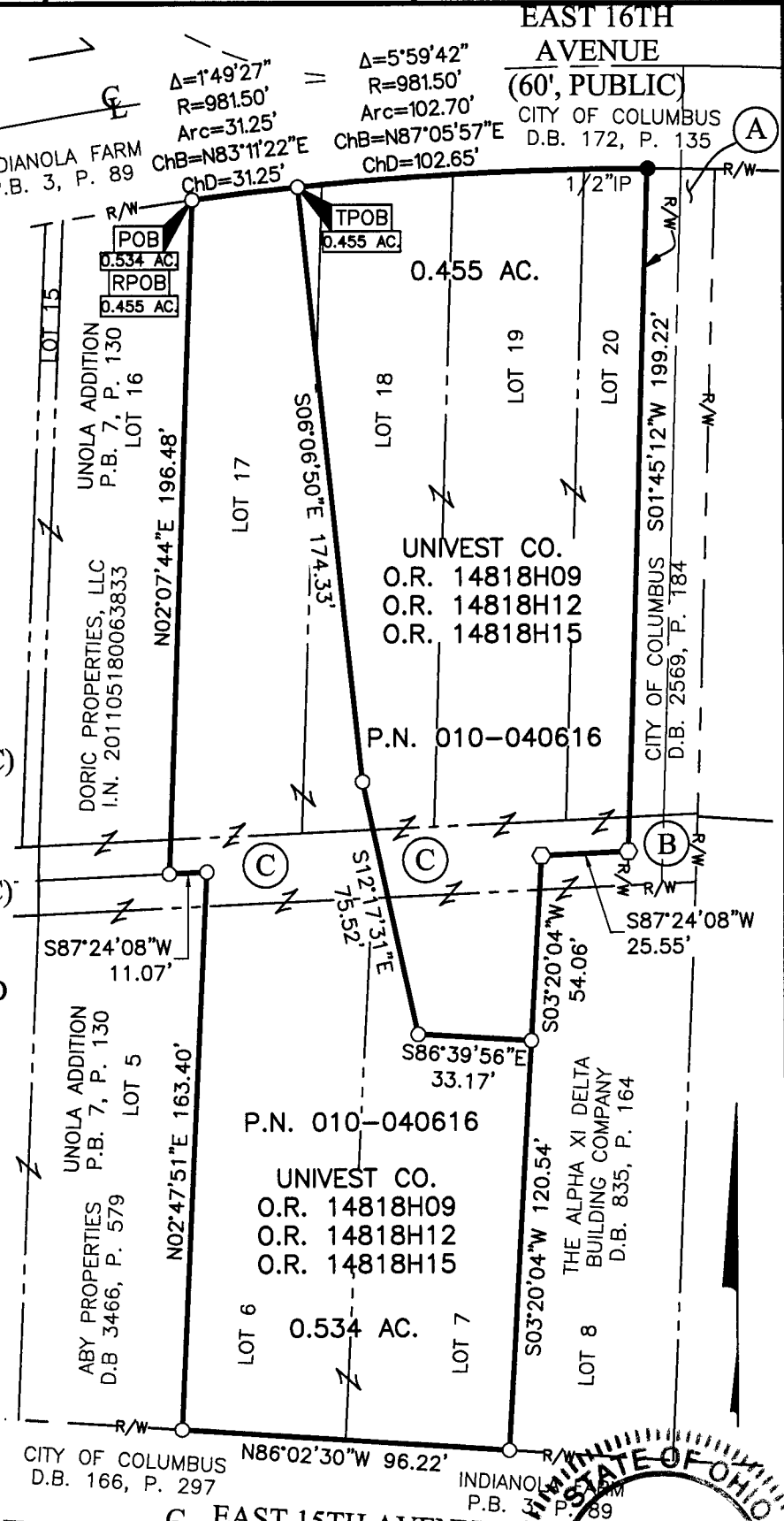
**BASIS OF BEARINGS:**  
The bearings shown hereon are based on the Ohio State Plane Coordinate System South Zone per NAD83 (NSRS2007). Control for bearings was from coordinates of monuments RINGLE and COC 4-83 having a bearing of South 34° 13' 31" West, established by the Franklin County Engineering Department, using Global Positioning procedures and equipment.

**SURVEY NOTE:**  
This survey was prepared using documents of record, prior plats of survey, and observed evidence located by an actual field survey.

- (A) 20' ALLEY (PUBLIC)  
ORD. NO. 657-64  
(JUNE 15, 1964)
- (B) 20' ALLEY (PUBLIC)  
P.B. 7, P. 130
- (C) ALLEY VACATED  
BY CITY OF  
COLUMBUS  
ORDINANCE NO.  
658-64  
(JUNE 15, 1964)

- = STONE FND.
- = MON. FND.
- = I.P. FND.
- = I.P. SET
- = MAG. NAIL FND.
- = MAG. NAIL SET
- ▲ = R.R. SPK. FND.
- △ = R.R. SPK. SET
- ◆ = P.K. NAIL FND.

I.P. Set are 13/16" I.D. iron pipe with cap inscribed EMHT INC



By *J.M.M.* Joshua M. Meyer  
Professional Surveyor No. 8485  
Date 11-18-2015

J:\20150673\DWG\04-SHEETS\BOUNDARY\20150673-VS-BNDY-01.DWG plotted by OIMAS, JACOB on 11/18/2015 3:41:17 PM  
Xrefs: J:\20150673\DWG\04-SHEETS\BOUNDARY\20150673-VS-BNDY-01.DWG last saved by JIMAS on 11/18/2015 3:41:31 PM