



Evans, Mechwart, Hambleton & Tilton, Inc.
 Engineers • Surveyors • Planners • Scientists
 5500 New Albany Road, Columbus, OH 43054
 Phone: 614.775.4500 Toll Free: 888.775.3648
 emht.com

SURVEY OF ACREAGE PARCEL

QUARTER TOWNSHIP 3, TOWNSHIP 2, RANGE 16

UNITED STATES MILITARY LANDS

CITY OF COLUMBUS, COUNTY OF FRANKLIN, STATE OF OHIO

Date: September 24, 2013

Scale: 1" = 50'

Job No. 2013-0406

Revised: August 28, 2015

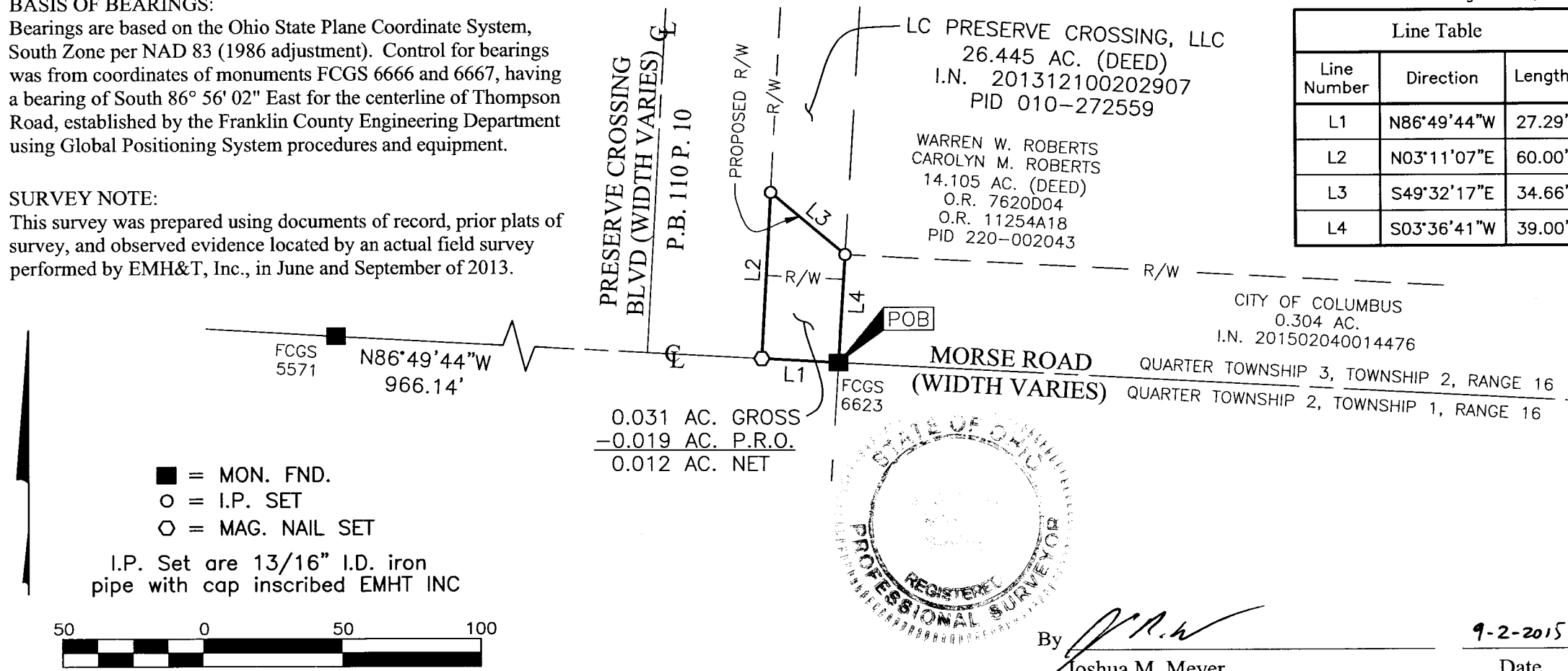
BASIS OF BEARINGS:

Bearings are based on the Ohio State Plane Coordinate System, South Zone per NAD 83 (1986 adjustment). Control for bearings was from coordinates of monuments FCGS 6666 and 6667, having a bearing of South 86° 56' 02" East for the centerline of Thompson Road, established by the Franklin County Engineering Department using Global Positioning System procedures and equipment.

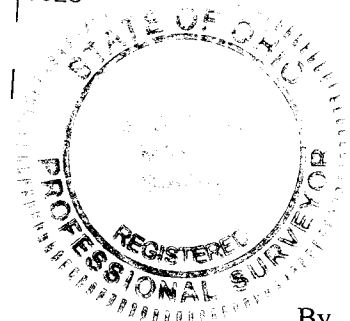
SURVEY NOTE:

This survey was prepared using documents of record, prior plats of survey, and observed evidence located by an actual field survey performed by EMH&T, Inc., in June and September of 2013.

Line Table		
Line Number	Direction	Length
L1	N86°49'44"W	27.29'
L2	N03°11'07"E	60.00'
L3	S49°32'17"E	34.66'
L4	S03°36'41"W	39.00'



0.031 AC. GROSS
 -0.019 AC. P.R.O.
 0.012 AC. NET



By *J.M.M.*
 Joshua M. Meyer
 Professional Surveyor No. 8485

9-2-2015
 Date

RECEIVED

SEP 24 2015

Franklin County Engineer
 Dean C. Ringler, P.E., P.S.