

PROJ. NO. 13.517
 DRAWN BY: MJW
 CHECKED BY: BPB
 DATE: 7/9/2015

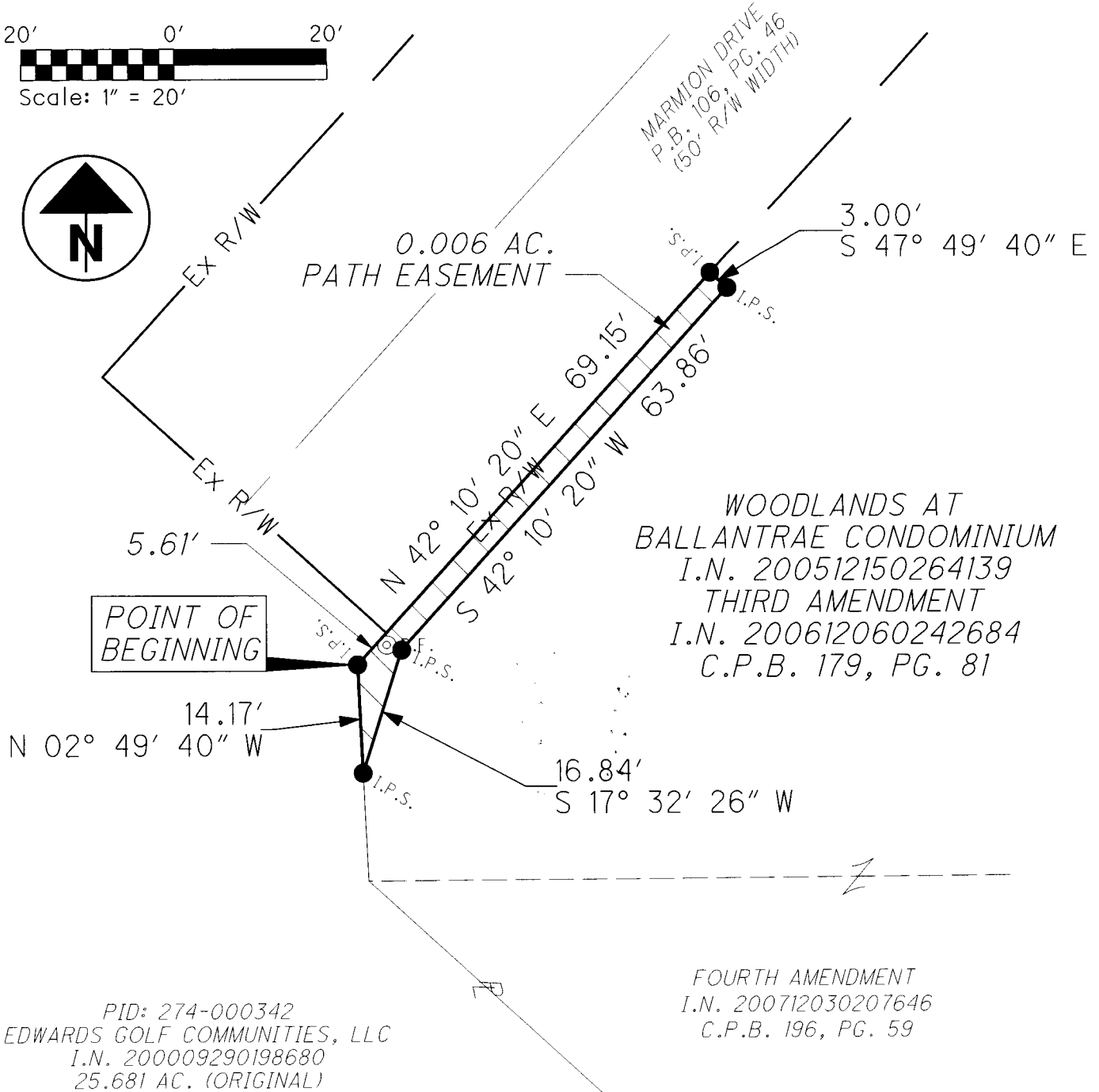
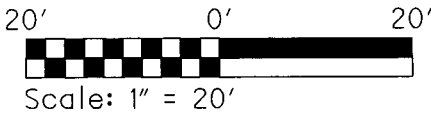


AMERICAN
STRUCTUREPOINT
 INC.

2550 CORPORATE EXCHANGE DR, STE 300
 COLUMBUS, OH 43231
 TEL 614.901.2235 FAX 614.901.2236
 www.structurepoint.com

EXHIBIT "B"
 13-P-2
0.006 AC. PATH EASEMENT
ACQUIRED FROM
WOODLANDS AT BALLANTRAE
CONDOMINIUM ASSOCIATION

SITUATED IN THE STATE OF OHIO, COUNTY OF FRANKLIN
 CITY OF DUBLIN, LOCATED IN VIRGINIA MILITARY SURVEY NUMBER 6953



RECEIVED

OCT 22 2015

Franklin County Engineer
 Dean C. Ringle, P.E., P.S.

- M.N.S. MAG NAIL SET
- I.P.S. 5/8" IRON PIN SET WITH CAP "STRUCTUREPOINT-PS 8438"
- I.P.F. IRON PIN FOUND
- ⊙ P.F. IRON PIPE FOUND
- ⊕ FRANKLIN COUNTY GEODETIC SURVEY MONUMENT



BASIS OF BEARING:
 THE BEARINGS SHOWN HEREON ARE BASED ON THE BEARING OF N 83° 49' 54" E FOR THE CENTERLINE OF RINGS ROAD, AS REFERENCED TO THE OHIO STATE PLANE COORDINATE SYSTEM (SOUTH ZONE) AND THE NORTH AMERICAN DATUM OF 1983 (2007 ADJUSTMENT) AS ESTABLISHED UTILIZING A GPS SURVEY ORIGINATING ON FRANKLIN COUNTY ENGINEER'S OFFICE PUBLISHED MONUMENTS "0049" AND "7747".

I HEREBY CERTIFY THAT:
 THIS DRAWING REPRESENTS THE RESULTS OF AN ACTUAL FIELD SURVEY OF THE PREMISES PERFORMED BY AMERICAN STRUCTUREPOINT, INC., AND IS TRUE AND CORRECT TO THE BEST OF MY KNOWLEDGE AND BELIEF.

Brian P. Bingham
 BRIAN P. BINGHAM, P.S. NO. 8438
 AMERICAN STRUCTUREPOINT, INC.

10/20/2015
 DATE