

PROJ. NO.	13.517
DRAWN BY:	MJW
CHECKED BY	BPB
DATE:	7/6/2015

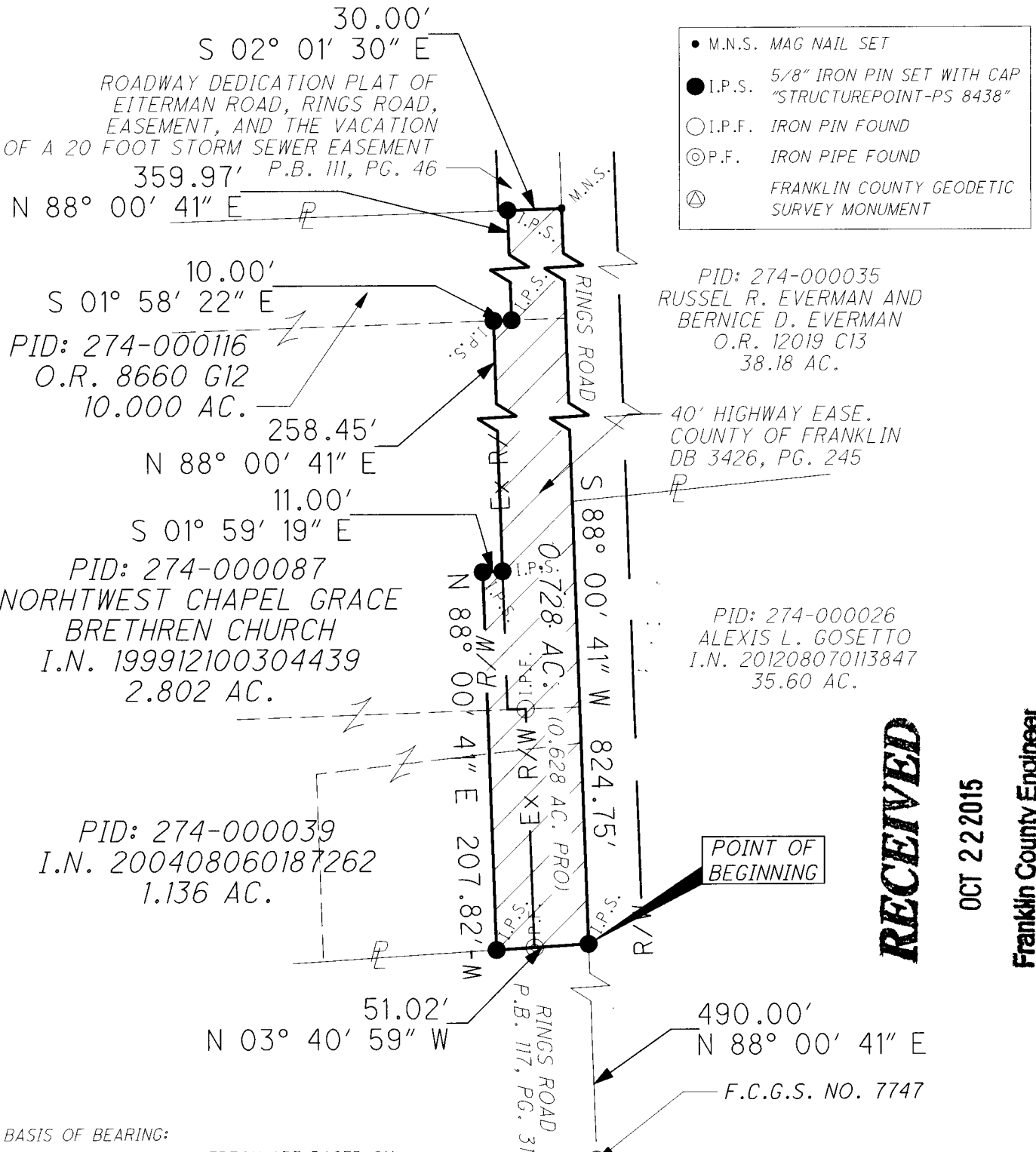


AMERICAN
STRUCTUREPOINT
INC

2550 CORPORATE EXCHANGE DR, STE 300
COLUMBUS, OH 43231
TEL 614.901.2235 FAX 614.901.2236
www.structurepoint.com

EXHIBIT "B"
20-WD
0.728 AC. FEE R/W
ACQUIRED FROM
NORTHWEST CHAPEL GRACE
BRETHREN CHURCH

SITUATED IN THE STATE OF OHIO, COUNTY OF FRANKLIN
CITY OF DUBLIN, LOCATED IN VIRGINIA MILITARY SURVEY
NUMBER 3453



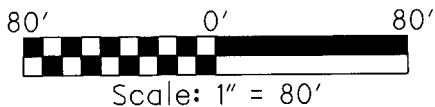
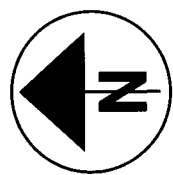
- M.N.S. MAG NAIL SET
- I.P.S. 5/8" IRON PIN SET WITH CAP "STRUCTUREPOINT-PS 8438"
- I.P.F. IRON PIN FOUND
- ⊙ P.F. IRON PIPE FOUND
- ⊕ FRANKLIN COUNTY GEODETIC SURVEY MONUMENT

RECEIVED

OCT 22 2015

Franklin County Engineer
Dean C. Ringle, P.E., P.S.

BASIS OF BEARING:
THE BEARINGS SHOWN HEREON ARE BASED ON
THE BEARING OF N 83° 49' 54" E FOR THE
CENTERLINE OF RINGS ROAD, AS REFERENCED
TO THE OHIO STATE PLANE COORDINATE
SYSTEM (SOUTH ZONE) AND THE NORTH
AMERICAN DATUM OF 1983 (2007
ADJUSTMENT) AS ESTABLISHED UTILIZING A
GPS SURVEY ORIGINATING ON FRANKLIN
COUNTY ENGINEER'S OFFICE PUBLISHED
MONUMENTS "0049" AND "7747".



I HEREBY CERTIFY THAT:
THIS DRAWING REPRESENTS THE RESULTS OF AN ACTUAL FIELD SURVEY
OF THE PREMISES PERFORMED BY AMERICAN STRUCTUREPOINT, INC., AND
IS TRUE AND CORRECT TO THE BEST OF MY KNOWLEDGE AND BELIEF.

Brian P. Bingham
BRIAN P. BINGHAM, P.S. NO. 8438
AMERICAN STRUCTUREPOINT, INC.

10/20/2015
DATE