

RECEIVED

SEP 29 2015

Franklin County Engineer  
Dean C. Ringle, P.E., P.S.

A-3-F



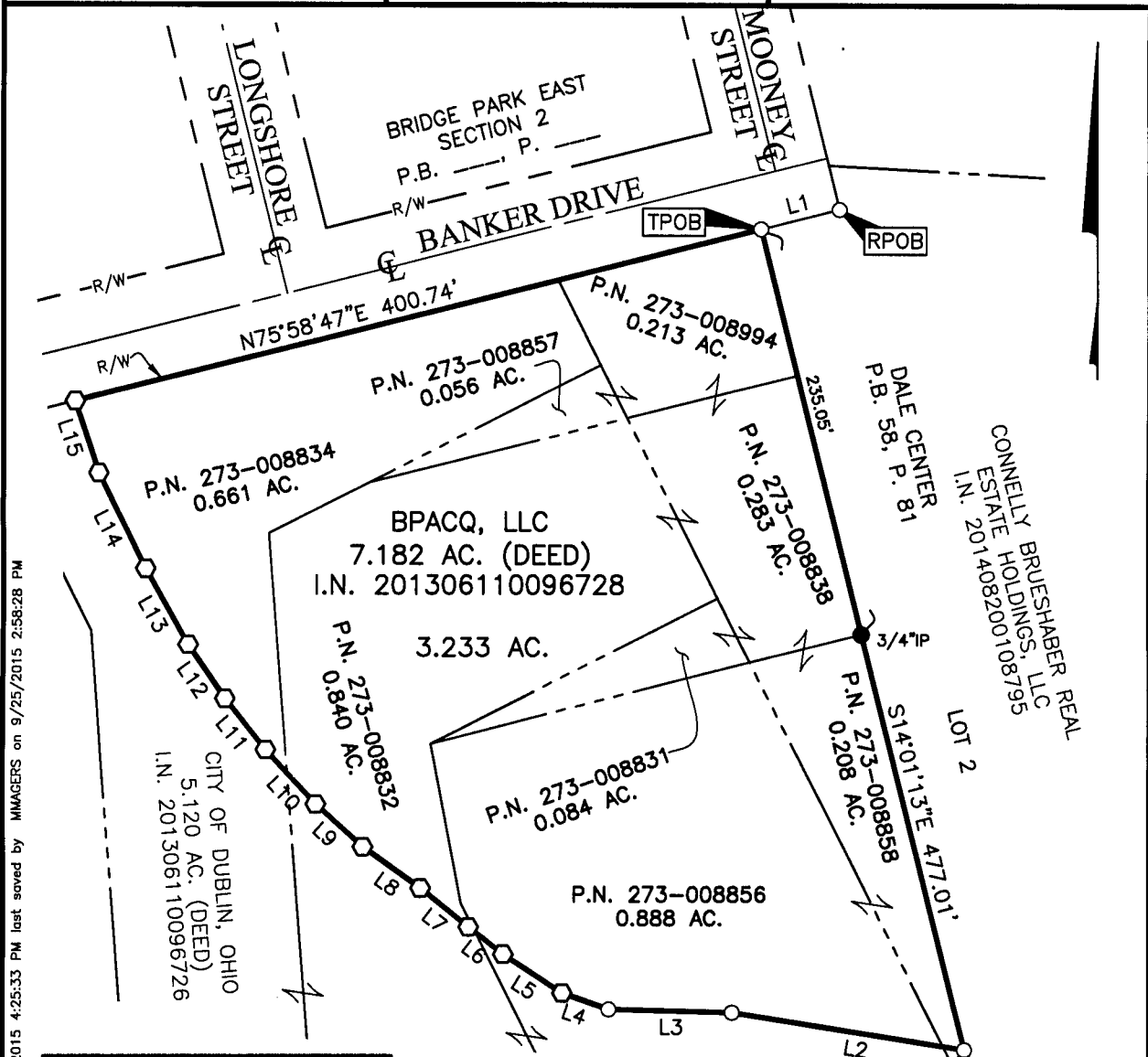
Evans, Mechwart, Hambleton & Tillon, Inc.  
Engineers • Surveyors • Planners • Scientists  
5500 New Albany Road, Columbus, OH 43054  
Phone: 614.775.4500 Toll Free: 888.775.3648  
emht.com

**SURVEY OF ACREAGE PARCEL**  
QUARTER TOWNSHIP 3, TOWNSHIP 2, RANGE 19  
UNITED STATES MILITARY LANDS  
CITY OF DUBLIN, COUNTY OF FRANKLIN, STATE OF OHIO

Date: September 25, 2015

Job No. 2013-1481

Scale: 1" = 100'

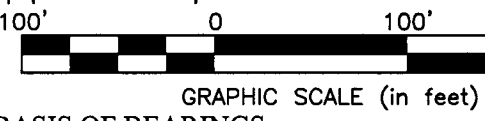


J:\20131481\DWG\04SHEETS\BOUNDARY\20131481-V5-BNDY-03.DWG plotted by MAGER, MARCUS on 9/25/2015 4:25:33 PM last saved by MAGER, MARCUS on 9/25/2015 2:58:28 PM

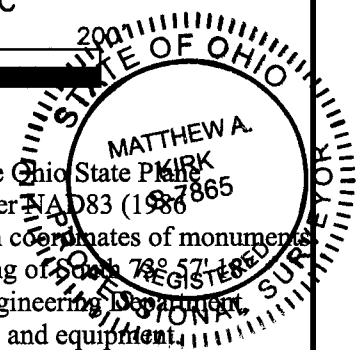
LINE TABLE		
LINE	BEARING	DISTANCE
L1	S75°58'47"W	45.70'
L2	N80°49'26"W	133.00'
L3	N88°33'55"W	70.00'
L4	N70°47'35"W	28.00'
L5	N57°10'46"W	40.00'
L6	N51°51'31"W	25.00'
L7	N51°20'08"W	35.00'
L8	N54°44'38"W	40.00'
L9	N47°43'47"W	36.00'
L10	N42°37'38"W	42.00'
L11	N38°36'19"W	37.00'
L12	N34°21'58"W	37.00'
L13	N29°33'47"W	49.00'
L14	N26°29'52"W	60.00'
L15	N18°15'15"W	42.72'

**SURVEY NOTE:**  
This survey was prepared using documents of record, prior plats of survey, and observed evidence located by an actual field survey.

- = I.P. FND.
  - = I.P. SET
  - = MAG. NAIL FND.
  - = MAG. NAIL SET
- I.P. Set are 13/16" I.D. iron pipe with cap inscribed EMHT INC



**BASIS OF BEARINGS:**  
The Bearings shown hereon are based on the Ohio State Plane Coordinate System (North/South Zone) as per NA D83 (1986 Adjustment). Control for bearings was from coordinates of monuments FRANK 73 and FRANK 74, having a bearing of S 78° 57' 18" E, established by the Franklin County Engineering Department using Global Positioning System procedures and equipment.



By Matthew A. Kirk 25 SEP 15  
Matthew A. Kirk Date  
Professional Surveyor No. 7865