

6-2-8



Evans, Mechwart, Hambleton & Tilton, Inc.
Engineers • Surveyors • Planners • Scientists
5500 New Albany Road, Columbus, OH 43054
Phone: 614.775.4500 Toll Free: 888.775.3648
emht.com

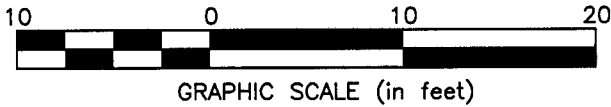
SURVEY OF ACREAGE PARCEL

HALF SECTION 10 (SECTION 8), TOWNSHIP 5, RANGE 22
REFUGEE LANDS
CITY OF COLUMBUS, COUNTY OF FRANKLIN, STATE OF OHIO

Date: August 31, 2015

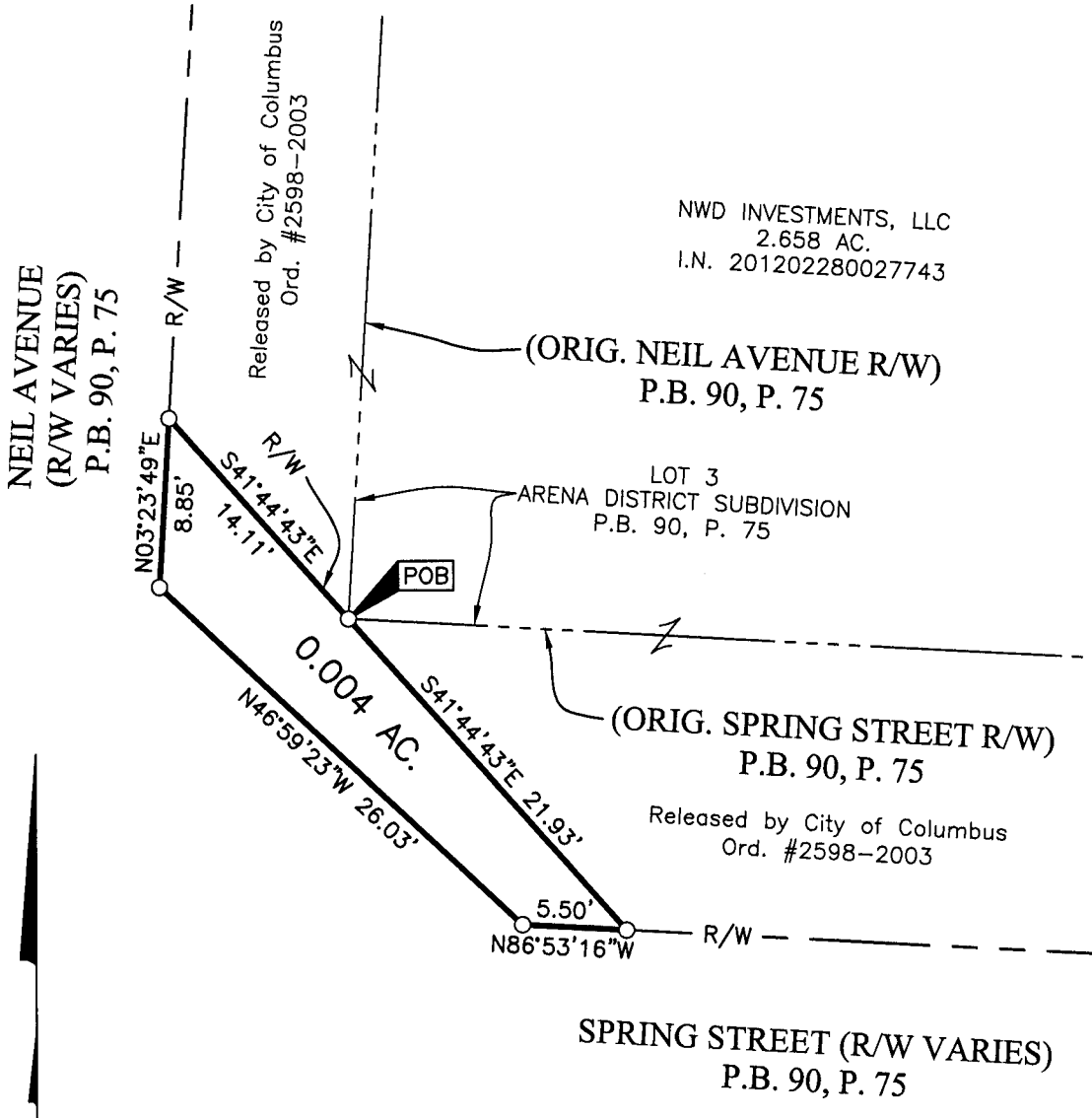
Job No. 2014-1912

Scale: 1" = 10'



○ = I.P. SET
I.P. Set are 13/16" I.D. iron pipe with cap inscribed EMHT INC

J:\2014\1912\DWG\04SHEETS\BOUNDARY\20141912-VS-BNDY-01.DWG plotted by WEBB, TEAGUE on 8/31/2015 2:06:29 PM last saved by WEBB, TEAGUE on 8/31/2015 2:06:25 PM Xrefs:



RECEIVED

AUG 31 2015

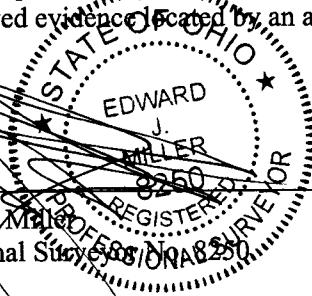
Franklin County Engineer
Dean C. Ringle, P.E., P.S.

BASIS OF BEARINGS:
The Bearings shown hereon are based on the same meridian as the bearings shown on the subdivision plat entitled "Huntington Park" of record in Plat Book 112, Pages 24 and 25, Recorder's Office, Franklin County Ohio. On said plat of record the centerline of Huntington Park Lane has a bearing of North 03°05'07" East.

SURVEY NOTE:
This survey was prepared using documents of record, prior plats of survey, and observed evidence located by an actual field survey.

By

Edward J. Miller
Professional Surveyor



8/31/15

Date