

SEP 18 2015

F-5-F

Franklin County Engineer
Dean C. Ringle, P.E., P.S.



Evans, Mechwart, Hambleton & Tilton, Inc.
Engineers • Surveyors • Planners • Scientists
5500 New Albany Road, Columbus, OH 43054
Phone: 614.775.4500 Toll Free: 888.775.3648
emht.com

SURVEY OF ACREAGE PARCEL

QUARTER TOWNSHIP 3, TOWNSHIP 1, RANGE 18
UNITED STATES MILITARY LANDS
CITY OF COLUMBUS, COUNTY OF FRANKLIN, STATE OF OHIO

Date: August 24, 2015 Job No. 2015-0673 Scale: 1" = 50'

Revised September 17, 2015

BASIS OF BEARINGS:
The bearings shown hereon are based on the Ohio State Plane Coordinate System South Zone per NAD83 (NSRS2007). Control for bearings was from coordinates of monuments RINGLE and COC 4-83 having a bearing of South 34° 13' 31" West, established by the Franklin County Engineering Department, using Global Positioning procedures and equipment.

SURVEY NOTE:
This survey was prepared using documents of record, prior plats of survey, and observed evidence located by an actual field survey.

(A) 20' ALLEY (PUBLIC)
ORD. NO. 657-64
(JUNE 15, 1964)

(B) 20' ALLEY (PUBLIC)
P.B. 7, P. 130

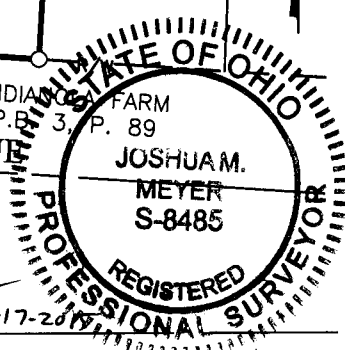
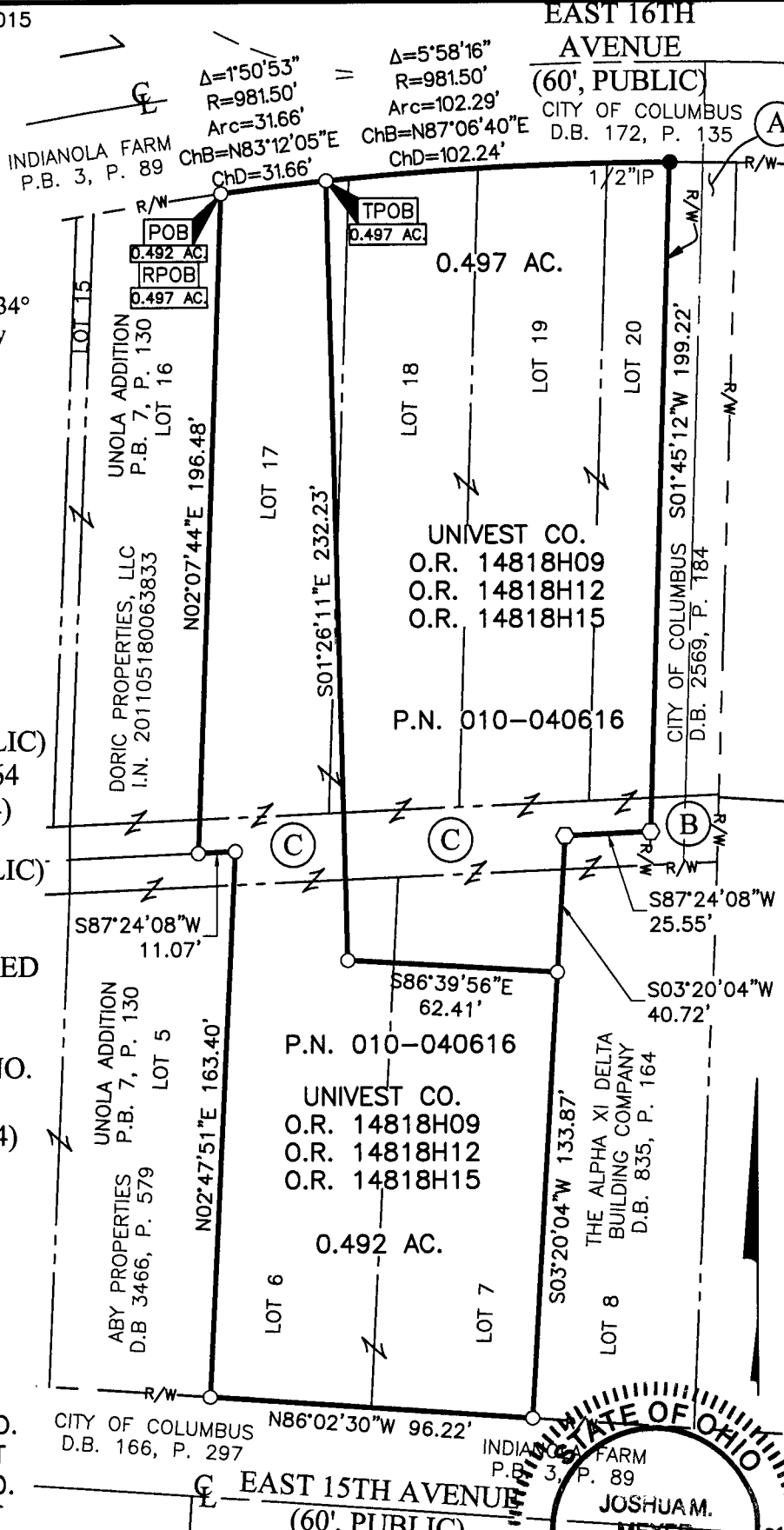
(C) ALLEY VACATED
BY CITY OF
COLUMBUS
ORDINANCE NO.
658-64
(JUNE 15, 1964)

- = STONE FND.
- = MON. FND.
- = I.P. FND.
- = I.P. SET
- = MAG. NAIL FND.
- = MAG. NAIL SET
- ▲ = R.R. SPK. FND.
- △ = R.R. SPK. SET
- ◆ = P.K. NAIL FND.

I.P. Set are 13/16" I.D. iron pipe with cap inscribed EMHT INC



GRAPHIC SCALE (in feet)



By *J.M. Meyer* Date 9-17-2015
Joshua M. Meyer
Professional Surveyor No. 8485

J:\20150673\DWG\04SHEETS\BOUNDARY\20150673-VS-BNDY-01.DWG plotted by MAGERS, MARCUS on 9/17/2015 2:49:57 PM last saved by MMAGERS on 8/24/2015 1:59:22 PM