

Plat of Survey Guider Surveying, Inc.

State of Ohio, Franklin County, City of Worthington,
Quarter Twnshp 3, Twnsp 2, Range 18, USML
Partition Plat of W.F. Griswold v. H. Lawrence, et al
Franklin Co. Court of Common Pleas, Complete Rec. 58, pg.150

ERJV Properties, LLC 1.029 ac. I.N. 20130303290052567

RECEIVED

AUG 26 2015

Franklin County Engineer
Dean C. Ringle, P.E., P.S.

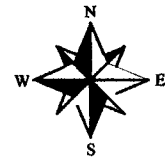
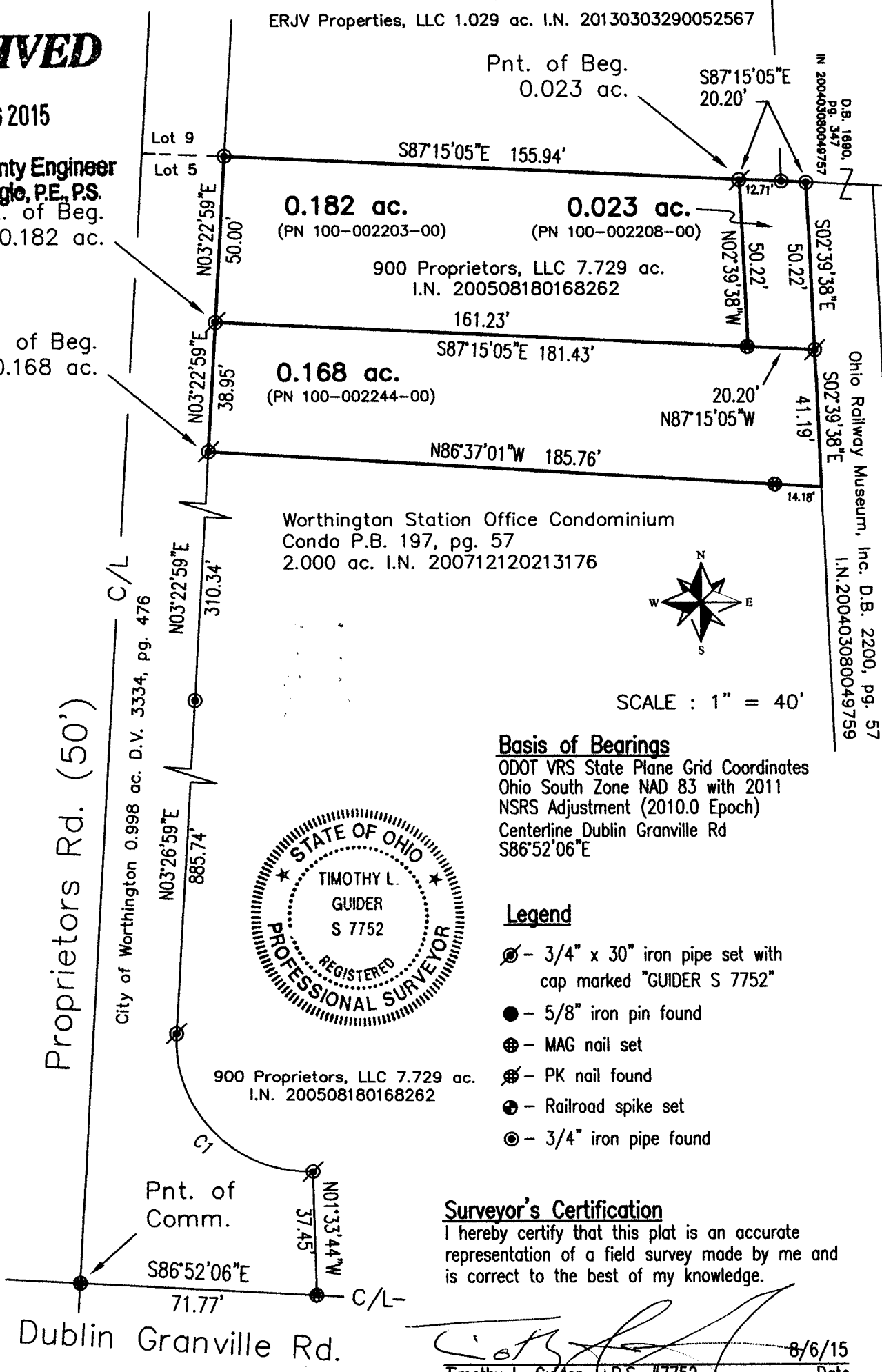
Pnt. of Beg.
0.182 ac.

Pnt. of Beg.
0.168 ac.

CURVE	RADIUS	ARC LENGTH	CHORD LENGTH	CHORD BEARING	DELTA ANGLE
C1	40.00'	66.33'	58.99'	N 44°03'23" W	95°00'53"

Proprietors Rd. (50')

C/L
City of Worthington 0.998 ac. D.V. 3334, pg. 476



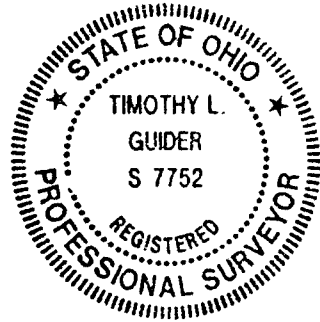
SCALE : 1" = 40'

Basis of Bearings

ODOT VRS State Plane Grid Coordinates
Ohio South Zone NAD 83 with 2011
NSRS Adjustment (2010.0 Epoch)
Centerline Dublin Granville Rd
 $S86^{\circ}52'06''E$

Legend

- ⊗ - 3/4" x 30" iron pipe set with cap marked "GUIDER S 7752"
- - 5/8" iron pin found
- ⊕ - MAG nail set
- ⊗ - PK nail found
- ⊕ - Railroad spike set
- ⊙ - 3/4" iron pipe found



Surveyor's Certification

I hereby certify that this plat is an accurate representation of a field survey made by me and is correct to the best of my knowledge.

Timothy L. Guider

Timothy L. Guider R.S. #7752
Guider Surveying, Inc.
19550 Delaware County Line Road
Marysville, Ohio 43040
(740)-666-8902

8/6/15
Date

Scale in Feet

