

SYMBOL LEGEND

- I.P.F. IRON PIN FOUND
- ⊙ P.F. IRON PIPE FOUND
- I.P.S. IRON PIN SET, 5/8" DIAMETER BY 30" LONG REBAR WITH "CW DESIGN GROUP" CAP

BASIS OF BEARINGS

THE BEARINGS SHOWN ON THIS PLAT ARE BASED ON THE OHIO STATE PLANE COORDINATE SYSTEM, SOUTH ZONE, NAD83 (2011). THE PORTION OF THE EAST RIGHT OF WAY OF HUBER ALLEY, HAVING A BEARING OF NORTH 04°20'53" WEST AND MONUMENTED AS SHOWN HEREON, IS DESIGNATED THE 'BASIS OF BEARING' FOR THIS PLAT.

REFERENCE DOCUMENT:
THE BOUNDARY SURVEY IS BASED ON PLAT BOOK 3, PAGE 380 AND PLAT BOOK 4, PAGE 87.

CITY OF COLUMBUS
COUNTY OF FRANKLIN
STATE OF OHIO

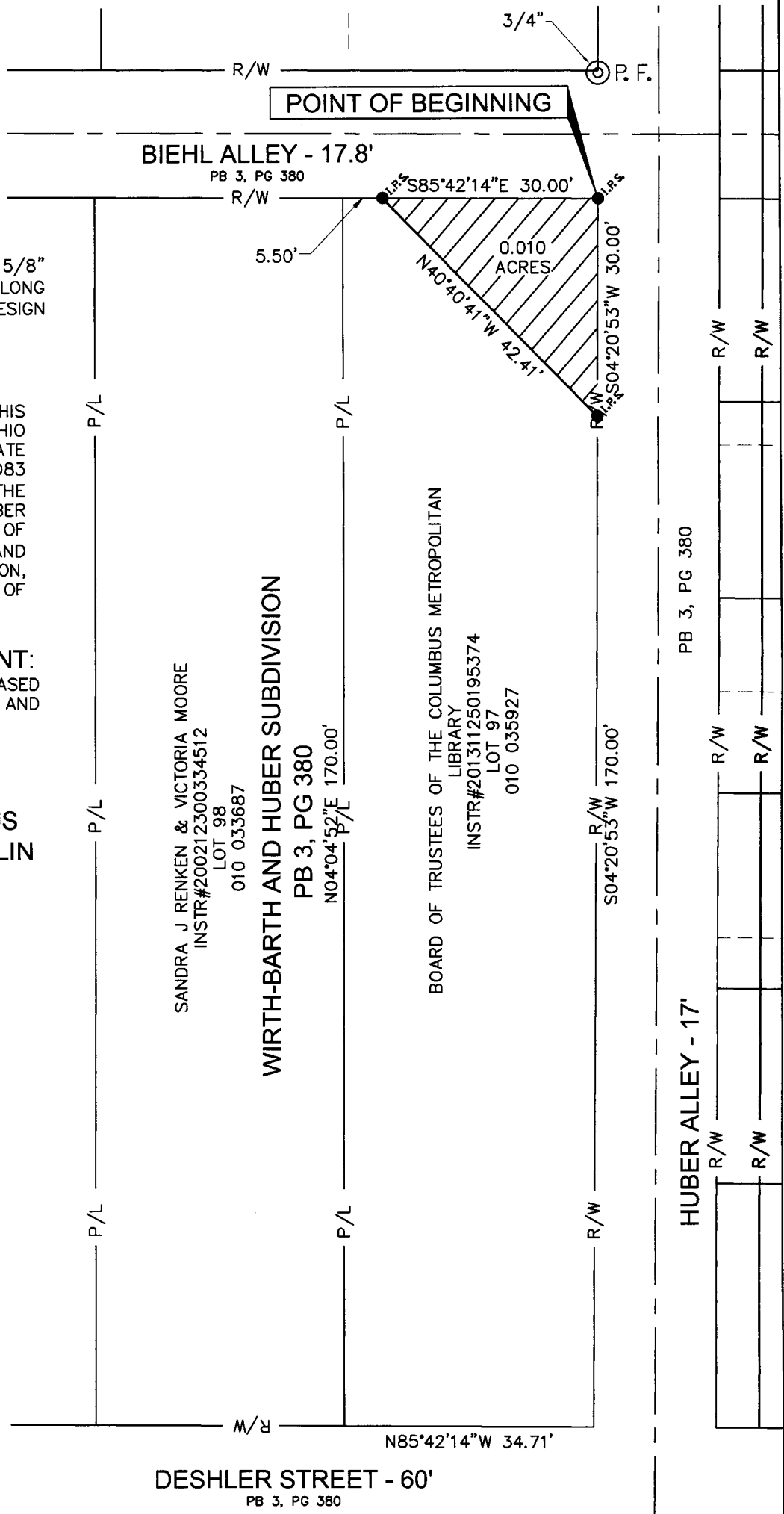
RECEIVED

AUG 27 2015

Franklin County Engineer
Dean C. Ringle, P.E., P.S.



[cw design group] D:\CWDG\Project\2014\140021\Drawing\RW02.dwg August 04, 2015 10:23am



Charles A. Wagner 08/04/2015
 CHARLES A. WAGNER, P.S. S-8091 DATE

CW Design Group
ENGINEERING SURVEYING
PHONE: 614-846-9279
972 Linkfield Drive
Worthington, Ohio 43085

RIGHT OF WAY DEDICATION

14-0021

