

K-S-C



Evans, Mechwart, Hambleton & Tilton, Inc.
Engineers • Surveyors • Planners • Scientists
5500 New Albany Road, Columbus, OH 43054
Phone: 614.775.4500 Toll Free: 888.775.3648
emht.com

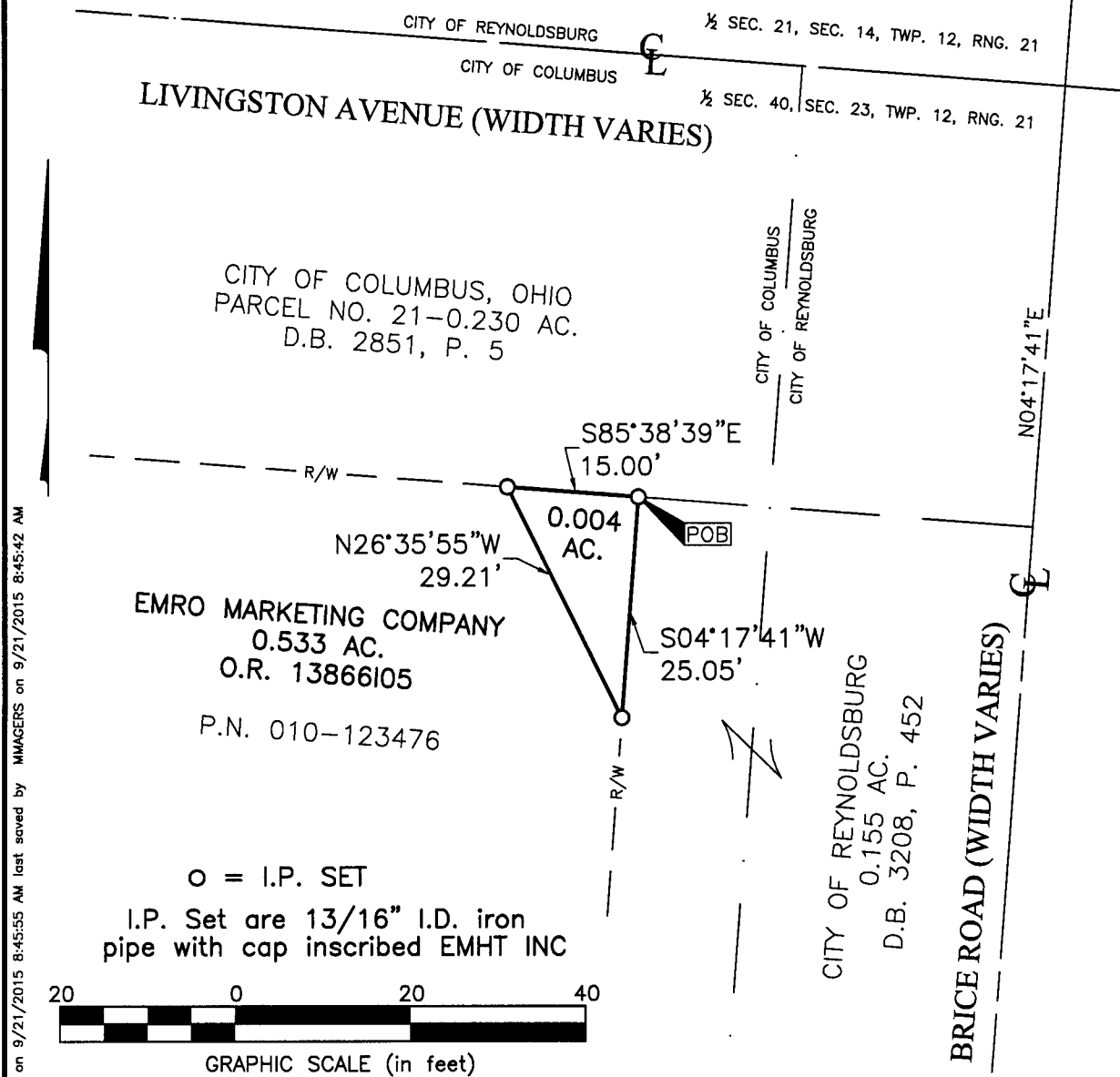
SURVEY OF ACREAGE PARCEL

HALF SECTION 40, SECTION 23, TOWNSHIP 12, RANGE 21
REFUGEE LANDS
CITY OF COLUMBUS, COUNTY OF FRANKLIN, STATE OF OHIO

Date: September 21, 2015

Job No. 2013-0464

Scale: 1" = 20'



J:\20130464\DWG\04SHEET\BOUNDARY\20130464-VS-BNDY-RWAY-02.DWG plotted by MAGER, MARCUS on 9/21/2015 8:45:42 AM
Xrefs: FRA-ROWDROPS.DWG

○ = I.P. SET
I.P. Set are 13/16" I.D. iron pipe with cap inscribed EMHT INC

SURVEY NOTE:

This survey was prepared using documents of record, prior plats of survey, and observed evidence located by an actual field survey.

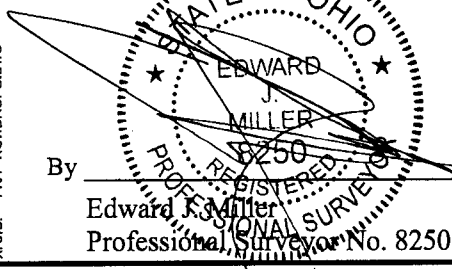
BASIS OF BEARINGS:

The bearings shown on this plat are based on the Ohio State Plane Coordinate System, South Zone, NAD83 (NSRS 2007). Said bearings originated from a field traverse which was tied (referenced) to said coordinate system by GPS observations of Franklin County monuments FRANK 145 and FRANK 45. The portion of the centerline of Brice Road, having a bearing of North 04° 17' 41" East as shown hereon, is designated the "basis of bearing" for this survey.

RECEIVED

SEP 21 2015

Franklin County Engineer
Dean C. Ringle, P.E., P.S.

By  Edward J. Miller
Professional Surveyor No. 8250

9/21/15
Date