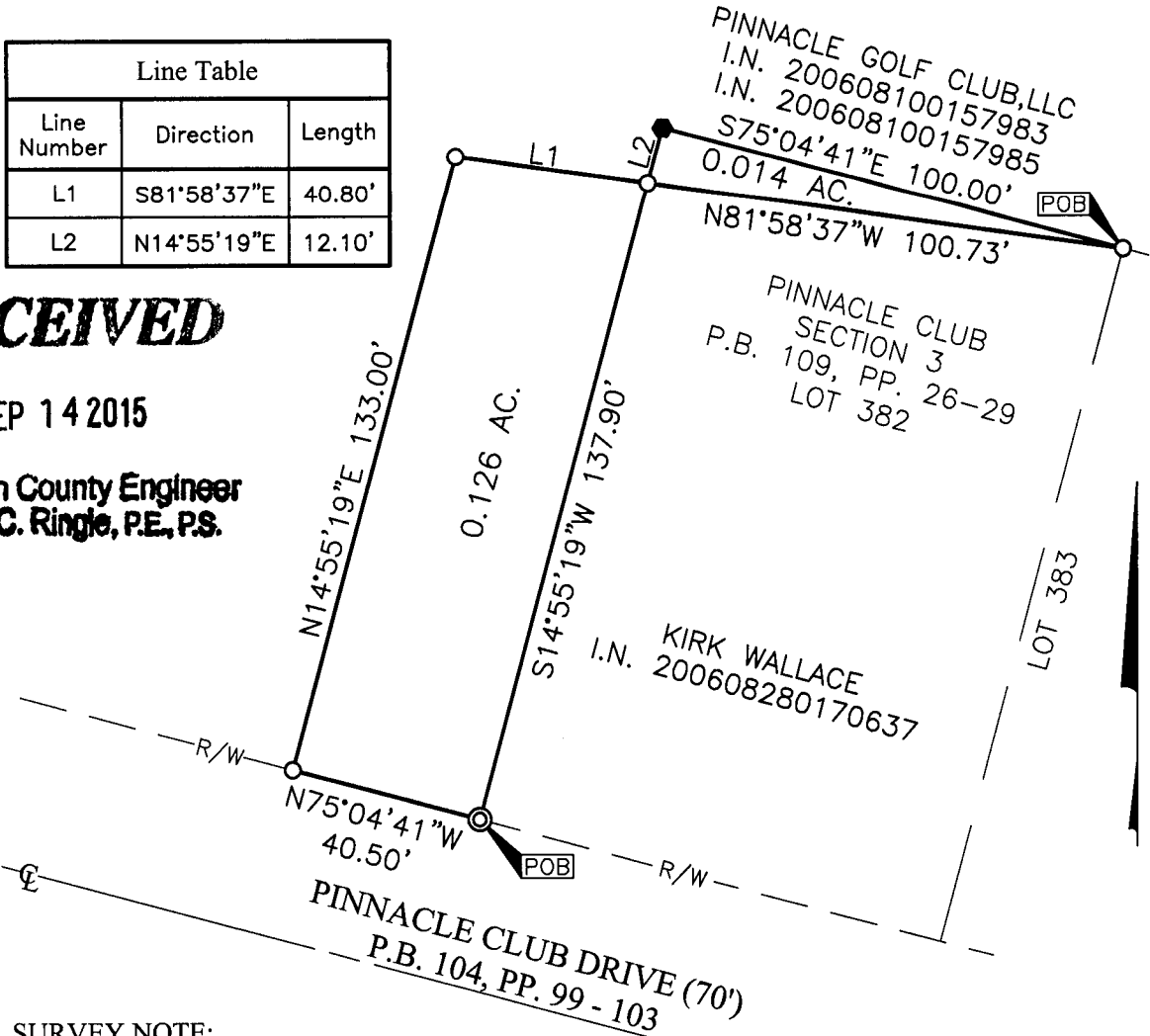




SURVEY OF ACREAGE PARCELS
 VIRGINIA MILITARY SURVEY NO. 478
 CITY OF GROVE CITY, COUNTY OF FRANKLIN, STATE OF OHIO

Date: July 9, 2014 Job No. 2013-1127 Scale: 1" = 40'

Line Table		
Line Number	Direction	Length
L1	S81°58'37"E	40.80'
L2	N14°55'19"E	12.10'



RECEIVED

SEP 14 2015

Franklin County Engineer
 Dean C. Ringle, P.E., P.S.

O:\2013\20131127\DWG\04SHEETS\BOUNDARY\20131127-NS-BNDY-02.DWG plotted by KIRK, MATTHEW on 9/11/2015 9:56:48 AM last saved by JMASTON on 7/9/2014 11:40:28 AM Xref:

SURVEY NOTE:
 This survey was prepared using documents of record, prior plats of survey, and observed evidence located by an actual field survey in July, 2013.

BASIS OF BEARINGS:
 The Bearings shown hereon are based on the north right-of-way line of Pinnacle Club Drive, as shown on that plat entitled "Pinnacle Club Section 3" of record in Plat Book 109, Pages 26-29, Recorder's Office, Franklin County, Ohio, having a bearing of North 75° 04' 41" West.



By Matthew A. Kirk Date 9 July 14
 Matthew A. Kirk Professional Surveyor No. 7865

- = I.P. SET
- = MAG. NAIL FND.
- ⊙ = PERMANENT MARKER SET

I.P. Set are 13/16" I.D. iron pipe with cap inscribed EMHT INC. Permanent Marker Set is a one-inch solid iron pin with a punched top.

