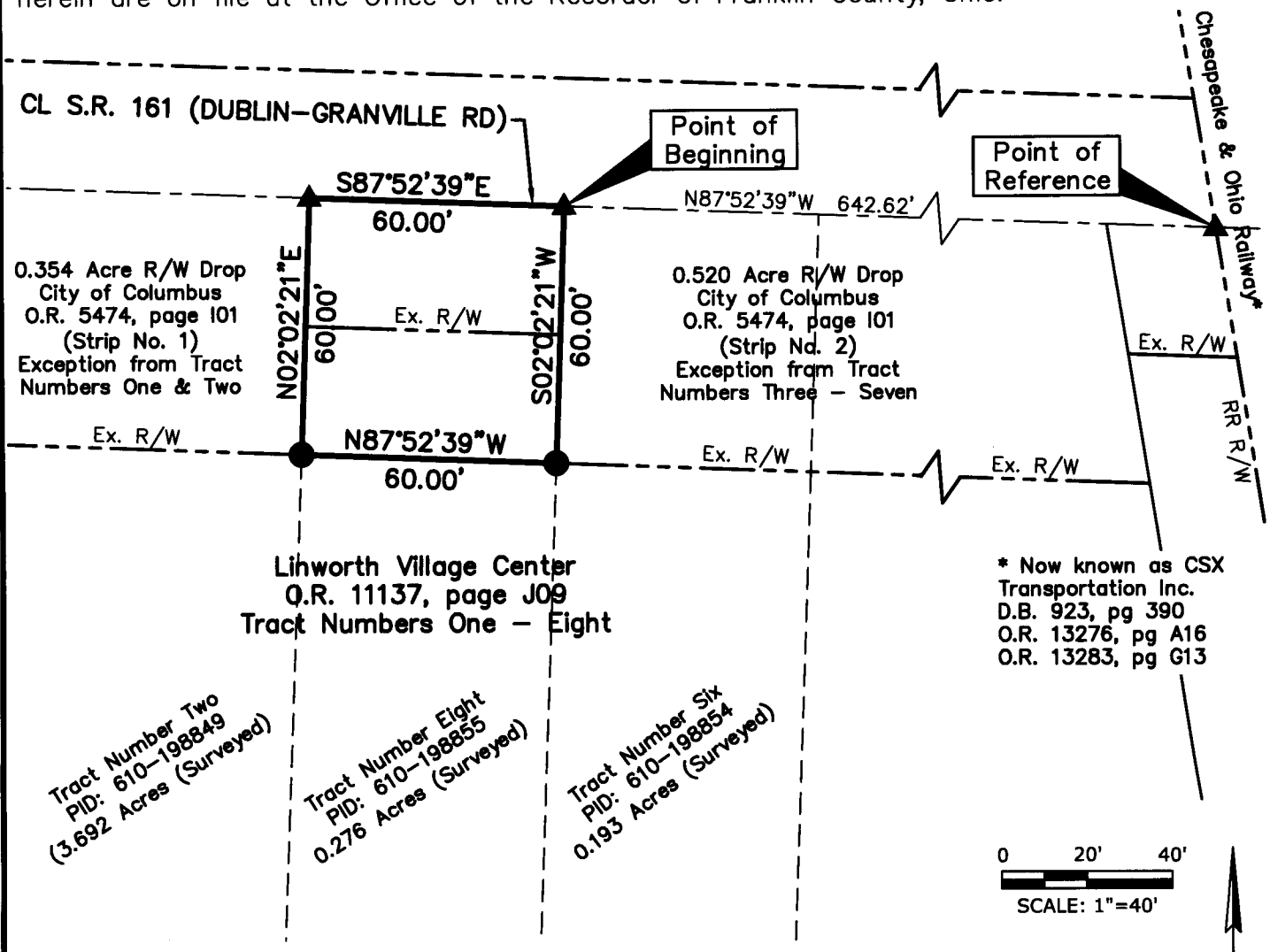


Situated in the State of Ohio, County of Franklin, City of Columbus, being located in Quarter Township 4, Township 2, Range 19, United States Military Lands, being a part of that 43 rod (0.193 acre) tract described as Tract Number Eight in a deed to Linworth Village Center, of record in Official Record Volume 11137, page J09, all records referenced herein are on file at the Office of the Recorder of Franklin County, Ohio.



0.354 Acre R/W Drop
City of Columbus
O.R. 5474, page 101
(Strip No. 1)
Exception from Tract
Numbers One & Two

0.520 Acre R/W Drop
City of Columbus
O.R. 5474, page 101
(Strip No. 2)
Exception from Tract
Numbers Three - Seven

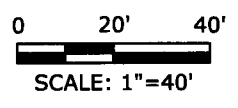
Lihworth Village Center
O.R. 11137, page J09
Tract Numbers One - Eight

* Now known as CSX
Transportation Inc.
D.B. 923, pg 390
O.R. 13276, pg A16
O.R. 13283, pg G13

Tract Number Two
PID: 610-198849
(3.692 Acres (Surveyed))

Tract Number Eight
PID: 610-198855
(0.276 Acres (Surveyed))

Tract Number Six
PID: 610-198854
(0.193 Acres (Surveyed))



Right-of-Way Take Area	
Gross R/W Take Area:	0.083 Ac. (3,600 SF)
Ex. PRO Area in take:	0.0415 Ac. (1,800 SF)
Net R/W Take Area:	0.0415 Ac. (1,800 SF)

Legend

- ▲ MAG Nail Set
- Iron Pin Set w/cap stamped "ASI-PS 8438"

Basis of Bearings

Bearings shown hereon are based on the bearing of South 87 degrees 52 minutes 39 seconds East for the centerline of State Route 161 (Dublin-Granville Road), which is referenced to the Ohio State Plane Coordinate System (South Zone) and the North American Datum of 1983 (NSRS 2007) as established utilizing a GPS survey originating on Franklin County Engineer survey control monuments "Frank 74" and Frank 174".

This exhibit of a right-of-way drop area is based on an actual field survey of the premises performed in August 2012 by American Structurepoint, Inc. and is true and correct to the best of my knowledge.

American Structurepoint, Inc.

Brian P. Bingham

Brian P. Bingham
Registered Professional Surveyor No. 8438

9/18/2012
Date



RIGHT-OF-WAY DROP

AMERICAN
STRUCTUREPOINT
INC.

2550 CORPORATE EXCHANGE DRIVE
SUITE 300
COLUMBUS, OH 43231
TEL 614:901.2235 FAX 614.901.2236
www.structurepoint.com

DATE: 09-17-2012
DRAWN BY: BPB
JOB NO. 2012.01193

SHEET NO.
1
of
1

PLOT SCALE: 1:2,5849 EDIT DATE: 9/17/12 - 10:22 AM EDITED BY: BINGHAM DRAWING FILE: o:\2012\01193\DRAWINGS\SURVE\201201193.SV.2012-09-17.RW DROP.DWG