

RECEIVED

SEP 14 2015

Franklin County Engineer  
Dean C. Ringle, P.E., P.S.

M-1-A



Evans, Mechwart, Hambleton & Tilton, Inc.  
Engineers • Surveyors • Planners • Scientists  
5500 New Albany Road, Columbus, OH 43054  
Phone: 614.775.4500 Toll Free: 888.775.3648  
emht.com

# RIGHT OF WAY ACQUISITION

VIRGINIA MILITARY SURVEY NO. 1383

TOWNSHIP OF JACKSON, COUNTY OF FRANKLIN, STATE OF OHIO

Date: September 8, 2015

Job No. 2014-0220

Scale: 1" = 30'

### BASIS OF BEARINGS:

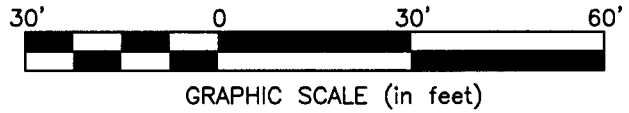
There Bearings shown hereon are based on the Ohio State Plane Coordinate System South Zone as per NAD83 (NSRS 2007 Adjustment). Control for bearings was from coordinates of monuments FCGS 0024 RESET and FCGS 5539, having a bearing of South 08° 51' 44" West, established by the Franklin County Engineering Department, using Global Positioning System procedures and equipment.

### SURVEY NOTE:

This survey was prepared using documents of record, prior plats of survey, and observed evidence located by an actual field survey.

### REFERENCE NOTE:

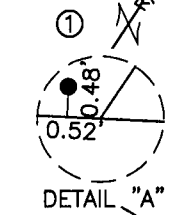
Right-of-way Plan titled S.H. 50 Sec. H-2 & H-3 (PT) dated 1932.



Xrefs: U:\20140220\DWG\04SHEETS\EASEMENTS\20140220-VS-RWAY-ESMT-01.DWG plotted by MAGER, MARCUS on 9/8/2015 3:51:40 PM last saved by MIMAGERS on 4/14/2015 8:05:52 AM



DETAIL "B" NOT TO SCALE

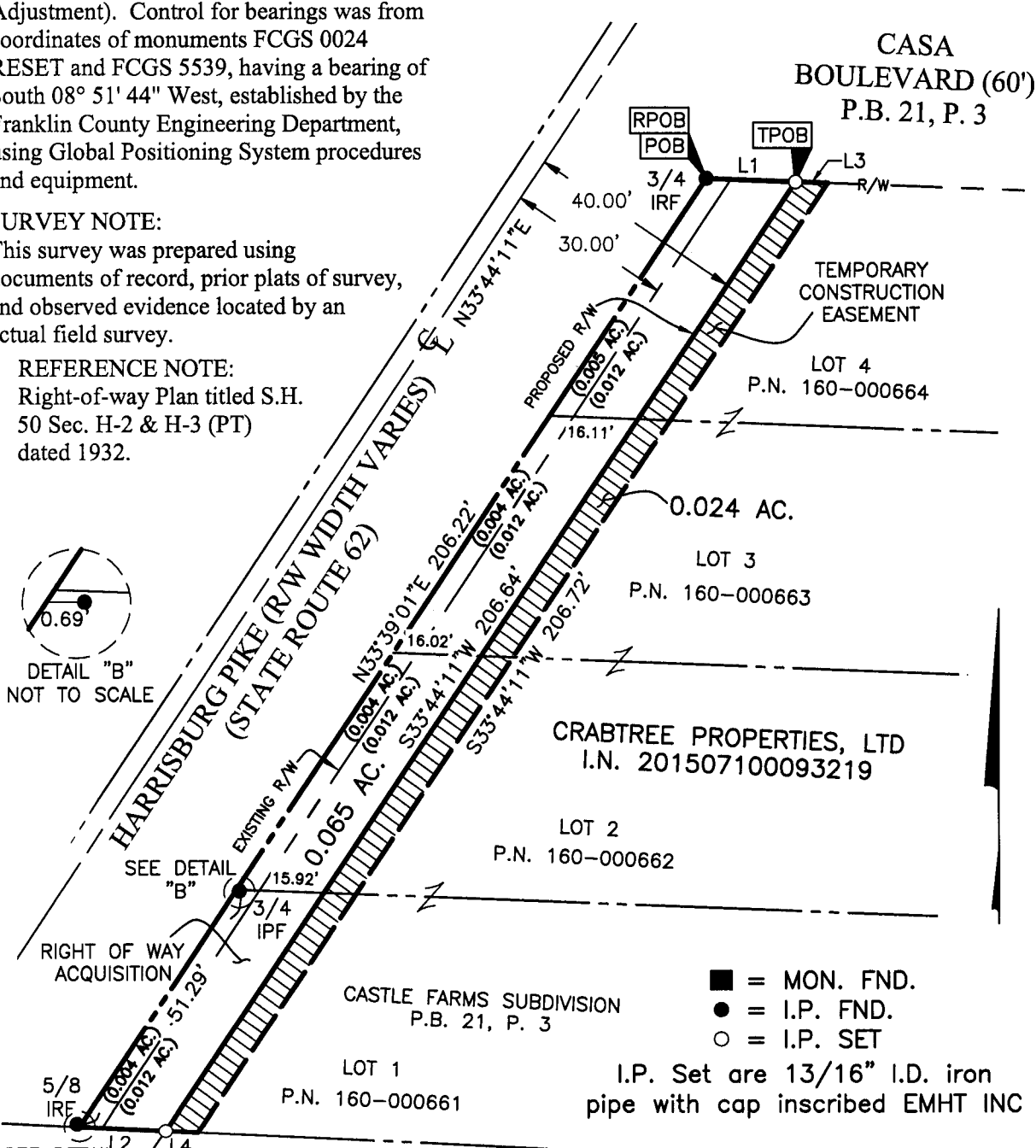


DETAIL "A" NOT TO SCALE

By Edward J. Miller  
Professional Surveyor No. 8250

Date 9/7/15

CASA BOULEVARD (60')  
P.B. 21, P. 3



- = MON. FND.
- = I.P. FND.
- = I.P. SET

I.P. Set are 13/16" I.D. iron pipe with cap inscribed EMHT INC

① STATE OF OHIO PAR. NO. 83  
HIGHWAY EASEMENT D.B.  
1000, P. 273

LINE TABLE		
LINE	BEARING	DISTANCE
L1	S87°46'27"E	16.20'
L2	N87°04'07"W	15.72'
L3	S87°46'27"E	5.86'
L4	N87°04'07"W	5.82'