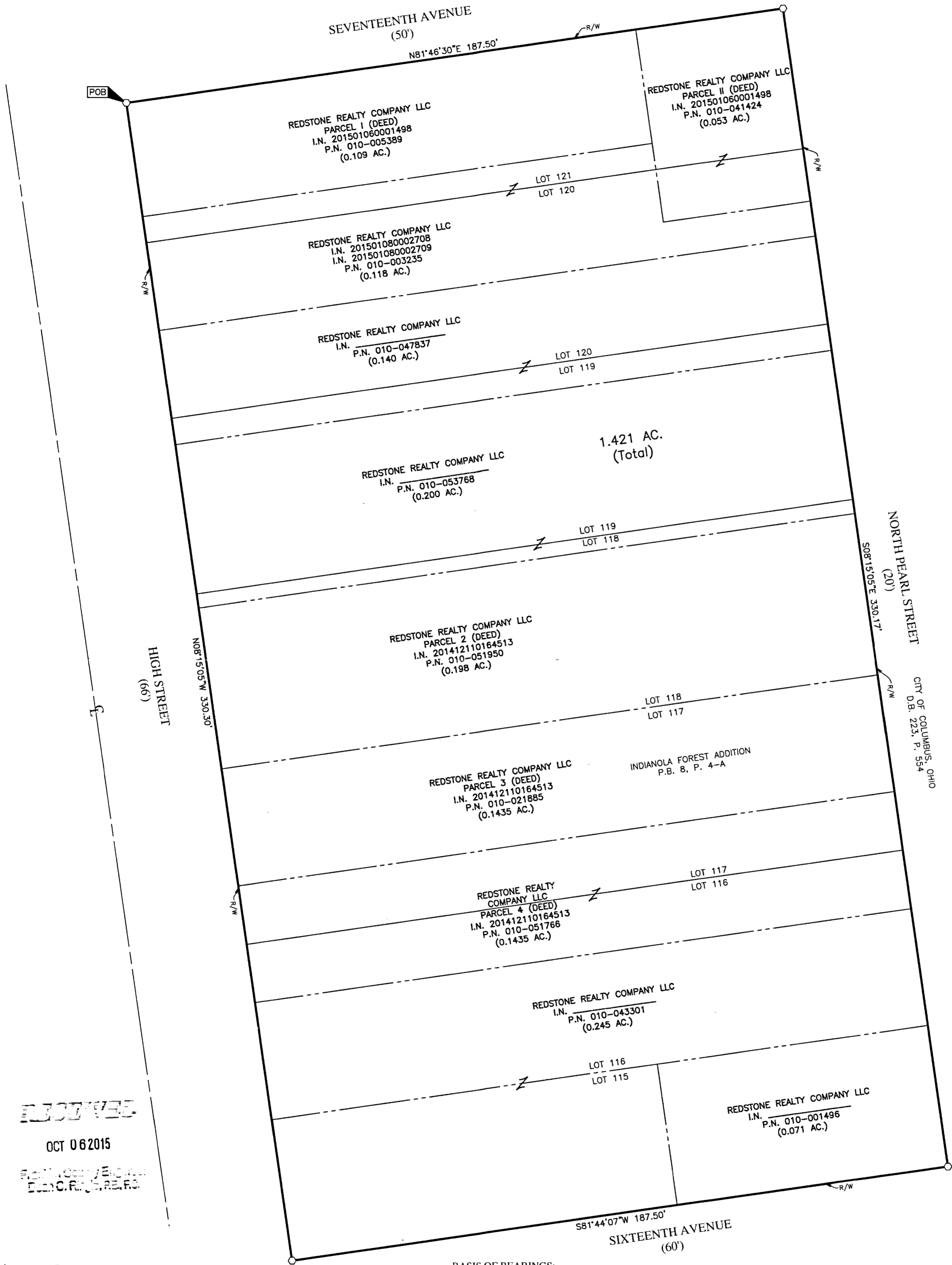


# SURVEY OF ACREAGE PARCEL

## QUARTER TOWNSHIP 3, TOWNSHIP 1, RANGE 18

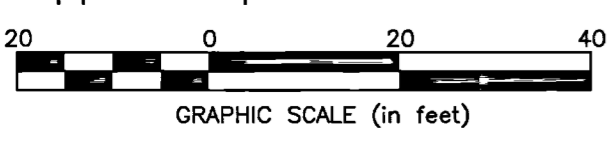
### UNITED STATES MILITARY LANDS

### CITY OF COLUMBUS, COUNTY OF FRANKLIN, STATE OF OHIO



**RECEIVED**  
OCT 06 2015  
EMHT INC  
1500 New Albany Road, Columbus, OH 43054

- = STONE FND.
  - = MON. FND.
  - = I.P. FND.
  - = I.P. SET
  - = MAG. NAIL FND.
  - = MAG. NAIL SET
  - ▲ = R.R. SPK. FND.
  - △ = R.R. SPK. SET
  - ◆ = P.K. NAIL FND.
- I.P. Set are 13/16" I.D. iron pipe with cap inscribed EMHT INC



**BASIS OF BEARINGS:**  
The bearings shown hereon are based on the Ohio State Plane Coordinate System South Zone per NAD83 (NSRS2007). Control for bearings was from coordinates of monuments RINGLE and COC 4-83 having a bearing of South 34° 13' 31" West, established by the Franklin County Engineering Department, using Global Positioning procedures and equipment.

**SURVEY NOTE:**  
This survey was prepared using documents of record, prior plats of survey, and observed evidence located by an actual field survey.

By Joshua M. Meyer 10-5-2015  
Professional Surveyor No. 8485 Date

 Evans, Mechwart, Hambleton & Tilton, Inc. Engineers • Surveyors • Planners • Scientists 5500 New Albany Road, Columbus, OH 43054 Phone: 614.775.4500 Toll Free: 888.775.3648 emht.com	Date: October 5, 2015	
	Scale: 1" = 20'	
	Job No: 2015-1407	
	Sheet: 1 of 1	
<b>REVISIONS</b>		
MARK	DATE	DESCRIPTION