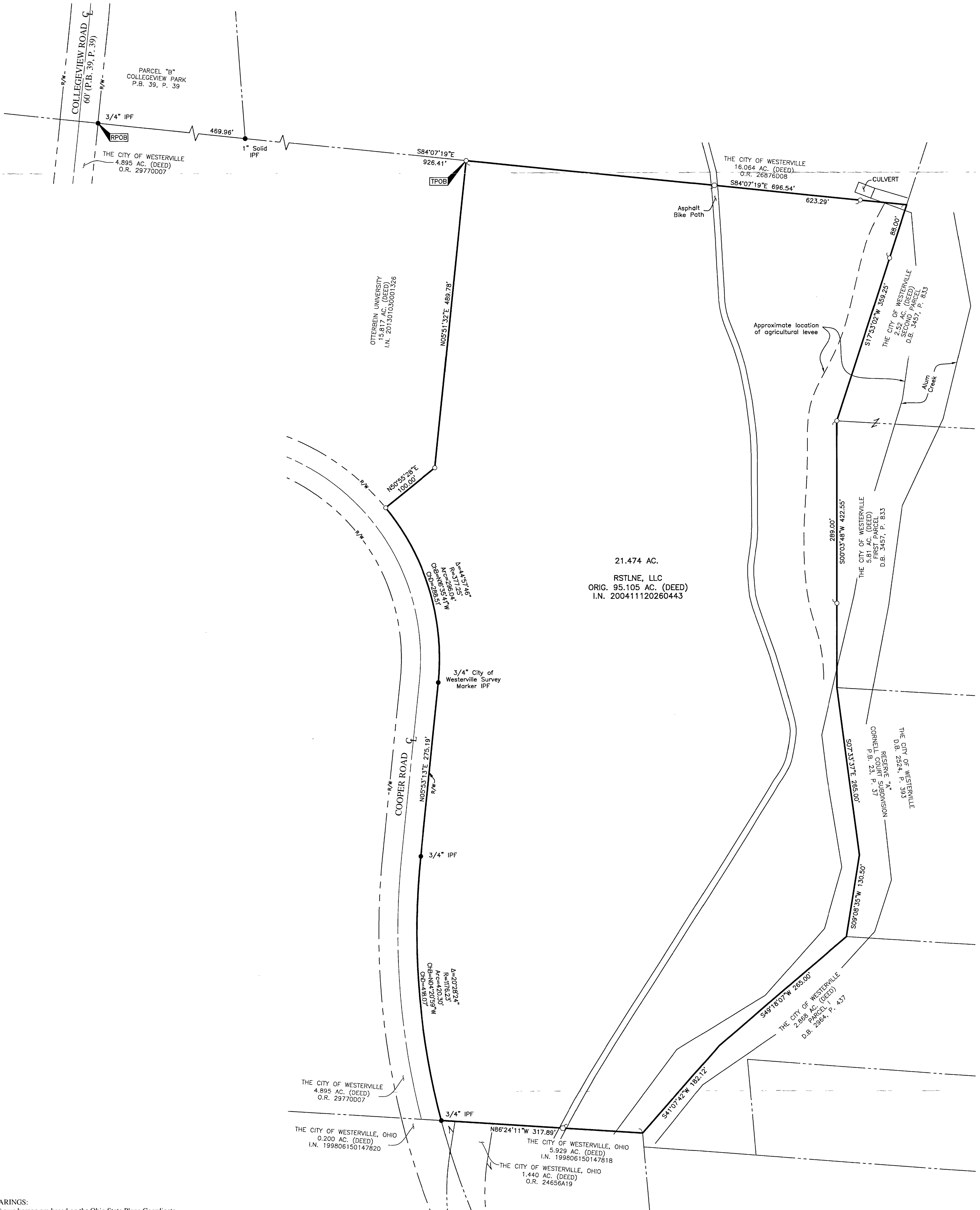


SURVEY OF ACREAGE PARCEL

QUARTER TOWNSHIP 2, TOWNSHIP 2, RANGE 17

UNITED STATES MILITARY LANDS

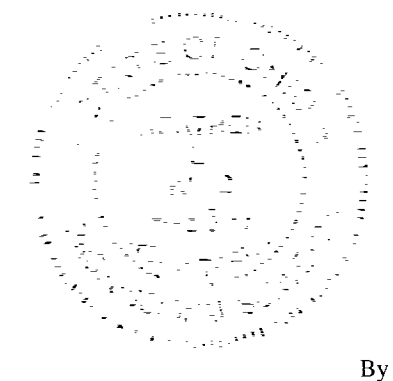
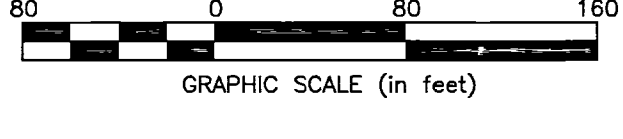
CITY OF WESTERVILLE, COUNTY OF FRANKLIN, STATE OF OHIO



BASIS OF BEARINGS:
The Bearings shown hereon are based on the Ohio State Plane Coordinate System South Zone as per NAD83 (1986 Adjustment). Control for bearings was from coordinates of monuments Frank 85 and West 17, established by the Franklin County Engineering Department, using Global Positioning System procedures and equipment.

SURVEY NOTE:
This survey was prepared using documents of record, prior plats of survey, and observed evidence located by an actual field survey.

- = STONE FND.
 - = MON. FND.
 - = I.P. FND.
 - = I.P. SET
 - = MAG. NAIL FND.
 - = MAG. NAIL SET
 - ▲ = R.R. SPK. FND.
 - △ = R.R. SPK. SET
 - = P.K. NAIL FND.
- I.P. Set are 13/16" I.D. iron pipe with cap inscribed EMHT INC



By *Heather L. King* 7/30/15
Heather L. King
Professional Surveyor No. 8307 Date

JUL 31 2015
Franklin County Engineer
DAN O. RAGO, P.E., P.S.

EMHT		Date: July 22, 2015
Evans, Machiwart, Hamblen & Rifon, Inc. Engineers • Surveyors • Planners • Scientists 5500 New Albany Road, Columbus, OH 43054 Phone: 614.775.4500 Fax: 614.775.3448 emht.com		Scale: 1" = 80'
		Job No: 2015-0759
		Sheet: 1 of 1
REVISIONS		
MARK	DATE	DESCRIPTION