

RECEIVED

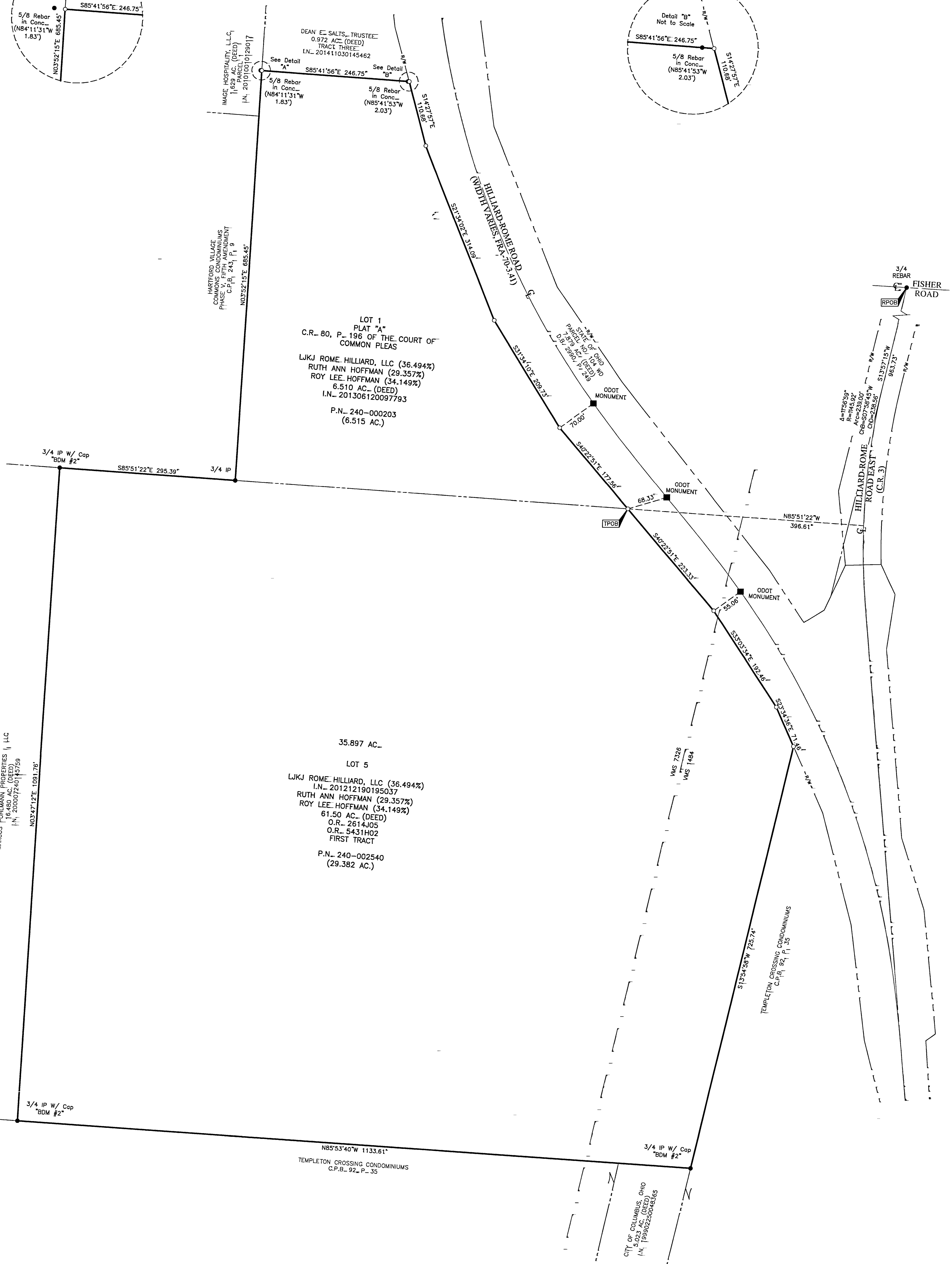
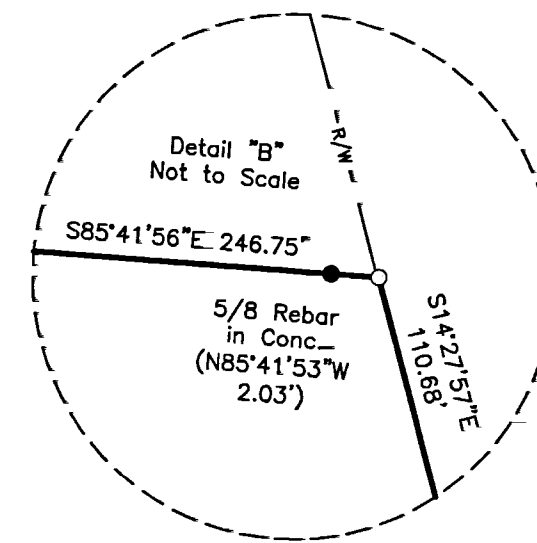
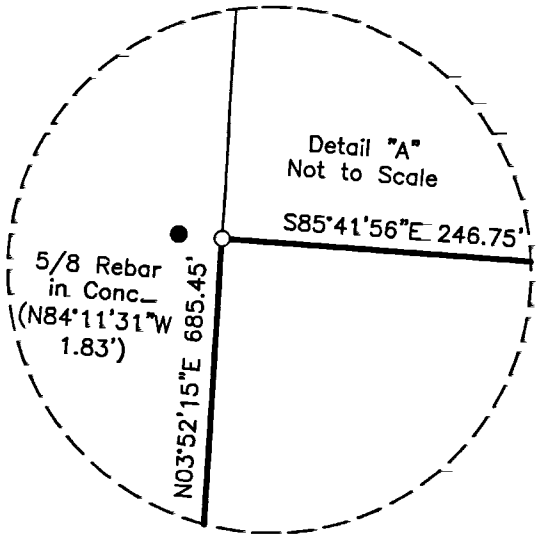
SEP 18 2015

Franklin County Engineer
Dana G. Ruppel, P.E., P.S.

SURVEY OF ACREAGE PARCEL

VIRGINIA MILITARY SURVEY NOS. 7326 & 1484

TOWNSHIP OF PRAIRIE, COUNTY OF FRANKLIN, STATE OF OHIO

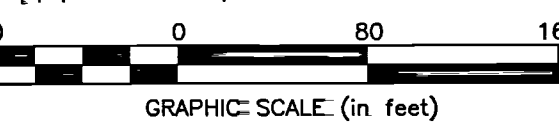


MARCUS POHLMANN PROPERTIES, LLC
16.480 AC. (DEED)
I.N. 200807241145759

35.897 AC.
LOT 5
LJKJ ROME HILLIARD, LLC (36.494%)
I.N. 201212190195037
RUTH ANN HOFFMAN (29.357%)
ROY LEE HOFFMAN (34.149%)
61.50 AC. (DEED)
O.R. 2614J05
O.R. 5431H02
FIRST TRACT
P.N. 240-002540
(29.382 AC.)

LOT 1
PLAT "A"
C.R. 80, P. 196 OF THE COURT OF
COMMON PLEAS
LJKJ ROME HILLIARD, LLC (36.494%)
RUTH ANN HOFFMAN (29.357%)
ROY LEE HOFFMAN (34.149%)
6.510 AC. (DEED)
I.N. 201306120097793
P.N. 240-000203
(6.515 AC.)

- = STONE FND.
 - = MON. FND.
 - = I.P. FND.
 - = I.P. SET
 - = MAG. NAIL FND.
 - = MAG. NAIL SET
 - ▲ = R.R. SPK. FND.
 - △ = R.R. SPK. SET
 - = P.K. NAIL FND.
 - = P.K. NAIL SET
- I.P. Set are 13/16" I.D. iron pipe with cap inscribed EMHT INC



SURVEY NOTE:
This survey was prepared using documents of record, prior plats of survey, and observed evidence located by an actual field survey.

BASIS OF BEARINGS:
The Bearings shown hereon are based on the Ohio State Plane Coordinate System South Zone as per NAD83 (1986 Adjustment). Control for bearings was from coordinates of monuments FRANK 39 and FRANK 139, having a bearing of North 89° 56' 09" East, established by the Franklin County Engineering Department, using Global Positioning System procedures and equipment.



By Matthew A. Kirk Date 16 SEP 15
Matthew A. Kirk
Professional Surveyor No. 7865

EMHT Evans, Mechwart, Hambleton & Tilton, Inc. Engineers • Surveyors • Planners • Scientists 550 New Albany Road, Columbus, OH 43254 Phone: 614.775.4500 Toll Free: 888.775.3648 emht.com	Date: September 16, 2015
	Scale: 1" = 80'
	Job No: 2015-1178
	Sheet: 1 of 1

REVISIONS		
MARK	DATE	DESCRIPTION