

EXHIBIT "B"

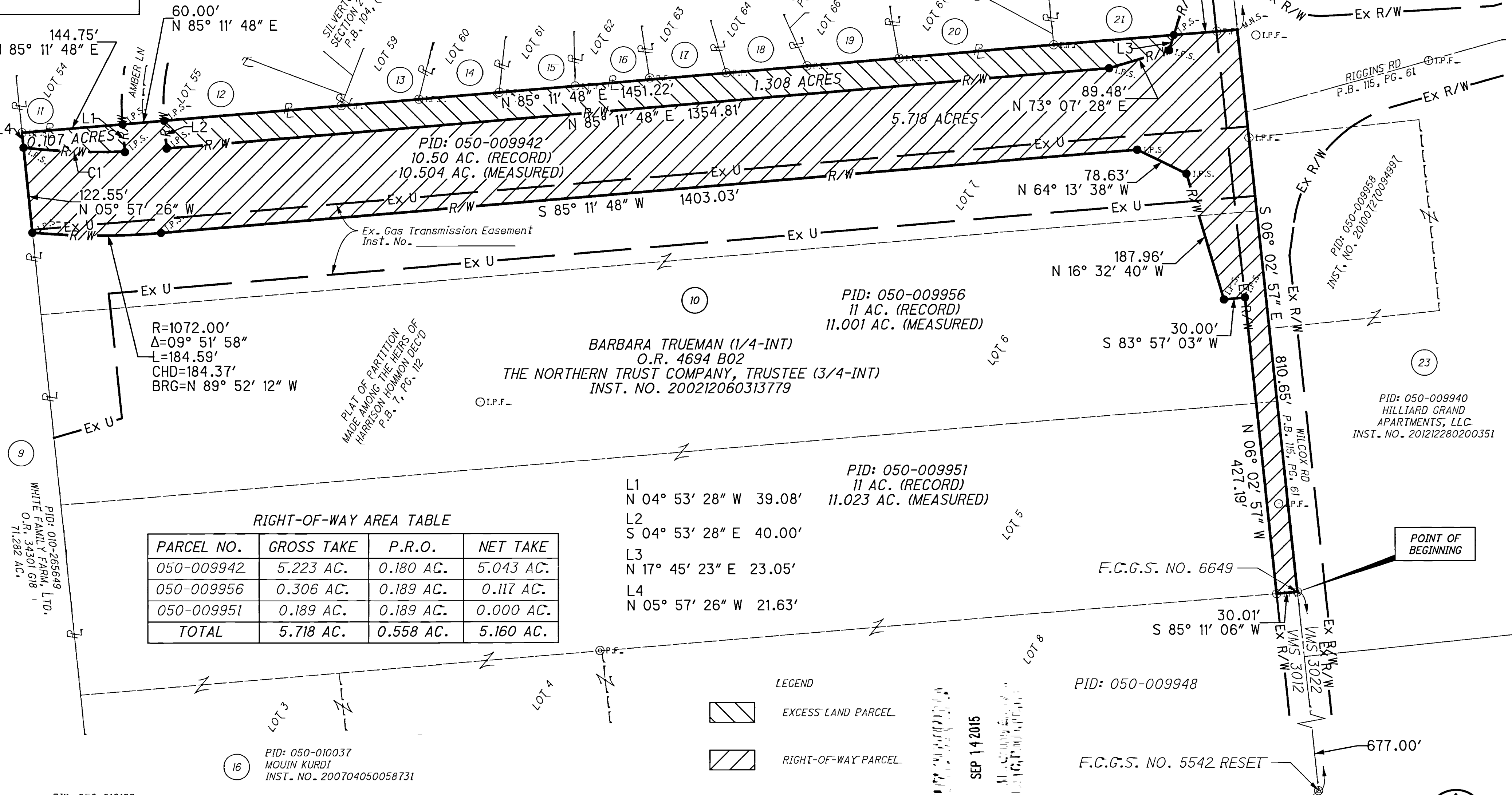
5.718 ACRES
RIGHT-OF-WAY
ACQUIRED FROM
BARBARA TRUEMAN AND
THE NORTHERN TRUST
COMPANY

C1
R=952.00'
Δ=08° 45' 40"
L=145.57'
CHD=145.43'
BRG=S 87° 54' 28" E

SITUATED IN THE STATE OF OHIO, COUNTY OF FRANKLIN
CITY OF HILLIARD, LOCATED IN VIRGINIA MILITARY SURVEY
NUMBER 3012

MONUMENT LEGEND

- M.N.S. - MAG NAIL SET
- I.P.S. - 5/8" IRON PIN SET WITH FRANKLIN COUNTY ENGINEER'S OFFICE CAPS
- I.P.F. - IRON PIN FOUND
- ⊙ P.F. - IRON PIPE FOUND
- ⊙ FRANKLIN COUNTY GEODETIC SURVEY MONUMENT



RIGHT-OF-WAY AREA TABLE

PARCEL NO.	GROSS TAKE	P.R.O.	NET TAKE
050-009942	5.223 AC.	0.180 AC.	5.043 AC.
050-009956	0.306 AC.	0.189 AC.	0.117 AC.
050-009951	0.189 AC.	0.189 AC.	0.000 AC.
TOTAL	5.718 AC.	0.558 AC.	5.160 AC.

- L1
N 04° 53' 28" W 39.08'
- L2
S 04° 53' 28" E 40.00'
- L3
N 17° 45' 23" E 23.05'
- L4
N 05° 57' 26" W 21.63'

LEGEND

- EXCESS LAND PARCEL
- RIGHT-OF-WAY PARCEL

BASIS OF BEARING:
THE BEARINGS DESCRIBED HEREON ARE BASED ON GRID NORTH (REFERENCE NORTH 06 DEGREES 02 MINUTES 57 SECONDS WEST FOR WILCOX ROAD BETWEEN FRANKLIN COUNTY GEODETIC SURVEY MONUMENTS NUMBERED 6649 AND 4461) AS ESTABLISHED BY A CONTROL SURVEY PERFORMED BY EMH&T.

I HEREBY CERTIFY THAT:
THIS DRAWING REPRESENTS THE RESULTS OF AN ACTUAL FIELD SURVEY OF THE PREMISES PERFORMED BY AMERICAN STRUCTUREPOINT, INC., AND IS TRUE AND CORRECT TO THE BEST OF MY KNOWLEDGE AND BELIEF.

Brian P. Bingham
BRIAN P. BINGHAM, P.S. NO. 8438
AMERICAN STRUCTUREPOINT, INC. 9/14/2015 DATE

- 11 PID: 050-010162 LAITH SAWALHA AND DANA CUBIC-SAWALHA INST. NO. 200605260102723
- 12 PID: 050-010163 ZAKI AHMED KHAN INST. NO. 201203020029153
- 13 PID: 050-010167 RACHEL M. HUGHES AND ANDREW P. COOK INST. NO. 201308300148246
- 14 PID: 050-010168 ZAHID LATIF INST. NO. 200711150197445
- 15 PID: 050-010169 NADEEM A. SIDDIQI AND SAMEERA AHMED INST. NO. 201304100059145
- 16 PID: 050-010037 MOUIN KURDI INST. NO. 200704050058731
- 17 PID: 050-010038 ZAHID LATIF INST. NO. 200602220034263
- 18 PID: 050-010039 MOUNIR SANHAJI AND SANAA TAHIRI, TRUSTEES INST. NO. 200802080020289
- 19 PID: 050-010041 LMR PROPERTIES, LTD. INST. NO. 2003120403866067
- 20 PID: 050-010042 MARIA BLACK INST. NO. 200409200218769
- 21 PID: 050-009945 NOOR MEADOWS, LLC INST. NO. 201304090058104

5.718 ACRE RIGHT-OF-WAY PARCEL SPLIT		FRANKLIN COUNTY	
	AMERICAN STRUCTUREPOINT INC.		2550 CORPORATE EXCHANGE DR. SUITE 300 COLUMBUS, OHIO 43231 TEL 614.901.2235 FAX 614.901.2236 www.structurepoint.com
	SCALE = 1" = 100' DATE = 9/8/2015 DRAWN BY: MJW CHECKED BY: BPB	REVISIONS JOB NO. 14.523 ARCHIVE NO.	DATE SHEET NO. 1 OF 1

mward 9/8/2015 12:53:28 PM O:\2014\00523\C.Design\FRA\14523\Row\Sheets\Exhibits\20140523.SV.2015-03-10.Truman ROW Parcel.dgn