

RECEIVED

AUG 26 2015

Franklin County Engineer  
Dean C. Ringle, P.E., P.S.



Evans, Mechwart, Hambleton & Tilton, Inc.  
Engineers • Surveyors • Planners • Scientists  
5500 New Albany Road, Columbus, OH 43054  
Phone: 614.775.4500 Toll Free: 888.775.3648  
emht.com

# SURVEY OF ACREAGE PARCELS

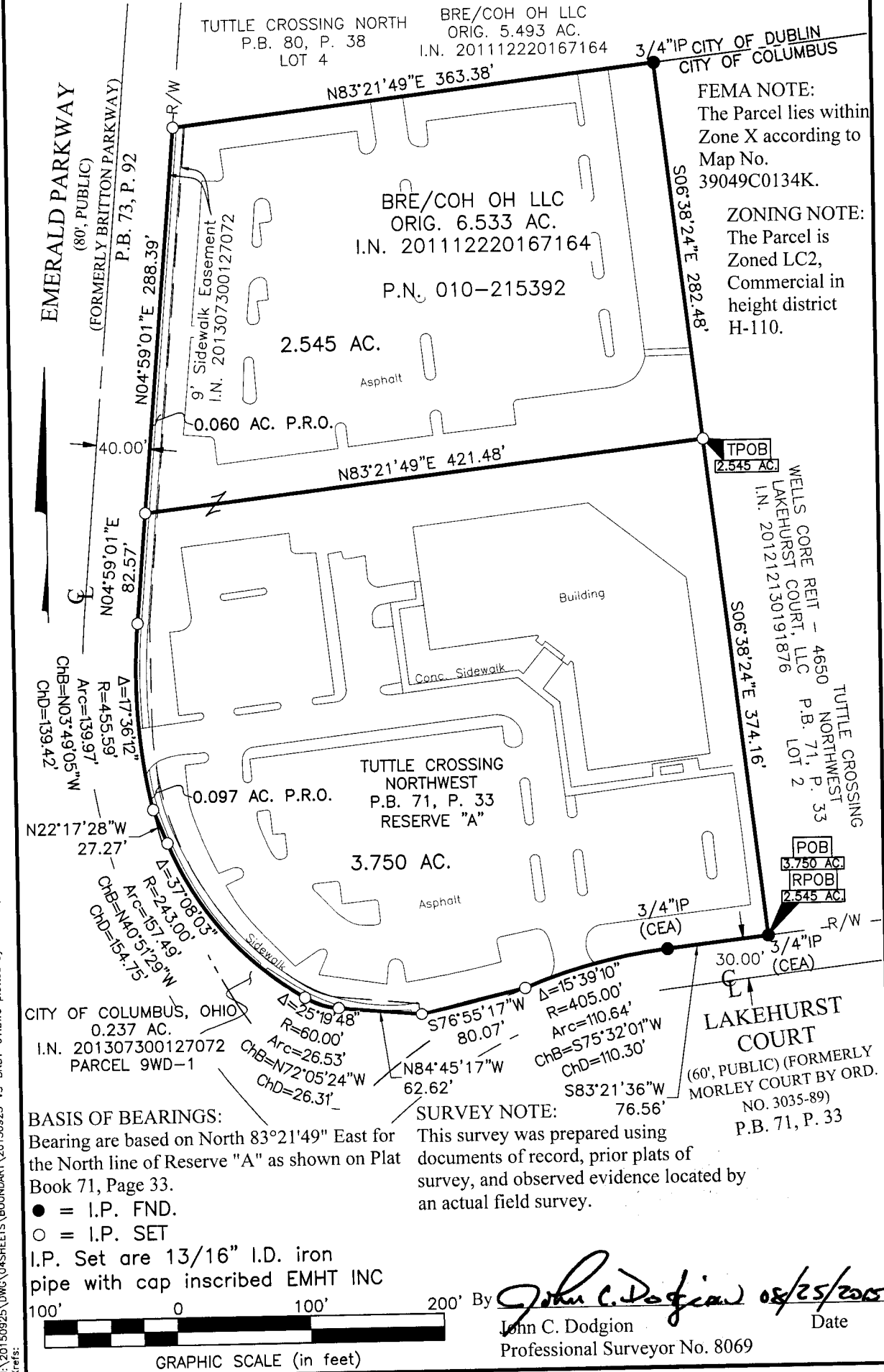
VIRGINIA MILITARY SURVEY NUMBER 3011

CITY OF COLUMBUS, COUNTY OF FRANKLIN, STATE OF OHIO

Date: August 25, 2015

Job No. 2015-0925

Scale: 1" = 100'

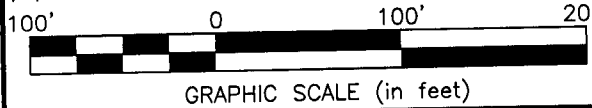


J:\20150925\DWG\045HEETS\BOUNDARY\20150925-VS-BNDY-01.DWG plotted by MARGUS on 8/25/2015 10:47:27 AM last saved by MMAGERS on 8/24/2015 2:12:22 PM

**BASIS OF BEARINGS:**  
Bearing are based on North 83°21'49" East for the North line of Reserve "A" as shown on Plat Book 71, Page 33.

● = I.P. FND.  
○ = I.P. SET  
I.P. Set are 13/16" I.D. iron pipe with cap inscribed EMHT INC

**SURVEY NOTE:**  
This survey was prepared using documents of record, prior plats of survey, and observed evidence located by an actual field survey.



By *John C. Dodgion* 08/25/2015  
John C. Dodgion Professional Surveyor No. 8069  
Date