



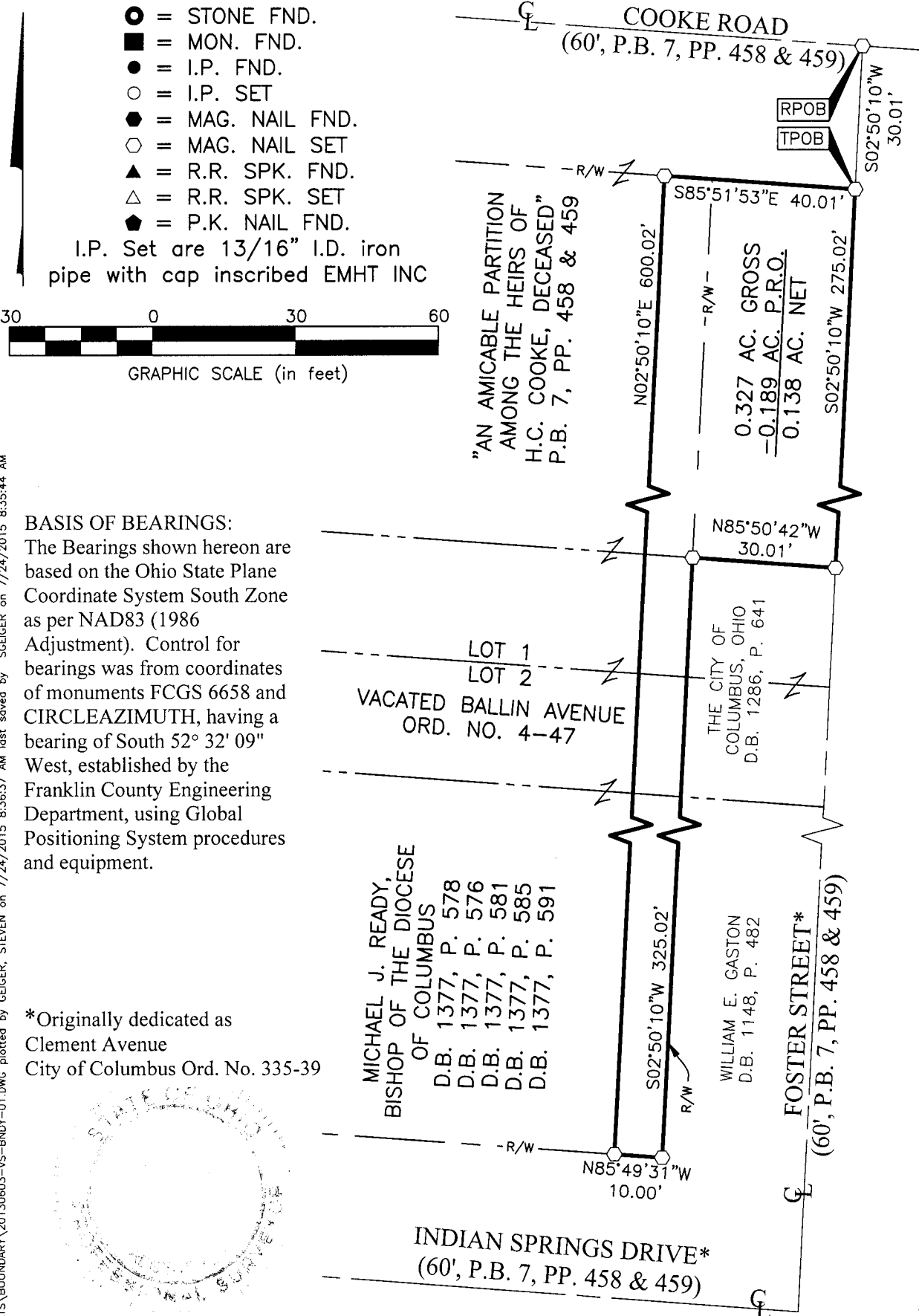
Evans, Mechwart, Hambleton & Tilton, Inc.
 Engineers • Surveyors • Planners • Scientists
 5500 New Albany Road, Columbus, OH 43054
 Phone: 614.775.4500 Toll Free: 888.775.3648
 emht.com

SURVEY OF ACREAGE PARCEL
 QUARTER TOWNSHIP 2, TOWNSHIP 1, RANGE 18
 UNITED STATES MILITARY LANDS
 CITY OF COLUMBUS, COUNTY OF FRANKLIN, STATE OF OHIO

Date: July 24, 2015

Job No. 2013-0603

Scale: 1" = 30'



U:\20130603\DWG\04SHEET\BOUNDARY\20130603-VS-BNDY-01.DWG plotted by GEIGER, STEVEN on 7/24/2015 8:36:37 AM last saved by SGEIGER on 7/24/2015 8:35:44 AM Xrefs:

BASIS OF BEARINGS:
 The Bearings shown hereon are based on the Ohio State Plane Coordinate System South Zone as per NAD83 (1986 Adjustment). Control for bearings was from coordinates of monuments FCGS 6658 and CIRCLEAZIMUTH, having a bearing of South 52° 32' 09" West, established by the Franklin County Engineering Department, using Global Positioning System procedures and equipment.

*Originally dedicated as Clement Avenue
 City of Columbus Ord. No. 335-39



By *J.M. Meyer*
 Joshua M. Meyer
 Professional Surveyor No. 8485

7-24-2015
 Date

RECEIVED

JUL 28 2015

Franklin County Engineer
 Dean C. Ringle, P.E., P.S.