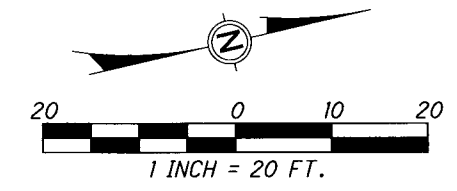


# RIGHT OF WAY DEDICATION - PARKWAY CENTRE DRIVE

FRANKLIN COUNTY  
 CITY OF GROVE CITY  
 V.M.S. 8231



SCHULZ GROVE CITY, LLC,  
 A VIRGINIA LIMITED  
 LIABILITY COMPANY  
 040-015110-00  
 INST. #201403070028274  
 LOT 1

TEXAS ROADHOUSE HOLDINGS LLC,  
 A KENTUCKY LIMITED LIABILITY COMPANY  
 040-015111-00  
 INST. #201412100163940  
 LOT 2

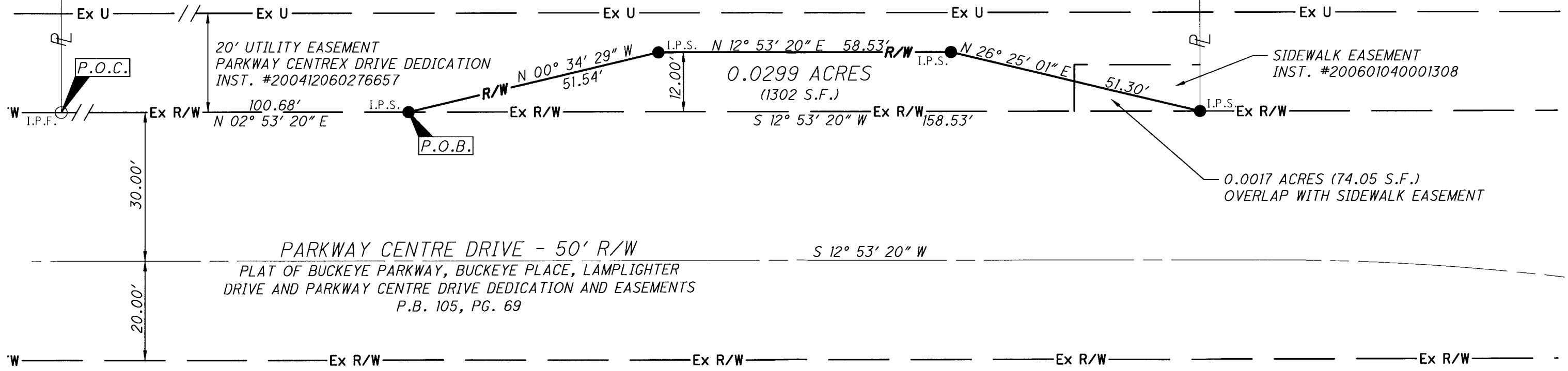
**RECEIVED**

MAY 12 2015

Franklin County Engineer  
 Dean C. Ringle, P.E., P.S.

BOB EVANS FARMS, INC.  
 040-005958-00  
 INST. #200210310275891

THE SHOPPES AT PARKWAY CENTRE WEST  
 P.B. 116, PG. 37



PARKWAY CENTRE DRIVE - 50' R/W  
 PLAT OF BUCKEYE PARKWAY, BUCKEYE PLACE, LAMPLIGHTER  
 DRIVE AND PARKWAY CENTRE DRIVE DEDICATION AND EASEMENTS  
 P.B. 105, PG. 69



**BASIS OF BEARINGS:**

BEARINGS ARE BASED ON THE WESTERLY RIGHT OF WAY LINE OF PARKWAY CENTRE DRIVE BEING  $S 12^\circ 53' 20'' W$ , AS SHOWN ON THE PLAT OF BUCKEYE PARKWAY, BUCKEYE PLACE, LAMPLIGHTER DRIVE AND PARKWAY CENTRE DRIVE DEDICATION AND EASEMENTS AS RECORDED IN P.B. 105, PG. 69.

**LEGEND:**

- I.P.F. ○ 5/8" REBAR (FOUND) W/CAP "7159"
- I.P.S. ● 5/8" REBAR (SET) W/CAP "GPD"
- P.O.C. POINT OF COMMENCEMENT
- P.O.B. POINT OF BEGINNING

*Steven L. Mullaney*  
 STEVEN L. MULLANEY, P.S. 7900

5/11/2015  
 DATE