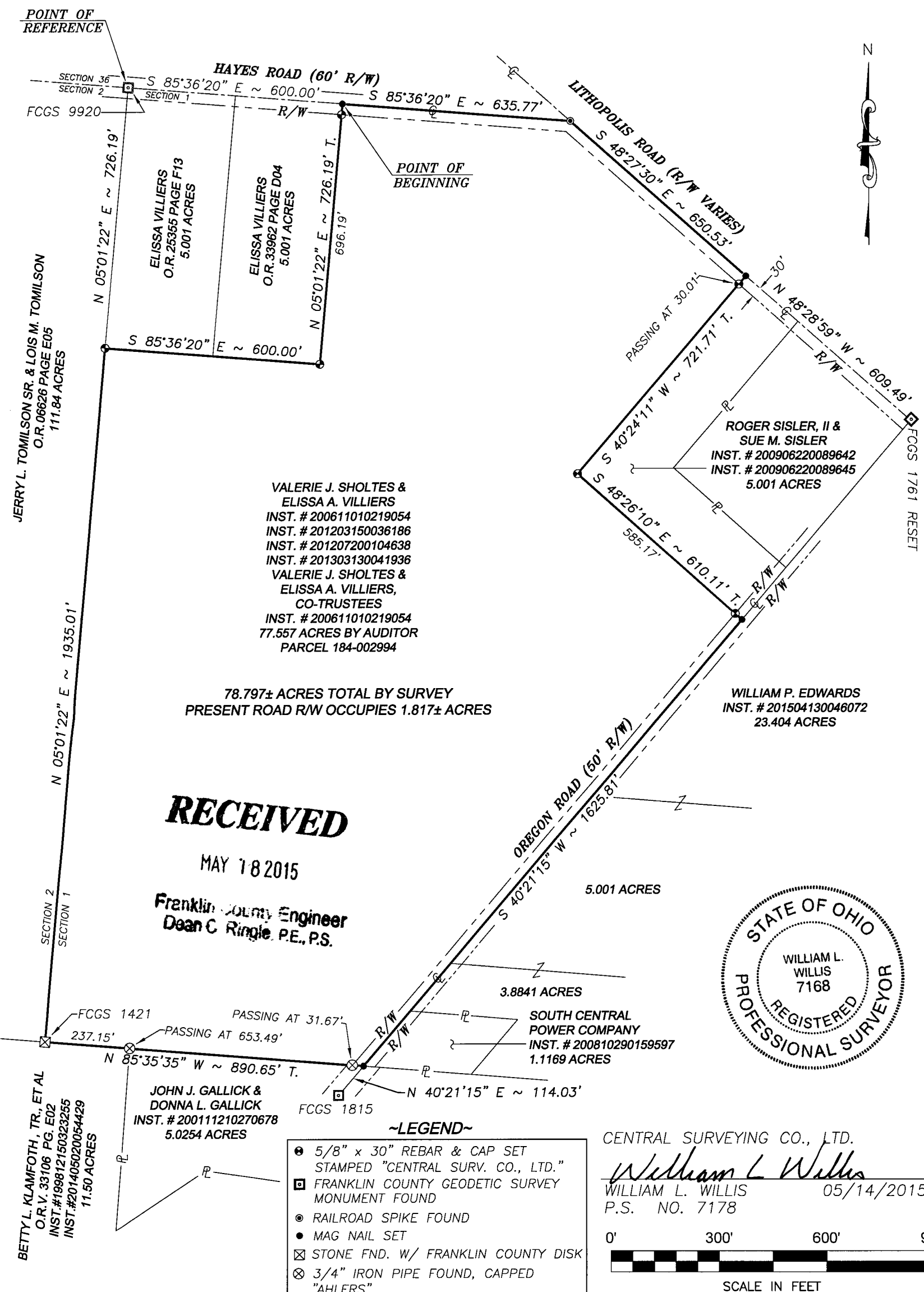


EXHIBIT "A"



VALERIE J. SHOLTES &
ELISSA A. VILLIERS
INST. # 200611010219054
INST. # 201203150036186
INST. # 201207200104638
INST. # 201303130041936
VALERIE J. SHOLTES &
ELISSA A. VILLIERS,
CO-TRUSTEES
INST. # 200611010219054
77.557 ACRES BY AUDITOR
PARCEL 184-002994

78.797± ACRES TOTAL BY SURVEY
PRESENT ROAD R/W OCCUPIES 1.817± ACRES

WILLIAM P. EDWARDS
INST. # 201504130046072
23.404 ACRES

5.001 ACRES

3.8841 ACRES
SOUTH CENTRAL
POWER COMPANY
INST. # 200810290159597
1.1169 ACRES

JOHN J. GALLICK &
DONNA L. GALLICK
INST. # 200111210270678
5.0254 ACRES

BETTY L. KLAMFOTH, TR., ET AL
O.R.V. 33106 PG. E02
INST. # 199812150323255
INST. # 201405020054429
11.50 ACRES

RECEIVED

MAY 18 2015

Franklin County Engineer
Dean C. Ringle, P.E., P.S.



~LEGEND~

- 5/8" x 30" REBAR & CAP SET
STAMPED "CENTRAL SURV. CO., LTD."
- FRANKLIN COUNTY GEODETIC SURVEY
MONUMENT FOUND
- RAILROAD SPIKE FOUND
- MAG NAIL SET
- ⊗ STONE FND. W/ FRANKLIN COUNTY DISK
- ⊗ 3/4" IRON PIPE FOUND, CAPPED
"AHLERS"

CENTRAL SURVEYING CO., LTD.

William L. Willis
WILLIAM L. WILLIS 05/14/2015
P.S. NO. 7178



SCALE IN FEET
SCALE: 1 INCH = 300 FEET

BASIS OF BEARINGS:

BEARINGS ARE BASED ON MEASUREMENTS AND COMPUTATIONS ON THE OHIO STATE PLANE COORDINATE SYSTEM, OHIO SOUTH ZONE, NORTH AMERICAN DATUM 1983, (2009), SHOWING THE CENTERLINE BETWEEN F.C.G.S. MONUMENT 1761 RESET AND F.C.G.S. MONUMENT 1815 AS BEING S 40°21'15" W.

SITUATE:

SITUATED IN THE STATE OF OHIO, COUNTY OF FRANKLIN, CITY OF CANAL WINCHESTER, SECTION 1, TOWNSHIP 10, RANGE 21, BUCKINGHAM'S SURVEY OF CONGRESS LANDS

NOTE:

SUBJECT TO ALL LEGAL STREETS, HIGHWAYS, RIGHT-OF-WAYS, ALLEYS, EASEMENTS, AGREEMENTS AND/OR CONDITIONS OF RECORD, IF ANY.

CENTRAL SURVEYING CO., LTD.

7563 East Main Street
Reynoldsburg, Ohio 43068

| | |
|---------------------------------------|-----------------|
| FOR: CARL SHOLTES | |
| BOUNDARY SURVEY - 78.797 ACRES | |
| Drawn By: DTB DS | Checked By: DTB |
| Scale: 1"=300' | Date: 05/14/15 |
| File Name: 2015-0110-SHOLTES | Drawing Number: |
| Revisions: - | 2015-0110 |