

RECEIVED

MAY 21 2015

Franklin County Engineer  
Dean C. Ringle, P.E., P.S.

A-3-F



Evans, Mechwart, Hornblaton & Tilton, Inc.  
Engineers • Surveyors • Planners • Scientists  
5500 New Albany Road, Columbus, OH 43054  
Phone: 614.775.4500 Toll Free: 888.775.3648  
emht.com

### SURVEY OF ACREAGE PARCEL

QUARTER TOWNSHIP 2, TOWNSHIP 2, RANGE 19

UNITED STATES MILITARY LANDS

CITY OF DUBLIN, COUNTY OF FRANKLIN, STATE OF OHIO

Date: May 19, 2015

Job No. 2013-0451

Scale: 1" = 60'

#### SURVEY NOTE:

This survey was prepared using documents of record, prior plats of survey, and observed evidence located by an actual field survey.

#### BASIS OF BEARINGS:

The Bearings shown hereon are based on the Ohio State Plane Coordinate System South Zone as per NAD83 (1986 Adjustment). Control for bearings was from coordinates of monuments FRANK 73 and FRANK 74, having a bearing of South 73° 57' 18" East, established by the Franklin County Engineers Department, using Global Positioning System procedures and equipment.

● = I.P. FND.

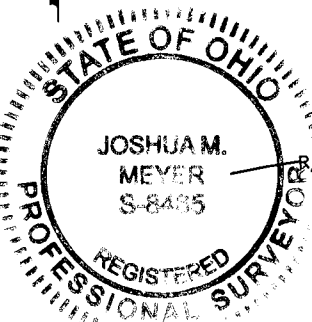
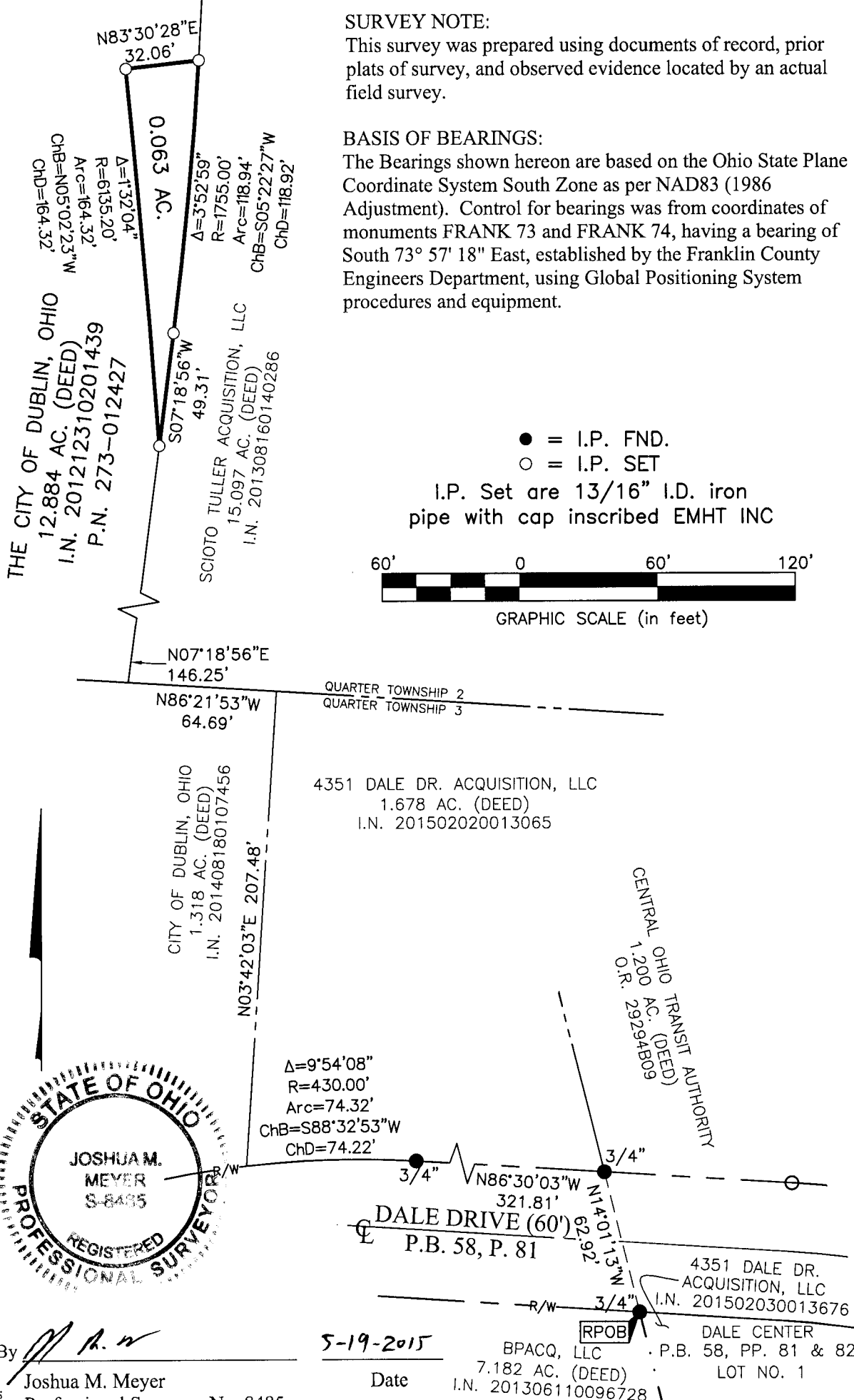
○ = I.P. SET

I.P. Set are 13/16" I.D. iron pipe with cap inscribed EMHT INC



GRAPHIC SCALE (in feet)

J:\20130451\DWG\04SHEETS\BOUNDARY\20130451-VS-BNDY-17.DWG plotted by MAGERS, MARCUS on 5/19/2015 7:59:58 AM last saved by MMAGERS on 5/18/2015 3:25:41 PM



By Joshua M. Meyer  
Professional Surveyor No. 8485

Date 5-19-2015

BACQ, LLC  
7.182 AC. (DEED)  
I.N. 201306110096728



DALE CENTER  
P.B. 58, PP. 81 & 82  
LOT NO. 1