



Evans, Mechwart, Hambleton & Tilton, Inc.
 Engineers • Surveyors • Planners • Scientists
 5500 New Albany Road, Columbus, OH 43054
 Phone: 614.775.4500 Toll Free: 888.775.3648
 emht.com

SURVEY OF ACREAGE PARCEL

QUARTER TOWNSHIP 3, TOWNSHIP 2, RANGE 19

UNITED STATES MILITARY LANDS

CITY OF DUBLIN, COUNTY OF FRANKLIN, STATE OF OHIO

Date: May 27, 2015

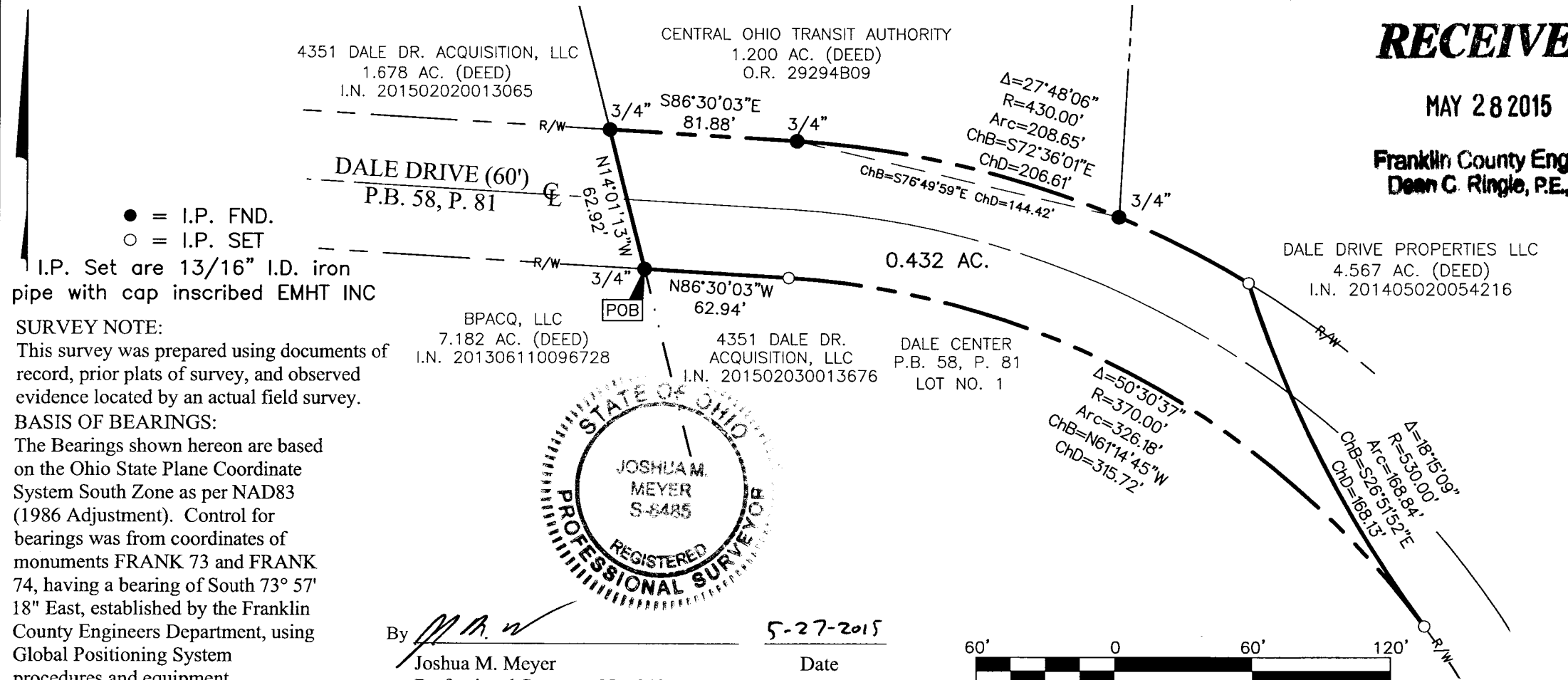
Scale: 1" = 60'

Job No. 2013-0451

RECEIVED

MAY 28 2015

Franklin County Engineer
 Dean C. Ringle, P.E., P.S.

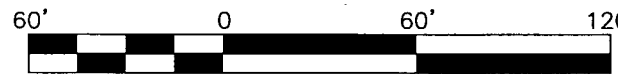


● = I.P. FND.
 ○ = I.P. SET
 I.P. Set are 13/16" I.D. iron pipe with cap inscribed EMHT INC

SURVEY NOTE:
 This survey was prepared using documents of record, prior plats of survey, and observed evidence located by an actual field survey.

BASIS OF BEARINGS:
 The Bearings shown hereon are based on the Ohio State Plane Coordinate System South Zone as per NAD83 (1986 Adjustment). Control for bearings was from coordinates of monuments FRANK 73 and FRANK 74, having a bearing of South 73° 57' 18" East, established by the Franklin County Engineers Department, using Global Positioning System procedures and equipment.

By *J.M.M.*
 Joshua M. Meyer
 Professional Surveyor No. 8485
 Date 5-27-2015



GRAPHIC SCALE (in feet)