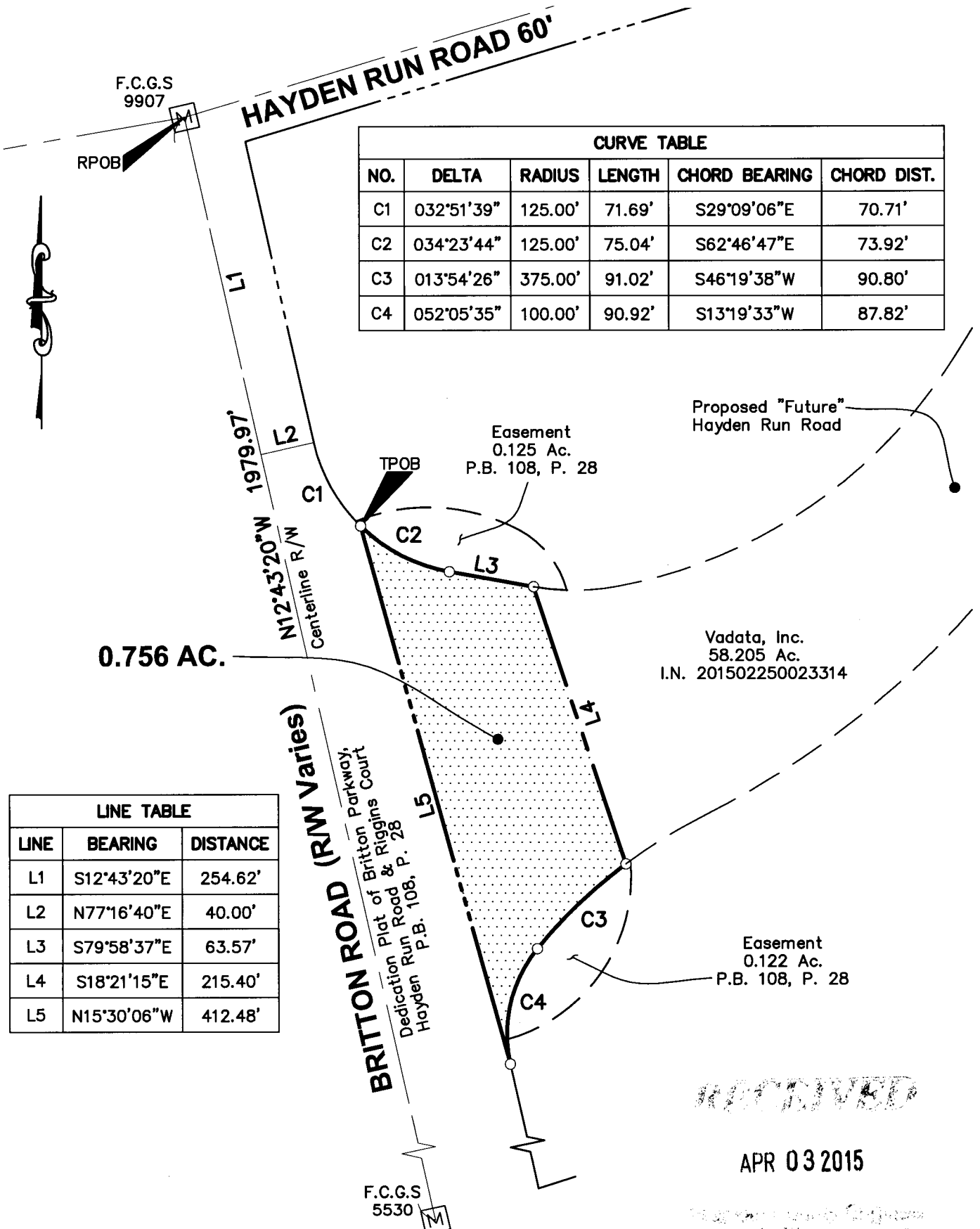


0.756 Ac. Right-of-Way Exhibit

City of Hilliard, Franklin County, Ohio
Virginia Military Survey No. 2418

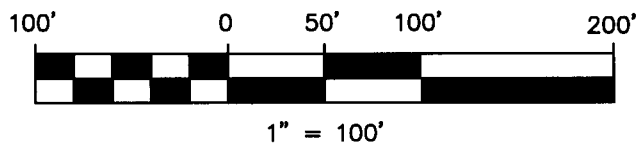


CURVE TABLE					
NO.	DELTA	RADIUS	LENGTH	CHORD BEARING	CHORD DIST.
C1	032°51'39"	125.00'	71.69'	S29°09'06"E	70.71'
C2	034°23'44"	125.00'	75.04'	S62°46'47"E	73.92'
C3	013°54'26"	375.00'	91.02'	S46°19'38"W	90.80'
C4	052°05'35"	100.00'	90.92'	S13°19'33"W	87.82'

LINE TABLE		
LINE	BEARING	DISTANCE
L1	S12°43'20"E	254.62'
L2	N77°16'40"E	40.00'
L3	S79°58'37"E	63.57'
L4	S18°21'15"E	215.40'
L5	N15°30'06"W	412.48'

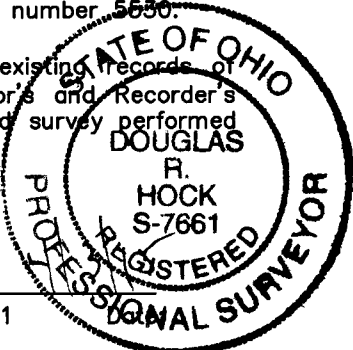
RECEIVED

APR 03 2015



Bearings are based on the Ohio State Plane Coordinate System NAD83, NSRS 2007. A bearing of S 12° 43' 20" E was established by GPS for the centerline of Britton Road between Franklin County Geodetic Survey monument number 9907 and Franklin County Geodetic Survey monument number 5530.

This survey is based on existing records of the Franklin County Auditor's and Recorder's Offices, and an actual field survey performed in January 2015.



Douglas R. Hock
Douglas R. Hock, P.S. 7661

DRAWN BY: <i>BCK</i>	JOB NO.: 14-0001-657
DATE: 4/2/2015	CHECKED BY: <i>DRB</i>

ADVANCED
CIVIL DESIGN
ENGINEERS SURVEYORS

422 Beecher Road
Gahanna, Ohio 43230
ph 614.428.7750
fax 614.428.7755