



Evans, Mechwart, Hambleton & Tilton, Inc.
 Engineers • Surveyors • Planners • Scientists
 5500 New Albany Road, Columbus, OH 43054
 Phone: 614.775.4500 Toll Free: 888.775.3648
 emht.com

K- -F

SURVEY OF ACREAGE PARCEL

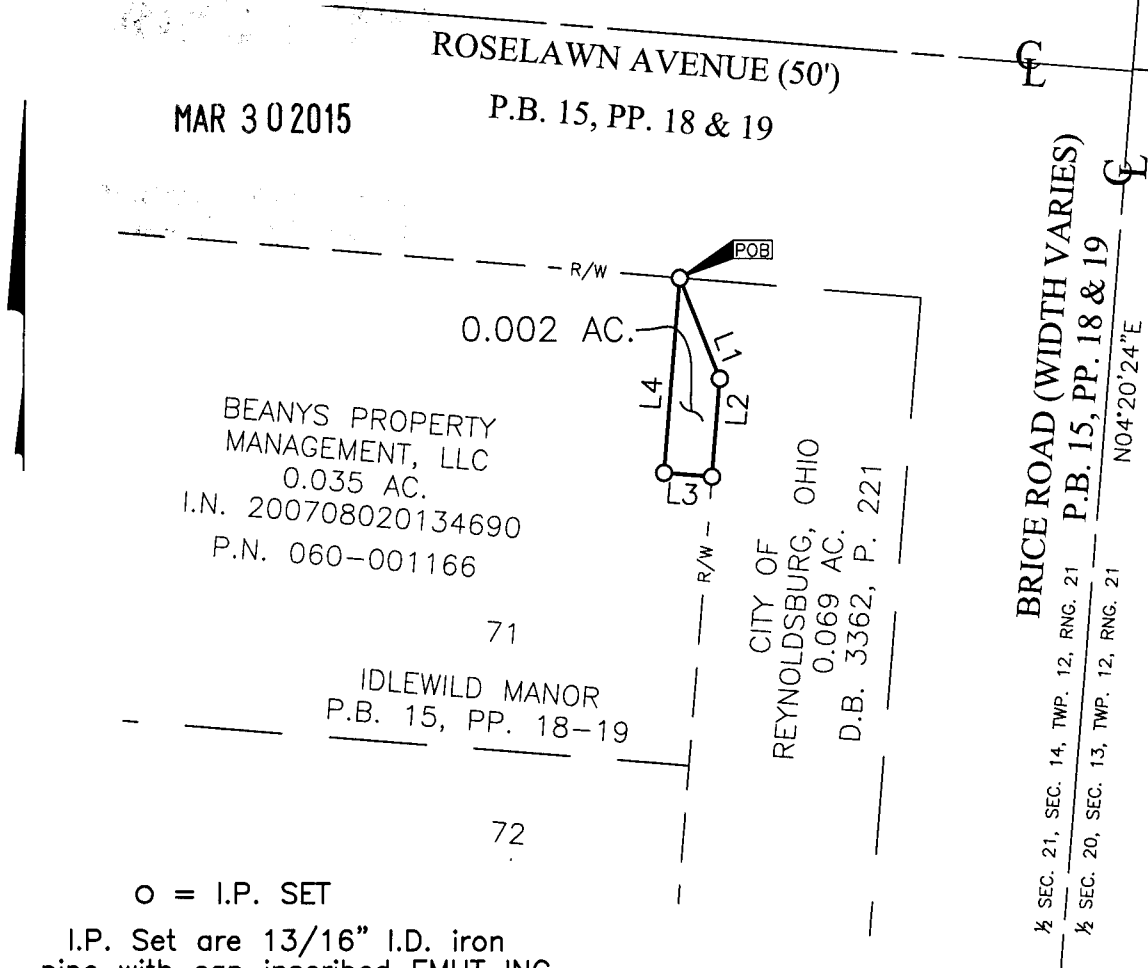
HALF SECTION 21, SECTION 14, TOWNSHIP 12, RANGE 21
 REFUGEE LANDS
 CITY REYNOLDSBURG, COUNTY OF FRANKLIN, STATE OF OHIO

Date: May 23, 2014

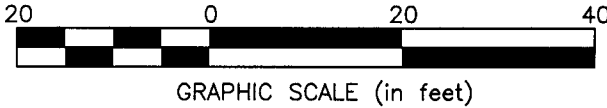
Job No. 2013-0464

Scale: 1" = 20'

J:\20130464\DWG\04SHEETS\BOUNDARY\20130464-VS-BNDY-RWAY-05.DWG plotted by MAGER, MARCUS on 3/27/2015 10:30:11 AM last saved by TDIROMA on 5/23/2014 7:57:38 AM Xrefs: FRA-ROWDROPS.DWG



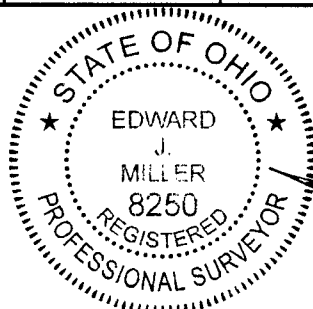
○ = I.P. SET
 I.P. Set are 13/16" I.D. iron pipe with cap inscribed EMHT INC

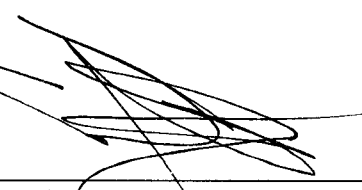


Line Table		
Line Number	Direction	Length
L1	S22°10'11"E	11.20'
L2	S04°20'24"W	10.14'
L3	N85°39'36"W	5.00'
L4	N04°20'24"E	20.16'

SURVEY NOTE:
 This survey was prepared using documents of record, prior plats of survey, and observed evidence located by an actual field survey.

BASIS OF BEARINGS:
 The bearings shown on this plat are based on the Ohio State Plane Coordinate System, South] Zone, NAD83 (NSRS 2007). Said bearings originated from a field traverse which was tied (referenced) to said coordinate system by GPS observations of Franklin County monuments FRANK 145 and FRANK 45. The portion of the centerline of Brice Road, having a bearing of North 04° 20' 24" East as shown hereon, is designated the "basis of bearing" for this survey.



By  Date 5/15/14

Edward J. Miller
 Professional Surveyor No. 8250