



Evans, Mechwart, Hambleton & Tilton, Inc.  
 Engineers • Surveyors • Planners • Scientists  
 5500 New Albany Road, Columbus, OH 43054  
 Phone: 614.775.4500 Toll Free: 888.775.3648  
 emht.com

# SURVEY OF ACREAGE PARCEL

## VIRGINIA MILITARY SURVEY NOS. 4854 & 3000

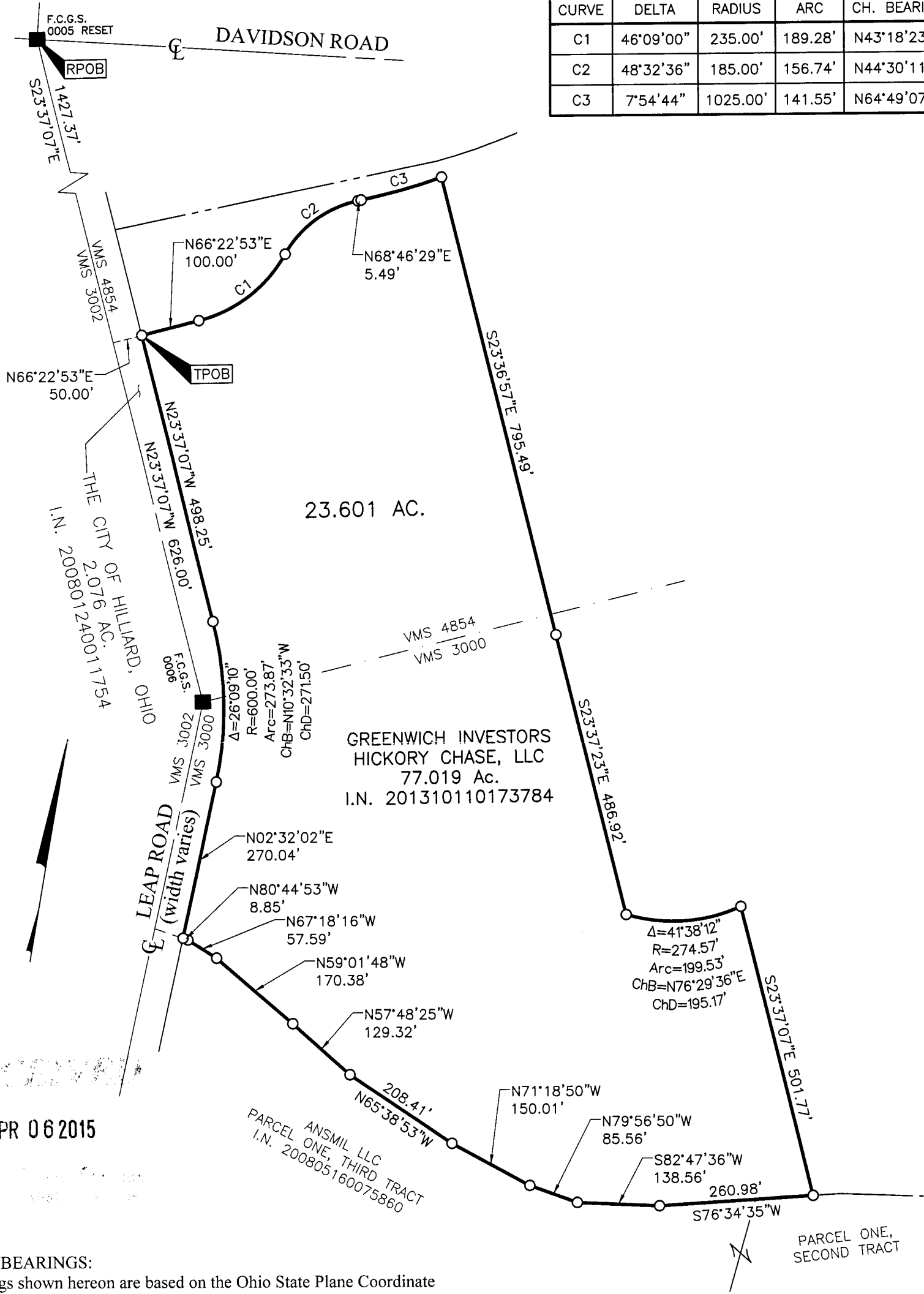
### CITY OF HILLIARD, COUNTY OF FRANKLIN, STATE OF OHIO

Date: April 6, 2015

Job No. 2015-0434

Scale: 1" = 200'

CURVE TABLE					
CURVE	DELTA	RADIUS	ARC	CH. BEARING	CH. DIST.
C1	46°09'00"	235.00'	189.28'	N43°18'23"E	184.21'
C2	48°32'36"	185.00'	156.74'	N44°30'11"E	152.09'
C3	7°54'44"	1025.00'	141.55'	N64°49'07"E	141.43'



APR 06 2015

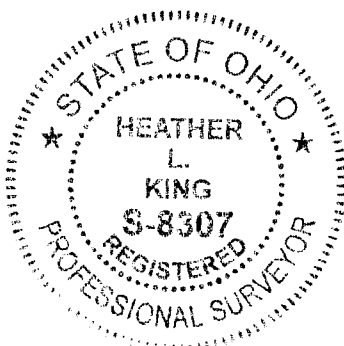
**BASIS OF BEARINGS:**

The Bearings shown hereon are based on the Ohio State Plane Coordinate System, South Zone, as per NAD83 (1986 Adjustment). Control for bearings was from coordinates of monuments FCGS 0005 RESET and FCGS 0006, having a bearing of North 23° 37' 07" West, established by the Franklin County Engineering Department, using Global Positioning System procedures and equipment.

**SURVEY NOTE:**

This survey was prepared using documents of record, prior plats of survey, and observed evidence located by an actual field survey.

By Heather L. King 4/6/15  
 Heather L. King Date  
 Professional Surveyor No. 8307



- = STONE FND.
  - = MON. FND.
  - = I.P. FND.
  - = I.P. SET
  - = MAG. NAIL FND.
  - = MAG. NAIL SET
  - ▲ = R.R. SPK. FND.
  - △ = R.R. SPK. SET
  - = P.K. NAIL FND.
- I.P. Set are 13/16" I.D. iron pipe with cap inscribed EMHT INC

