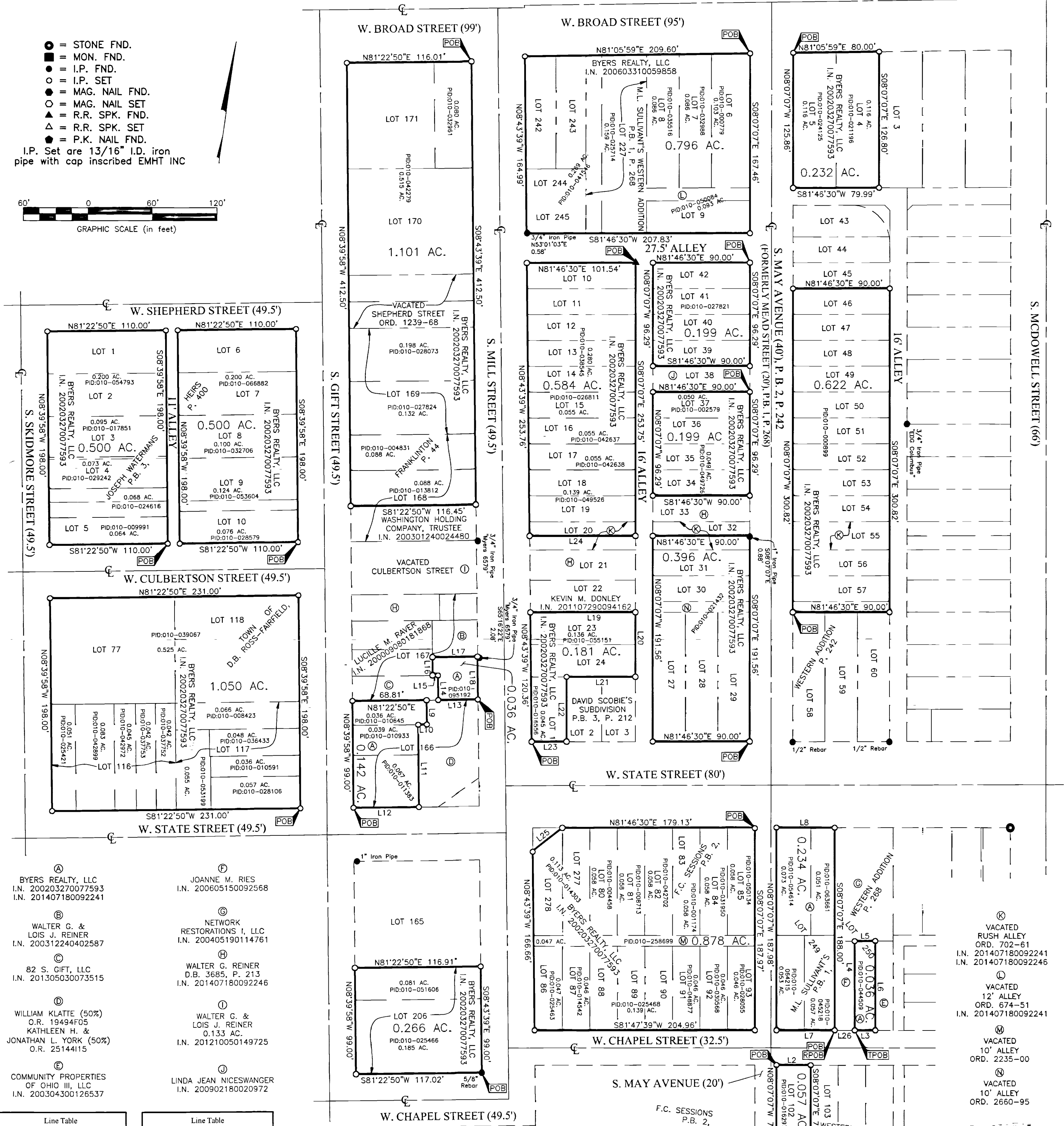
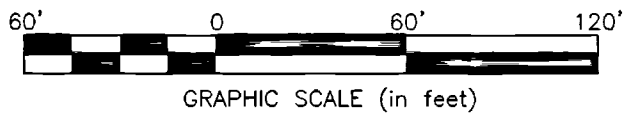


# SURVEY OF ACREAGE PARCELS

## VIRGINIA MILITARY SURVEY NO. 1393

### CITY OF COLUMBUS, COUNTY OF FRANKLIN, STATE OF OHIO

- = STONE FND.
  - = MON. FND.
  - = I.P. FND.
  - = I.P. SET
  - = MAG. NAIL FND.
  - = MAG. NAIL SET
  - ▲ = R.R. SPK. FND.
  - ▲ = R.R. SPK. SET
  - = P.K. NAIL FND.
- I.P. Set are 13/16" I.D. iron pipe with cap inscribed EMHT INC



- BYERS REALTY, LLC  
I.N. 200203270077593  
I.N. 201407180092241
- WALTER G. & LOIS J. REINER  
I.N. 200312240402587
- 82 S. GIFT, LLC  
I.N. 201305030073515
- WILLIAM KLATTE (50%)  
O.R. 19494F05  
KATHLEEN H. & JONATHAN L. YORK (50%)  
O.R. 25144115
- COMMUNITY PROPERTIES OF OHIO III, LLC  
I.N. 200304300126537
- JOANNE M. RIES  
I.N. 200605150092568
- NETWORK RESTORATIONS I, LLC  
I.N. 200405190114761
- WALTER G. REINER D.B. 3685, P. 213  
I.N. 201407180092246
- WALTER G. & LOIS J. REINER  
O.R. 133 AC.  
I.N. 201210050149725
- LINDA JEAN NICESWANGER  
I.N. 200902180020972

Line Number	Direction	Length
L1	S81°47'10"W	31.77'
L2	N81°47'39"E	31.77'
L3	S81°47'39"W	19.12'
L4	N08°07'07"W	83.01'
L5	N81°46'30"E	19.12'
L6	S08°07'07"E	83.01'
L7	S81°47'39"W	54.25'
L8	N81°46'30"E	54.25'
L9	S08°39'58"E	22.67'
L10	S81°22'50"W	8.00'
L11	S08°39'58"E	76.33'
L12	S81°22'50"W	60.81'
L13	S81°22'50"W	37.00'

Line Number	Direction	Length
L14	N08°43'39"W	23.02'
L15	S81°43'28"W	5.00'
L16	N08°43'39"W	16.95'
L17	N81°22'50"E	42.00'
L18	S08°43'39"E	40.00'
L19	N81°46'30"E	98.08'
L20	S08°07'07"E	60.18'
L21	S81°46'30"W	64.25'
L22	S08°07'07"E	60.18'
L23	S81°46'30"W	32.55'
L24	S81°46'30"W	98.84'
L25	N44°13'28"E	34.87'
L26	N81°47'39"E	18.54'

**BASIS OF BEARINGS:**  
The bearings shown on this survey are based on the Ohio State Plane Coordinate System, South Zone, NAD 83 (1986). Said coordinates originated from a field traverse which was tied (referenced) to said coordinate system by GPS observations of Franklin County Engineering Department monuments COC4-83, and RINGLE. The portion of the centerline of South Mill Street, having a bearing of North 08°43'39" West and monumented as shown hereon, is designated the "basis of bearing" for this survey.

**SURVEY NOTE:**  
This survey was prepared using documents of record, prior plats of survey, and observed evidence located by an actual field survey performed in December of 2013.

By *Heather L. King* 2/25/15  
Heather L. King Date  
Professional Surveyor No. 8307

Evans, Mechwart, Hambleton & Tilton, Inc.  
Engineers • Surveyors • Planners • Scientists  
5500 New Albany Road, Columbus, OH 43254  
Phone: 614.775.4500 Toll Free: 888.775.3648  
emht.com

Date: February 17, 2014  
Scale: 1" = 60'  
Job No: 2013-1897  
Sheet: 1 of 1

REVISIONS		
MARK	DATE	DESCRIPTION
HLK	2/25/13	Revisions per updated deeds

FEB 26 2015