





Evans, Mechwart, Hambleton & Tilton, Inc.  
 Engineers • Surveyors • Planners • Scientists  
 5500 New Albany Road, Columbus, OH 43054  
 Phone: 614.775.4500 Toll Free: 888.775.3648  
 emht.com

# SURVEY OF ACREAGE PARCEL

QUARTER TOWNSHIP 2, TOWNSHIP 2, RANGE 17  
 UNITED STATES MILITARY LANDS  
 CITY OF WESTERVILLE, COUNTY OF FRANKLIN, STATE OF OHIO

Date: October 2, 2014

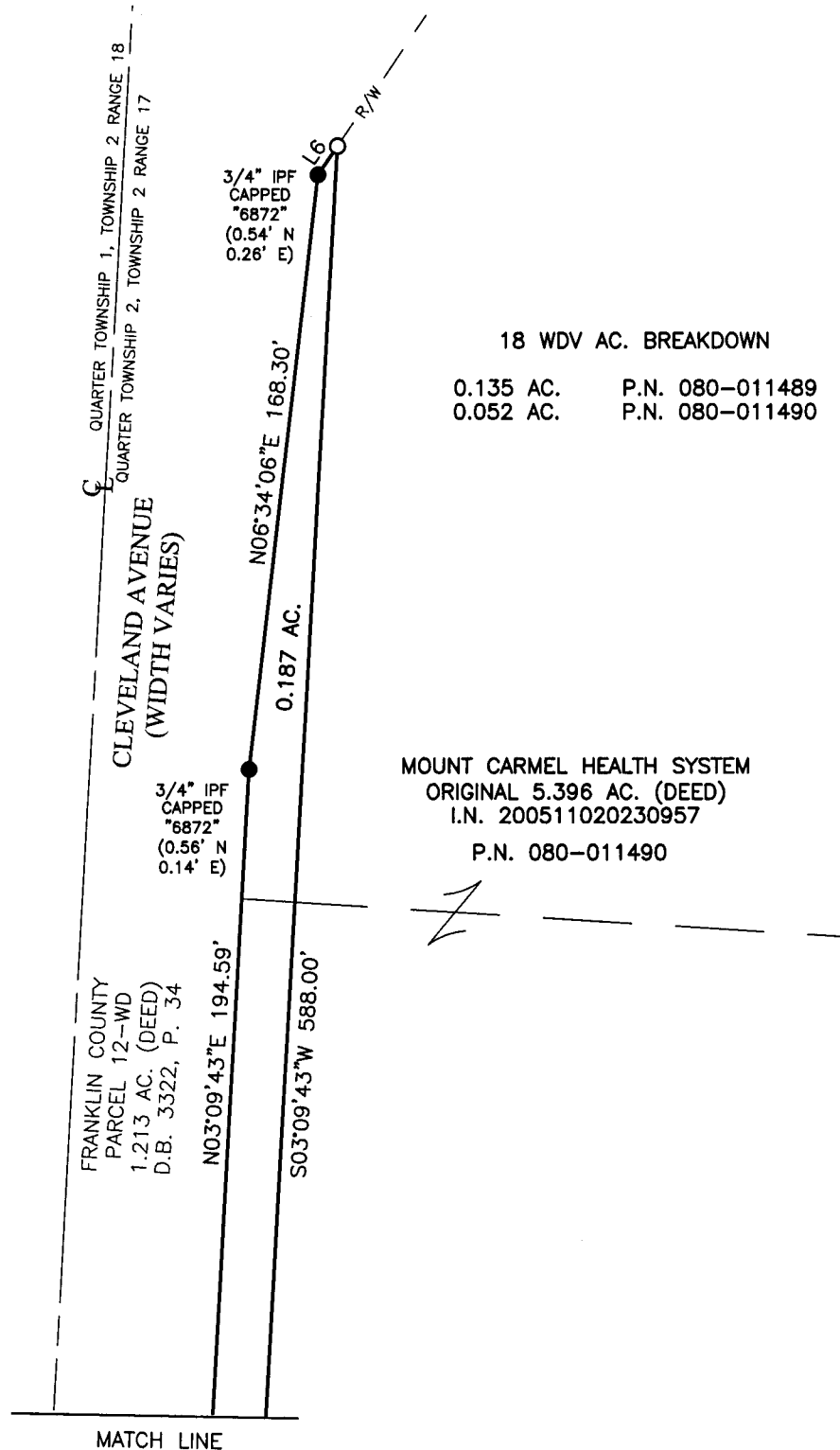
Job No. 2013-0183

Scale: 1" = 50'

Revised: January 8, 2015

2  
2

Line Table		
Line Number	Direction	Length
L1	S86°22'47"E	40.00'
L2	N03°09'43"E	22.41'
L3	S86°50'17"E	12.00'
L4	N03°09'43"E	15.00'
L5	N86°50'17"W	12.00'
L6	N34°07'32"E	9.72'
L7	S03°37'13"W	0.24'
L8	N86°22'47"W	20.00'
L9	S86°22'47"E	60.00'
L10	S04°46'59"E	18.09'
L11	S03°37'13"W	0.25'
L12	N86°22'47"W	2.50'



FEB 06 2015

- = STONE FND.
- = MON. FND.
- = 3/4" I.P. FND.
- = I.P. SET
- = MAG. NAIL FND.
- = MAG. NAIL SET
- ▲ = R.R. SPK. FND.
- △ = R.R. SPK. SET
- = P.K. NAIL FND.

I.P. Set are 13/16" I.D. iron pipe with cap inscribed EMHT INC



**BASIS OF BEARINGS:**

The bearings shown on this plat are based on the Ohio State Plane Coordinate System, South Zone, NAD83 (1986). Said bearings originated from a field traverse which was tied (referenced) to said coordinate system by GPS observations and observations of selected Franklin County Engineering Department monuments FRANK 85 and WEST 17. The portion of the centerline of Schrock Road, having a bearing of N78°31'16"E and monumented as shown hereon, is designated the "basis of bearing" for this survey.

**SURVEY NOTE:**

This survey was prepared using documents of record, prior plats of survey, and observed evidence located by an actual field survey.