

E-6-C



Evans, Mechwart, Hambleton & Tilton, Inc.
Engineers • Surveyors • Planners • Scientists
5500 New Albany Road, Columbus, OH 43054
Phone: 614.775.4500 Toll Free: 888.775.3648
emht.com

SURVEY OF ACREAGE PARCEL

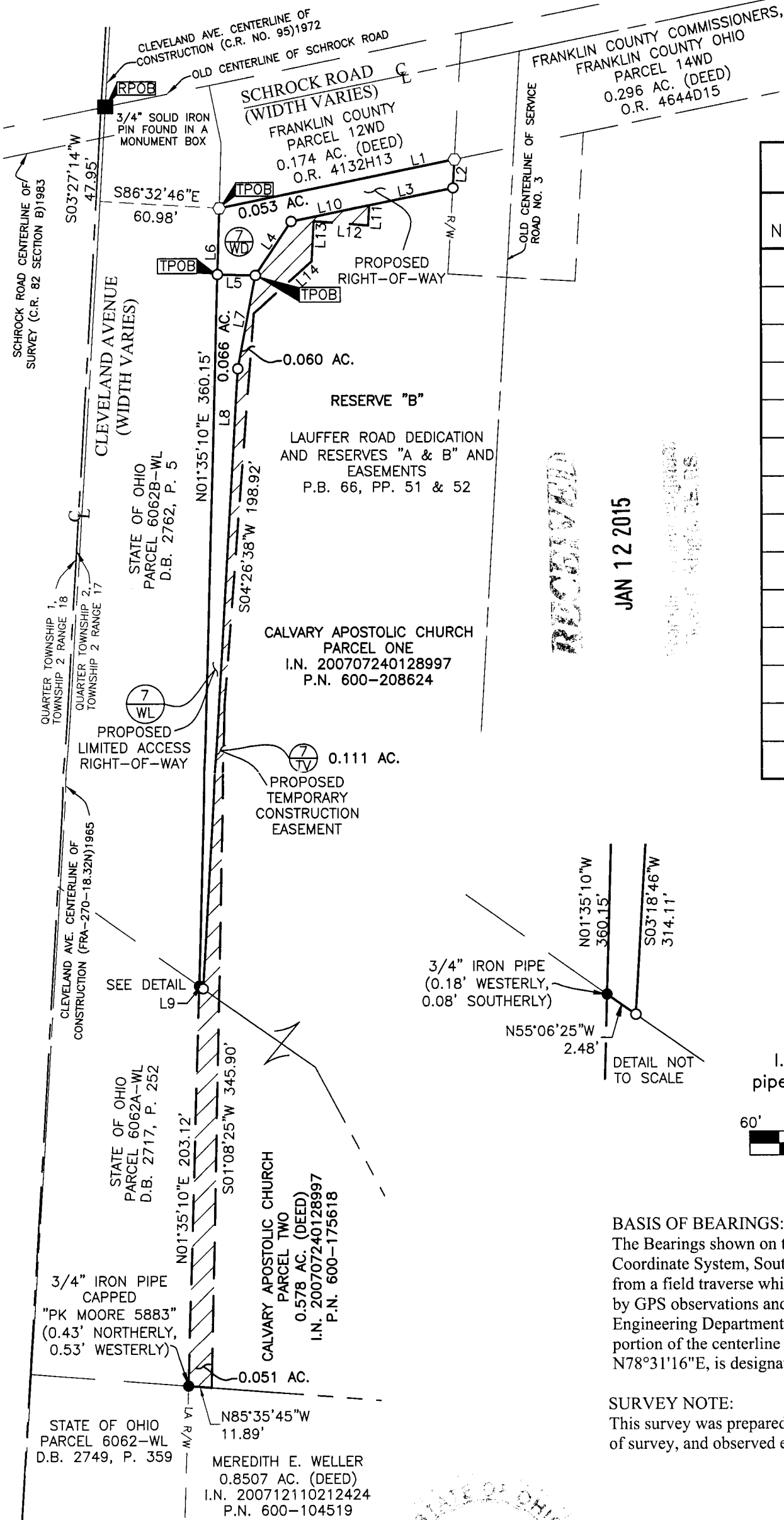
QUARTER TOWNSHIP 2, TOWNSHIP 2, RANGE 17
UNITED STATES MILITARY LANDS
CITY OF COLUMBUS, COUNTY OF FRANKLIN, STATE OF OHIO

Date: September 30, 2014

Job No. 2013-0183

Scale: 1" = 60'

Revised: January 8, 2015



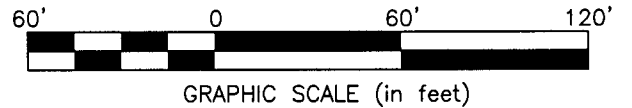
Line Table		
Line Number	Direction	Length
L1	N78°31'16"E	122.60'
L2	S03°20'44"W	14.48'
L3	S78°31'16"W	84.25'
L4	S34°08'30"W	32.59'
L5	N88°24'50"W	19.38'
L6	N01°35'10"E	33.28'
L7	S10°56'39"W	48.19'
L8	S03°18'46"W	314.11'
L9	N55°06'25"W	2.48'
L10	N78°31'16"E	40.85'
L11	S03°41'54"W	10.17'
L12	N85°34'48"W	27.84'
L13	S03°17'19"W	20.08'
L14	S48°18'28"W	39.60'

RECEIVED

JAN 12 2015

- = STONE FND.
- = MON. FND.
- = I.P. FND.
- = I.P. SET
- = MAG. NAIL FND.
- = MAG. NAIL SET
- ▲ = R.R. SPK. FND.
- △ = R.R. SPK. SET
- ◆ = P.K. NAIL FND.

I.P. Set are 13/16" I.D. iron pipe with cap inscribed EMHT INC



BASIS OF BEARINGS:

The Bearings shown on this plat are based on the Ohio State Plane Coordinate System, South Zone, NAD83 (1986). Said bearings originated from a field traverse which was tied (referenced) to said coordinate system by GPS observations and observations of selected Franklin County Engineering Department monuments FRANK 85 and WEST 17. The portion of the centerline of Schrock Road, having a bearing of N78°31'16"E, is designated the "basis of bearing" for this survey.

SURVEY NOTE:

This survey was prepared using documents of record, prior plats of survey, and observed evidence located by an actual field survey.



By *J. M. Meyer*
Joshua M. Meyer
Professional Surveyor No. 8485

1-8-2015
Date

J:\20130183\DWG\04SHEETS\BOUNDARY\20130183-VS-BNDY-07.DWG plotted by MEYER, JOSH on 1/8/2015 1:49:15 PM last saved by MEYER, JOSH on 1/8/2015 1:48:23 PM
Xrefs: 20130183-VS-BNDY-CORD-E-01.DWG & 20130183-VS-REER-RWAY-E.DWG