



Evans, Mechwart, Hambleton & Tilton, Inc. Engineers • Surveyors • Planners • Scientists 5500 New Albany Road, Columbus, OH 43054 Phone: 614.775.4500 Toll Free: 888.775.3648 emht.com

# SURVEY OF ACREAGE PARCEL

QUARTER TOWNSHIP 2, TOWNSHIP 2, RANGE 17  
UNITED STATES MILITARY LANDS  
CITY OF WESTERVILLE, COUNTY OF FRANKLIN, STATE OF OHIO

Date: September 29, 2014

Job No. 2013-0183

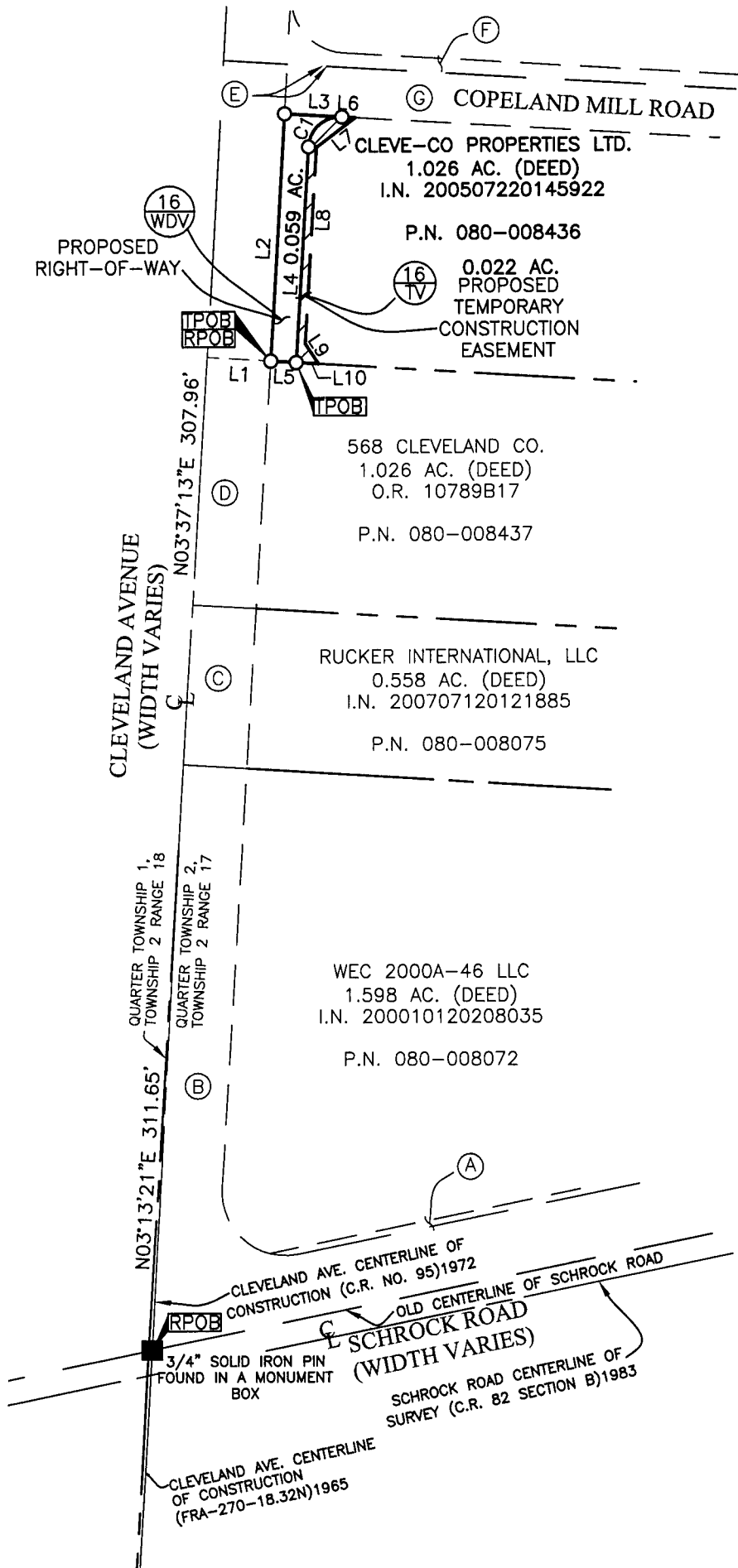
Scale: 1" = 100'

Revised: October 8, 2014

Revised: February 10, 2015

Curve Table					
Curve Number	Delta	Radius	Length	Chord Bearing	Chord Distance
C1	89°55'20"	20.00'	31.39'	S48°34'53"W	28.27'

Line Table		
Line Number	Direction	Length
L1	S86°22'47"E	40.00'
L2	N03°37'13"E	154.31'
L3	S86°27'27"E	35.97'
L4	S03°37'13"W	134.32'
L5	N86°30'46"W	16.00'
L6	S86°27'27"E	8.41'
L7	S53°03'52"W	30.78'
L8	S03°37'13"W	122.32'
L9	S33°19'00"E	14.98'
L10	N86°30'46"W	14.00'



### BASIS OF BEARINGS:

The Bearings shown on this plat are based on the Ohio State Plane Coordinate System, South Zone, NAD83 (1986). Said bearings originated from a field traverse which was tied (referenced) to said coordinate system by GPS observations and observations of selected Franklin County Engineering Department monuments FRANK 85 and WEST 17. The portion of the centerline of Schrock Road, having a bearing of N78°31'16"E, is designated the "basis of bearing" for this survey.

### SURVEY NOTE:

This survey was prepared using documents of record, prior plats of survey, and observed evidence located by an actual field survey.

- (A) FRANKLIN COUNTY COMMISSIONERS, FRANKLIN COUNTY, OHIO PARCEL 11WD 0.022 AC. (DEED) O.R. 6193D14
- (B) COUNTY OF FRANKLIN PARCEL NO. 1-WD 0.595 AC. (DEED) D.B. 3363, P. 690
- (C) FRANKLIN COUNTY PARCEL 2-WD 0.092 AC. (DEED) D.B. 3315, P. 368
- (D) COUNTY OF FRANKLIN PARCEL 4-WD 0.312 AC. (DEED) D.B. 3309, P. 334
- (E) CITY OF WESTERVILLE, OHIO 0.0005 AC. (DEED) O.R. 2233I03
- (F) CITY OF WESTERVILLE, OHIO 0.219 AC. (DEED) I.N. 200710110178669
- (G) CITY OF WESTERVILLE, OHIO 0.206 AC. (DEED) O.R. 2647J09

RECEIVED

FEB 11 2015



By *J.M.M.*  
Joshua M. Meyer  
Professional Surveyor No. 8485

2-10-2015  
Date

- = STONE FND.
- = MON. FND.
- = I.P. FND.
- = I.P. SET
- = MAG. NAIL FND.
- = MAG. NAIL SET
- ▲ = R.R. SPK. FND.
- △ = R.R. SPK. SET
- ◆ = P.K. NAIL FND.

I.P. Set are 13/16" I.D. iron pipe with cap inscribed EMHT INC

