



Evans, Mechwart, Hambleton & Tilton, Inc.  
Engineers • Surveyors • Planners • Scientists  
5500 New Albany Road, Columbus, OH 43054  
Phone: 614.775.4500 Toll Free: 888.775.3648  
emht.com

# SURVEY OF ACREAGE PARCEL

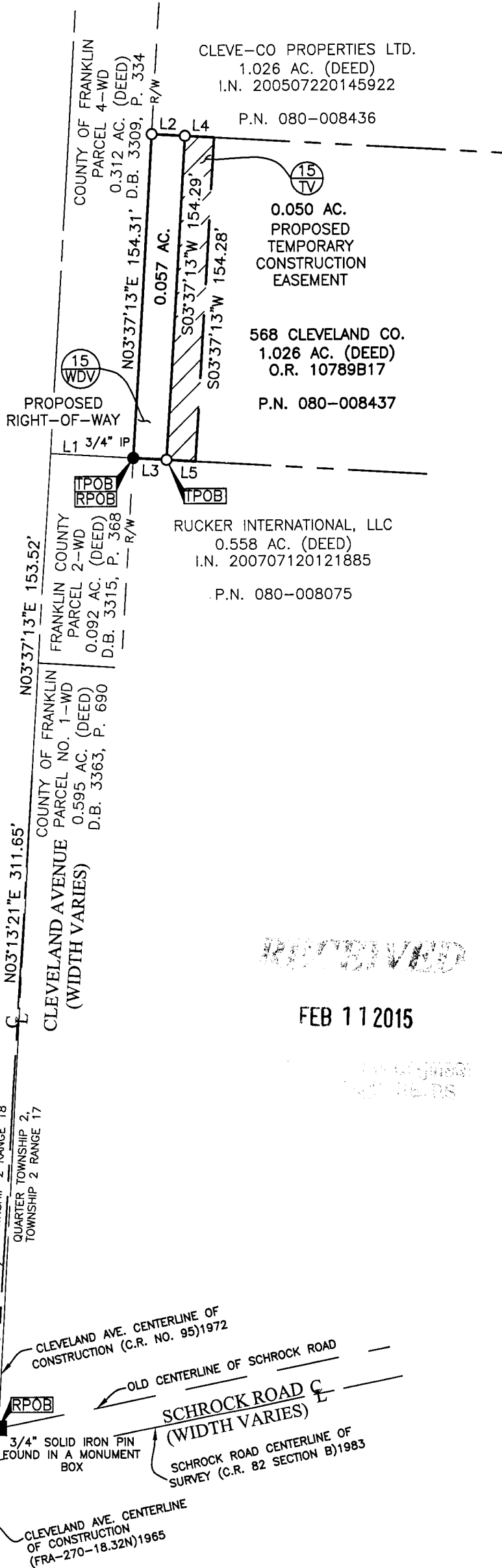
QUARTER TOWNSHIP 2, TOWNSHIP 2, RANGE 17  
UNITED STATES MILITARY LANDS  
CITY OF WESTERVILLE, COUNTY OF FRANKLIN, STATE OF OHIO

Date: September 29, 2014

Job No. 2013-0183

Scale: 1" = 60'

Revised: October 8, 2014  
Revised: February 10, 2015



### BASIS OF BEARINGS:

The Bearings shown on this plat are based on the Ohio State Plane Coordinate System, South Zone, NAD83 (1986). Said bearings originated from a field traverse which was tied (referenced) to said coordinate system by GPS observations and observations of selected Franklin County Engineering Department monuments FRANK 85 and WEST 17. The portion of the centerline of Schrock Road, having a bearing of N78°31'16"E, is designated the "basis of bearing" for this survey.

### SURVEY NOTE:

This survey was prepared using documents of record, prior plats of survey, and observed evidence located by an actual field survey.

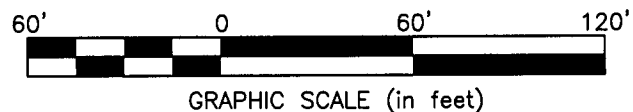
Line Table		
Line Number	Direction	Length
L1	S86°34'10"E	40.00'
L2	S86°30'46"E	16.00'
L3	N86°34'10"W	16.00'
L4	S86°30'46"E	14.00'
L5	N86°34'10"W	14.00'

RECEIVED

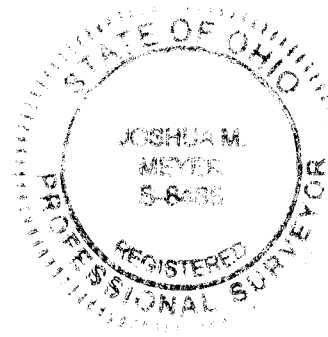
FEB 11 2015

- = STONE FND.
- = MON. FND.
- = I.P. FND.
- = I.P. SET
- = MAG. NAIL FND.
- = MAG. NAIL SET
- ▲ = R.R. SPK. FND.
- △ = R.R. SPK. SET
- = P.K. NAIL FND.

I.P. Set are 13/16" I.D. iron pipe with cap inscribed EMHT INC



GRAPHIC SCALE (in feet)



By Joshua M. Meyer  
Professional Surveyor No. 8485

Date 2-10-2015