



Evans, Mechwart, Hambleton & Tilton, Inc.  
 Engineers • Surveyors • Planners • Scientists  
 5500 New Albany Road, Columbus, OH 43054  
 Phone: 614.775.4500 Toll Free: 888.775.3648

emht.com

# SURVEY OF ACREAGE PARCEL

## QUARTER TOWNSHIP 2, TOWNSHIP 2, RANGE 17

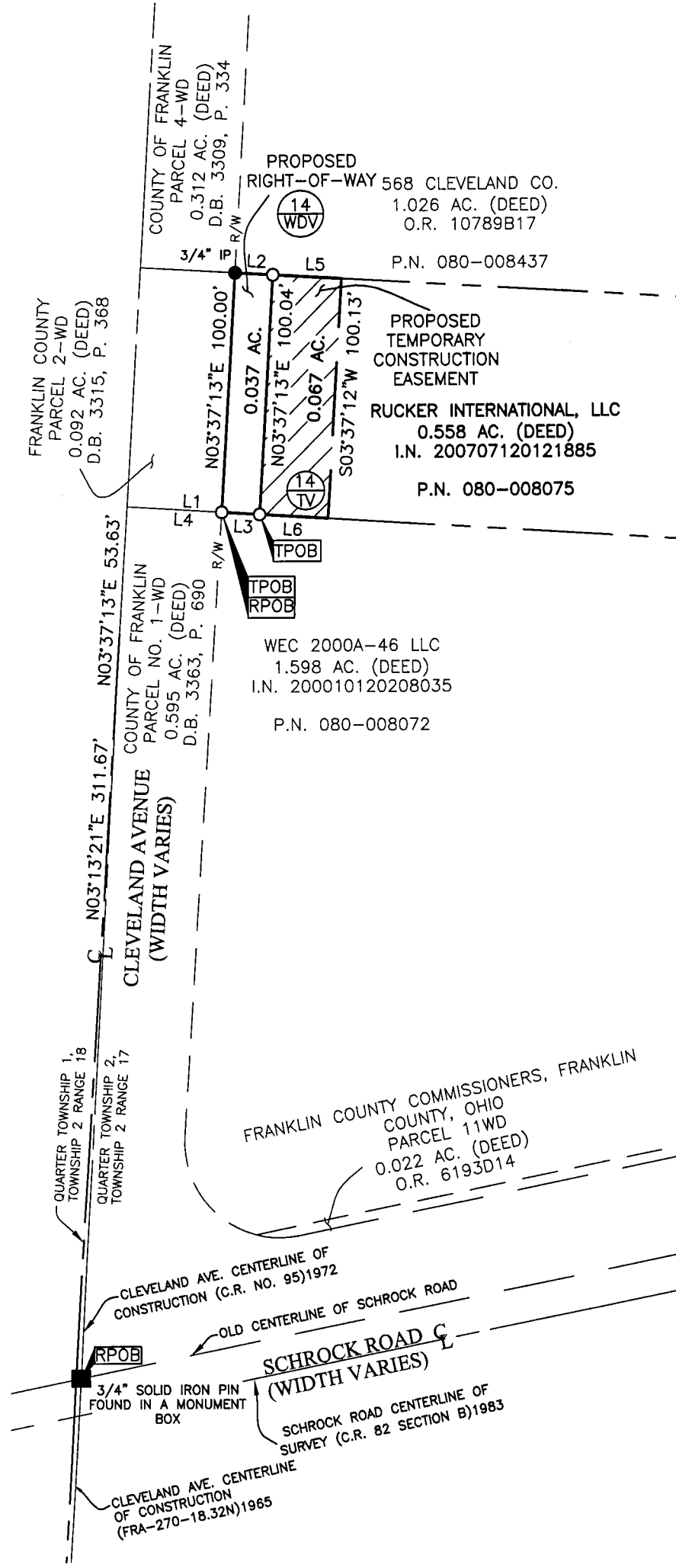
### UNITED STATES MILITARY LANDS

### CITY OF WESTERVILLE, COUNTY OF FRANKLIN, STATE OF OHIO

Date: September 29, 2014

Job No. 2013-0183

Scale: 1" = 60'



**BASIS OF BEARINGS:**

The Bearings shown on this plat are based on the Ohio State Plane Coordinate System, South Zone, NAD83 (1986). Said bearings originated from a filed traverse which was tied (referenced) to said coordinate system by GPS observations and observations of selected Franklin County Engineering Department monuments FRANK 85 and WEST 17. The portion of the centerline of Schrock Road, having a bearing of N78°31'16"E, is designated the "basis of bearing" for this survey.

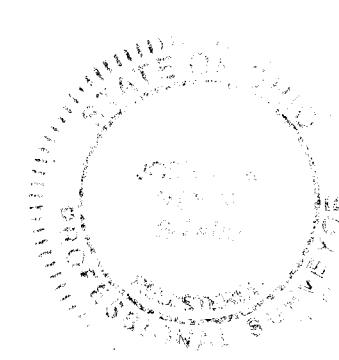
**SURVEY NOTE:**

This survey was prepared using documents of record, prior plats of survey, and observed evidence located by an actual field survey.

Line Table		
Line Number	Direction	Length
L1	S86°24'30"E	40.00'
L2	S86°34'10"E	16.00'
L3	S86°24'30"E	16.00'
L4	S86°24'30"E	56.00'
L5	S86°34'10"E	29.00'
L6	N86°24'30"W	29.00'

RECORDED

FEB 06 2015



- = STONE FND.
- = MON. FND.
- = I.P. FND.
- = I.P. SET
- ◆ = MAG. NAIL FND.
- = MAG. NAIL SET
- ▲ = R.R. SPK. FND.
- △ = R.R. SPK. SET
- ◆ = P.K. NAIL FND.

I.P. Set are 13/16" I.D. iron pipe with cap inscribed EMHT INC



GRAPHIC SCALE (in feet)

By Joshua M. Meyer  
 Professional Surveyor No. 8485

2-3-2015  
 Date

J:\20130183\DWG\04SHEETS\BOUNDARY\20130183-VS-BNDY-14.DWG plotted by KING, BRANDON on 9/30/2014 11:21:07 AM last saved by KING, BRANDON on 9/29/2014 9:09:01 AM  
 Xrefs: 20130183-VS-BNDY-CORD-E-01.DWG & 20130183-CS-BEER-RWAY-E.DWG