



Evans, Mechwart, Hambleton & Tilton, Inc.
 Engineers • Surveyors • Planners • Scientists
 5500 New Albany Road, Columbus, OH 43054
 Phone: 614.775.4500 Toll Free: 888.775.3648
 emht.com

SURVEY OF ACREAGE PARCEL

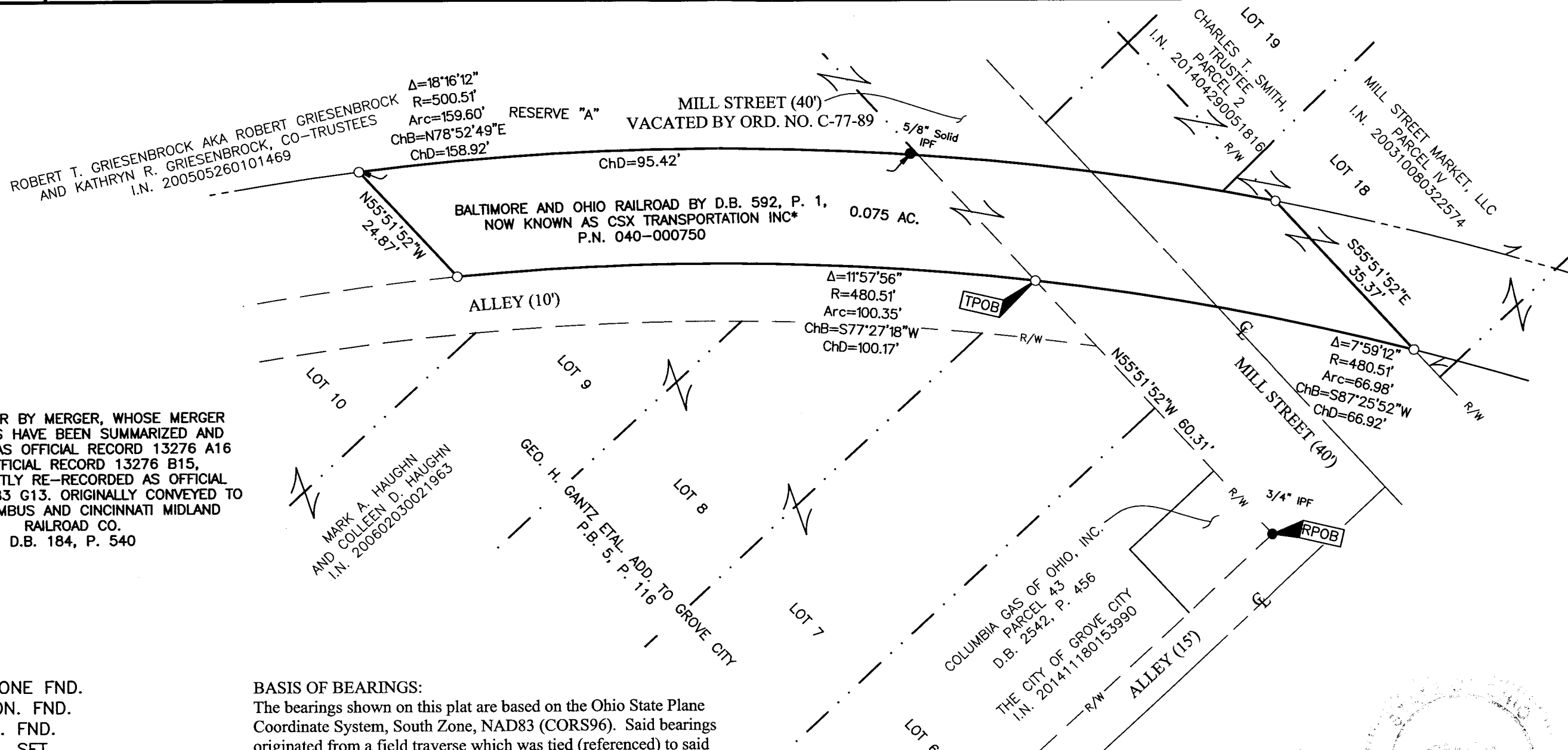
VIRGINIA MILITARY SURVEY NO. 1388

CITY OF GROVE CITY, COUNTY OF FRANKLIN, STATE OF OHIO

Date: January 14, 2015

Scale: 1" = 20'

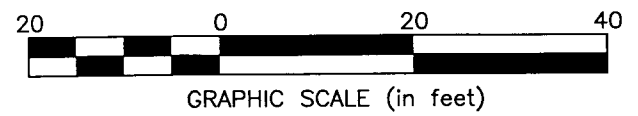
Job No: 2014-1510



*SUCCESSOR BY MERGER, WHOSE MERGER DOCUMENTS HAVE BEEN SUMMARIZED AND RECORDED AS OFFICIAL RECORD 13276 A16 AND OFFICIAL RECORD 13276 B15, SUBSEQUENTLY RE-RECORDED AS OFFICIAL RECORD 13283 G13. ORIGINALLY CONVEYED TO THE COLUMBUS AND CINCINNATI MIDLAND RAILROAD CO. D.B. 184, P. 540

- = STONE FND.
- = MON. FND.
- = I.P. FND.
- = I.P. SET
- = MAG. NAIL FND.
- = MAG. NAIL SET
- ▲ = R.R. SPK. FND.
- △ = R.R. SPK. SET
- ◆ = P.K. NAIL FND.

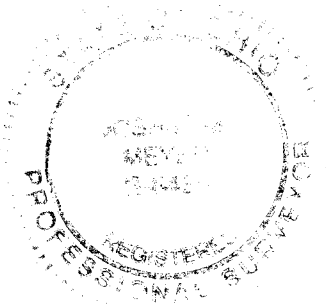
I.P. Set are 13/16" I.D. iron pipe with cap inscribed EMHT INC



BASIS OF BEARINGS:
 The bearings shown on this plat are based on the Ohio State Plane Coordinate System, South Zone, NAD83 (CORS96). Said bearings originated from a field traverse which was tied (referenced) to said coordinate system by GPS observations and observations of selected CORS base stations in the National Spatial Reference System. The portion of the southerly right-of-way line of Mill Street, having a bearing of South 55° 51' 52" East, is designated the "basis of bearing" for this survey.

SURVEY NOTE:
 This survey was prepared using documents of record, prior plats of survey, and observed evidence located by an actual field survey in May 2002, June 2010, October 2013, and September 2014.

JAN 16 2015



By Joshua M. Meyer Date 1-14-2015
 Joshua M. Meyer
 Professional Surveyor No. 8485

J:\20141510\DWG\04SHEETS\BOUNDARY\20141510-VS-BNDY-13.DWG plotted by KING, BRANDON on 1/14/2015 1:43:12 PM last saved by BKING on 1/14/2015 8:21:12 AM