

PROJ. NO: 2007.00175

DRAWN BY: BPB

CHECKED BY: MTL

PAGE 1 OF 1



AMERICAN
STRUCTUREPOINT
INC.

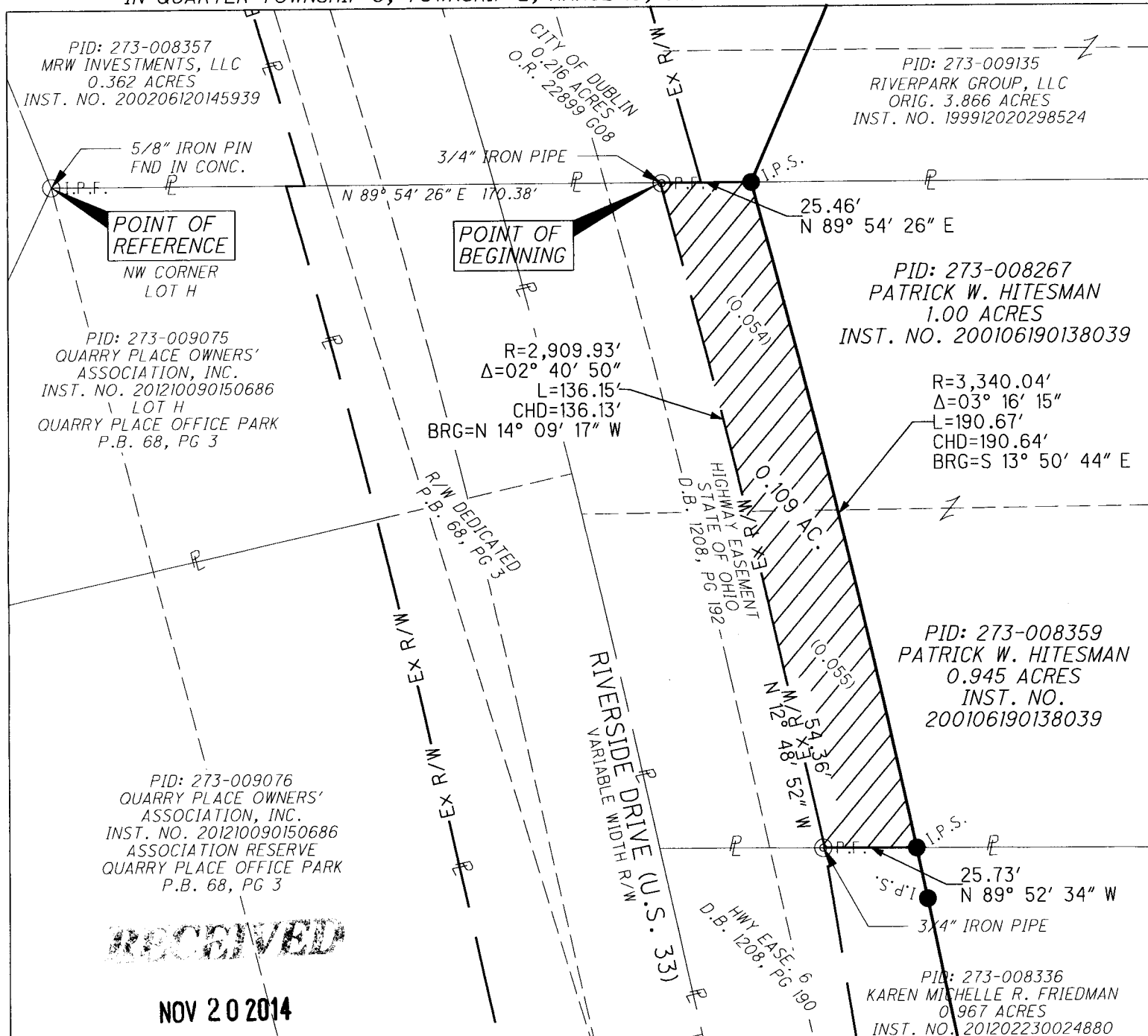
2550 CORPORATE EXCHANGE DR, STE 300
COLUMBUS, OH 43231
TEL 614.901.2235 FAX 614.901.2236
www.structurepoint.com

EXHIBIT "B"

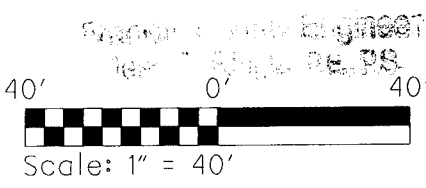
0.109 ACRES
BIKE PATH EASEMENT
ACQUIRED FROM
PATRICK W. HITESMAN

DUBLIN, OHIO

SITUATED IN THE STATE OF OHIO, COUNTY OF FRANKLIN, CITY OF DUBLIN, LOCATED
IN QUARTER TOWNSHIP 3, TOWNSHIP 2, RANGE 19, UNITED STATES MILITARY LANDS.



RECEIVED
NOV 20 2014



- LEGEND**
- I.P.F. IRON PIN FOUND
 - ⊙ P.F. IRON PIPE FOUND
 - I.P.S. 5/8" IRON PIN SET WITH CAP "STRUCTUREPOINT-PS 8438"

BASIS OF BEARING:

THE BEARINGS HEREIN ARE BASED ON THE OHIO STATE PLANE COORDINATE SYSTEM SOUTH ZONE AS PER NAD 83 (1986 ADJUSTMENT). CONTROL FOR BEARINGS WAS FROM COORDINATES OF MONUMENTS FRANK 73 AND FRANK 74, HAVING A BEARING OF SOUTH 73° 57' 18" EAST, ESTABLISHED BY THE FRANKLIN COUNTY ENGINEERING DEPARTMENT, USING GLOBAL POSITIONING SYSTEM PROCEDURES AND EQUIPMENT.

I HEREBY CERTIFY THAT:
THIS DRAWING REPRESENTS THE RESULTS OF AN ACTUAL FIELD SURVEY OF THE PREMISES PERFORMED BY AMERICAN STRUCTUREPOINT, INC. IN MARCH-APRIL OF 2013. THIS DRAWING IS CORRECT TO THE BEST OF MY KNOWLEDGE AND BELIEF.

Brian P. Bingham
BRIAN P. BINGHAM, P.S. NO. 8438
AMERICAN STRUCTUREPOINT, INC.

11/20/2014
DATE

