

PROJ. NO: 2007.00175

DRAWN BY: BPB

CHECKED BY: MTL

PAGE 1 OF 1

RECEIVED

NOV 20 2014



AMERICAN STRUCTUREPOINT INC.

2550 CORPORATE EXCHANGE DR, STE 300 COLUMBUS, OH 43231 TEL 614.901.2235 FAX 614.901.2236 www.structurepoint.com

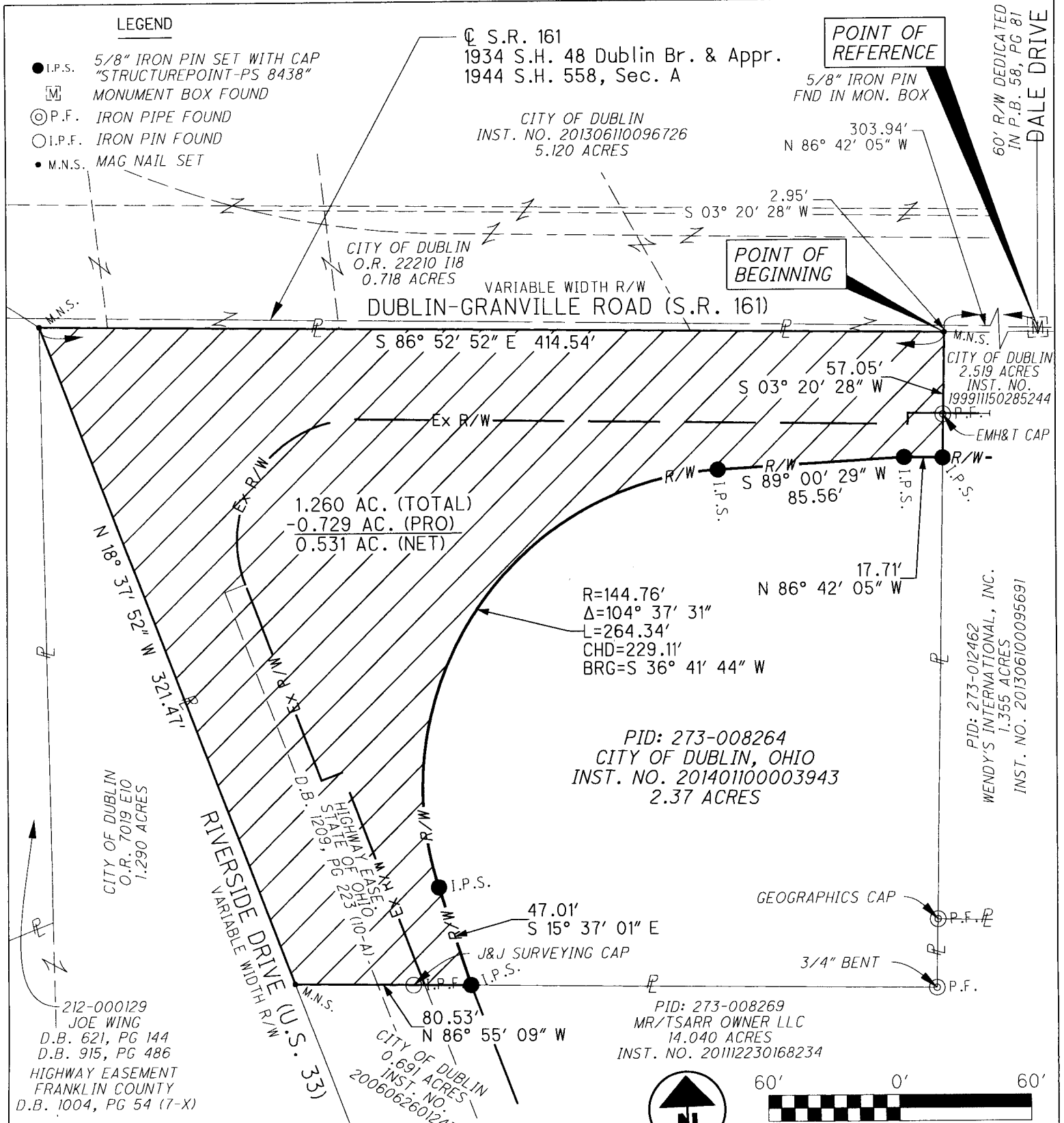
A-3-F

EXHIBIT "B"

1.260 ACRES RIGHT-OF-WAY ACQUIRED FROM CITY OF DUBLIN

DUBLIN, OHIO

SITUATED IN THE STATE OF OHIO, COUNTY OF FRANKLIN, CITY OF DUBLIN, LOCATED IN QUARTER TOWNSHIP 3, TOWNSHIP 2, RANGE 19, UNITED STATES MILITARY LANDS.



BASIS OF BEARING:

THE BEARINGS HEREIN ARE BASED ON THE OHIO STATE PLANE COORDINATE SYSTEM SOUTH ZONE AS PER NAD 83 (1986 ADJUSTMENT). CONTROL FOR BEARINGS WAS FROM COORDINATES OF MONUMENTS FRANK 73 AND FRANK 74, HAVING A BEARING OF SOUTH 73° 57' 18" EAST, ESTABLISHED BY THE FRANKLIN COUNTY ENGINEERING DEPARTMENT, USING GLOBAL POSITIONING SYSTEM PROCEDURES AND EQUIPMENT.

I HEREBY CERTIFY THAT: THIS DRAWING REPRESENTS THE RESULTS OF AN ACTUAL FIELD SURVEY OF THE PREMISES PERFORMED BY AMERICAN STRUCTUREPOINT, INC. IN MARCH-APRIL OF 2013. THIS DRAWING IS CORRECT TO THE BEST OF MY KNOWLEDGE AND BELIEF.

Brian P. Bingham, P.S. No. 8438 American Structurepoint, Inc.

11/20/2014 DATE

