

F-8-E



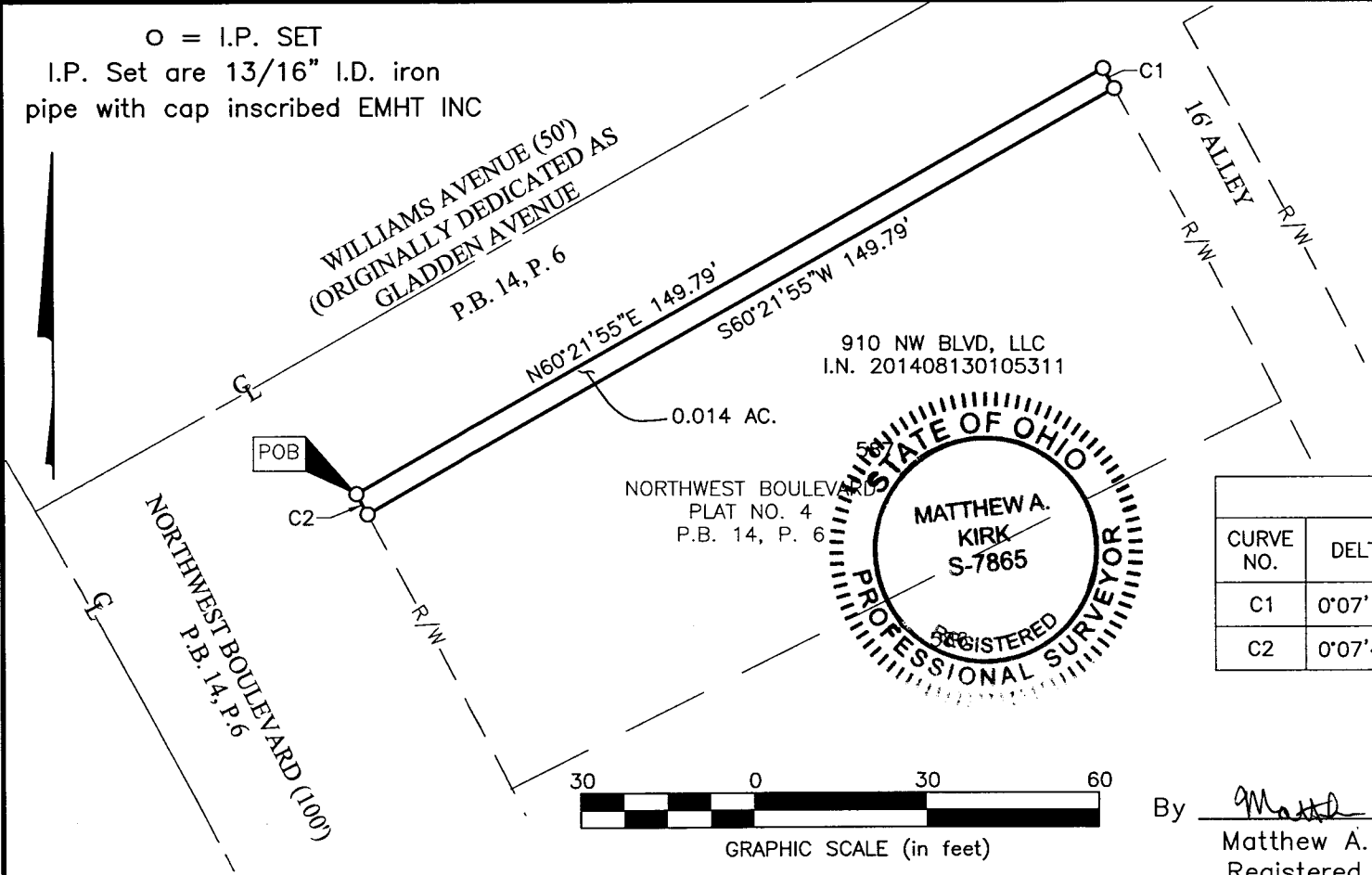
Evans, Mechwart, Hambleton & Tilton, Inc.  
 Engineers • Surveyors • Planners • Scientists  
 5500 New Albany Road, Columbus, OH 43054  
 Phone: 614.775.4500 Toll Free: 888.775.3648  
 emht.com

# SURVEY OF ACREAGE PARCEL

SECTION 7, TOWNSHIP 5, RANGE 22  
 REFUGEE LANDS  
 CITY OF GRANDVIEW HEIGHTS, COUNTY OF FRANKLIN, STATE OF OHIO

Date: December 29, 2014  
 Scale: 1" = 30'  
 Job No. 2014-0258

○ = I.P. SET  
 I.P. Set are 13/16" I.D. iron pipe with cap inscribed EMHT INC



**SURVEY NOTE:**  
 This survey was prepared using documents of record, prior plats of survey, and observed evidence located by an actual field survey.

**BASIS OF BEARINGS:**  
 The bearings shown hereon are based on the Ohio State Plane Coordinate System, South Zone as per NAD83 (1986 adjustment). Control for the bearings was from coordinates of monuments 5-83 and 4-83, having a bearing of North 00° 22' 10" West, for a portion of the west limited access right-of-way of Olentangy River Road, established by the Franklin County Engineering Department using Global Positioning System procedures and equipment.



CURVE TABLE					
CURVE NO.	DELTA	RADIUS	LENGTH	CHORD BEARING	CHORD DISTANCE
C1	0°07'10"	1920.00'	4.00'	S 28°46'03" E	4.00'
C2	0°07'46"	1770.00'	4.00'	N 28°44'20" W	4.00'



By Matthew A. Kirk 29 Dec 14  
 Matthew A. Kirk  
 Registered Surveyor No. 7865

J:\20140258\DWG\04SHEETS\BOUNDARY\20140258-VS-BNDY-ROW4.DWG plotted by KIRK, MATTHEW on 12/29/2014 8:01:21 AM last saved by MKIRK on 12/29/2014 8:00:58 AM  
 Xrefs:

**RECEIVED**

JAN 07 2015

Franklin County Engineer  
 Dean C. Rindler, P.E., P.S.