



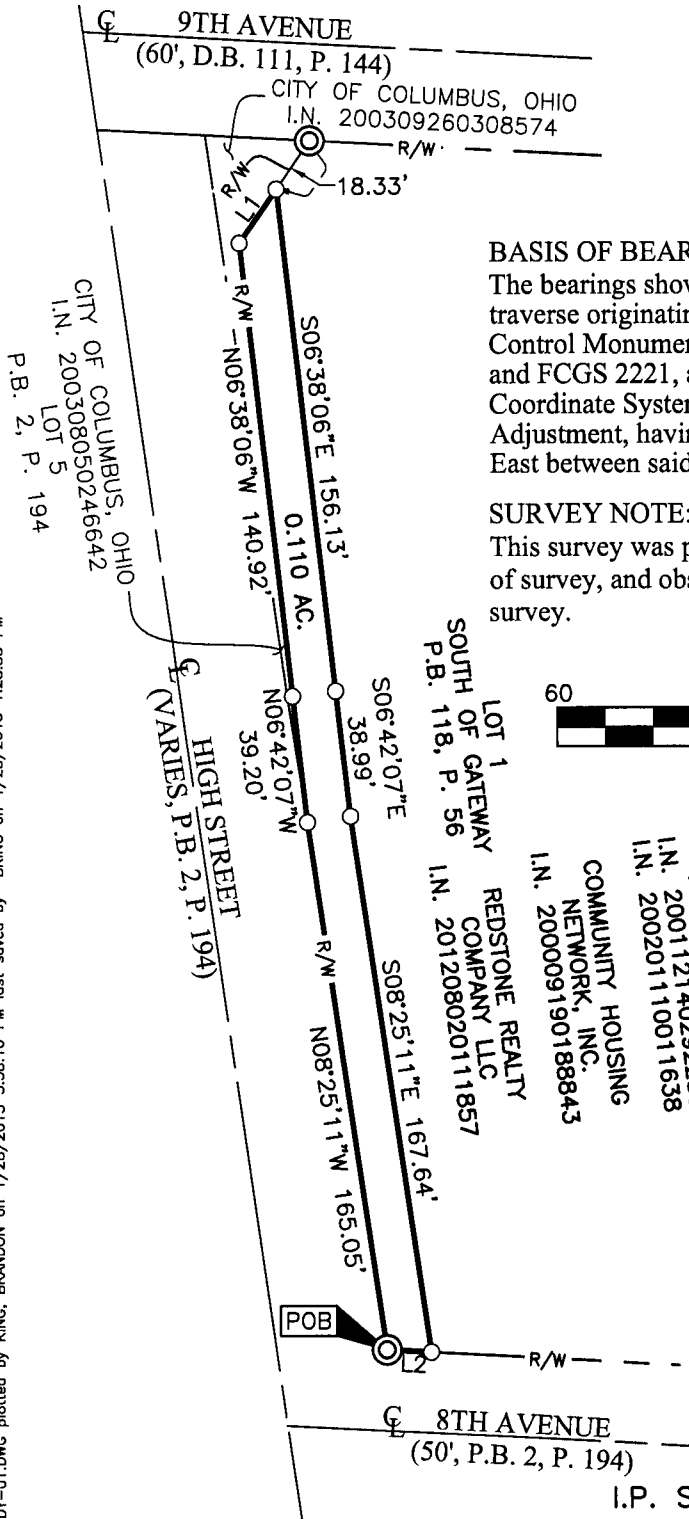
Evans, Mechwart, Hambleton & Tilton, Inc.
 Engineers • Surveyors • Planners • Scientists
 5500 New Albany Road, Columbus, OH 43054
 Phone: 614.775.4500 Toll Free: 888.775.3648
 emht.com

SURVEY OF ACREAGE PARCEL
 QUARTER TOWNSHIP 3, TOWNSHIP 1, RANGE 18
 UNITED STATES MILITARY LANDS
 CITY OF COLUMBUS, COUNTY OF FRANKLIN, STATE OF OHIO

Date: January 28, 2015

Job No. 2014-1770

Scale: 1" = 60'



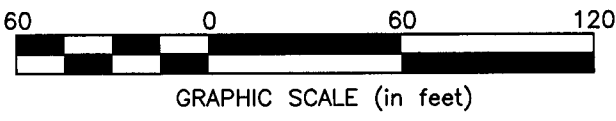
LINE TABLE		
LINE	BEARING	DISTANCE
L1	N35°01'03"E	20.36'
L2	N86°47'09"W	13.82'

BASIS OF BEARINGS:

The bearings shown hereon were transferred from a field traverse originating from and tying to Franklin County Survey Control Monuments, including monument numbers FCGS 8876 and FCGS 2221, and are based on the Ohio State Plane Coordinate System, South Zone as per NAD 83, 1986 Adjustment, having a calculated bearing of North 88° 53' 20" East between said monuments.

SURVEY NOTE:

This survey was prepared using documents of record, prior plats of survey, and observed evidence located by an actual field survey.



RECEIVED

JAN 29 2015

Franklin County Engineer
 Dept. of Public Works

- = STONE FND.
- = MON. FND.
- = I.P. FND.
- = I.P. SET
- = MAG. NAIL FND.
- = MAG. NAIL SET
- ▲ = R.R. SPK. FND.
- △ = R.R. SPK. SET
- = P.K. NAIL FND.
- ◎ = PERM. MRKR. SET

I.P. Set are 13/16" I.D. iron pipe with cap inscribed EMHT INC. Permanent Marker set is a one-inch solid iron pin capped with an aluminum cap stamped EMHT INC.



By Matthew A. Kirk
 Matthew A. Kirk
 Professional Surveyor No. 7865

28 JAN 15
 Date

J:\2014\1770\DWG\SHEETS\BOUNDARY\20141770-VS-BNDY-01.DWG plotted by KING, BRANDON on 1/28/2015 3:58:10 PM last saved by KING, BRANDON on 1/28/2015 1:28:33 PM Xrefs: